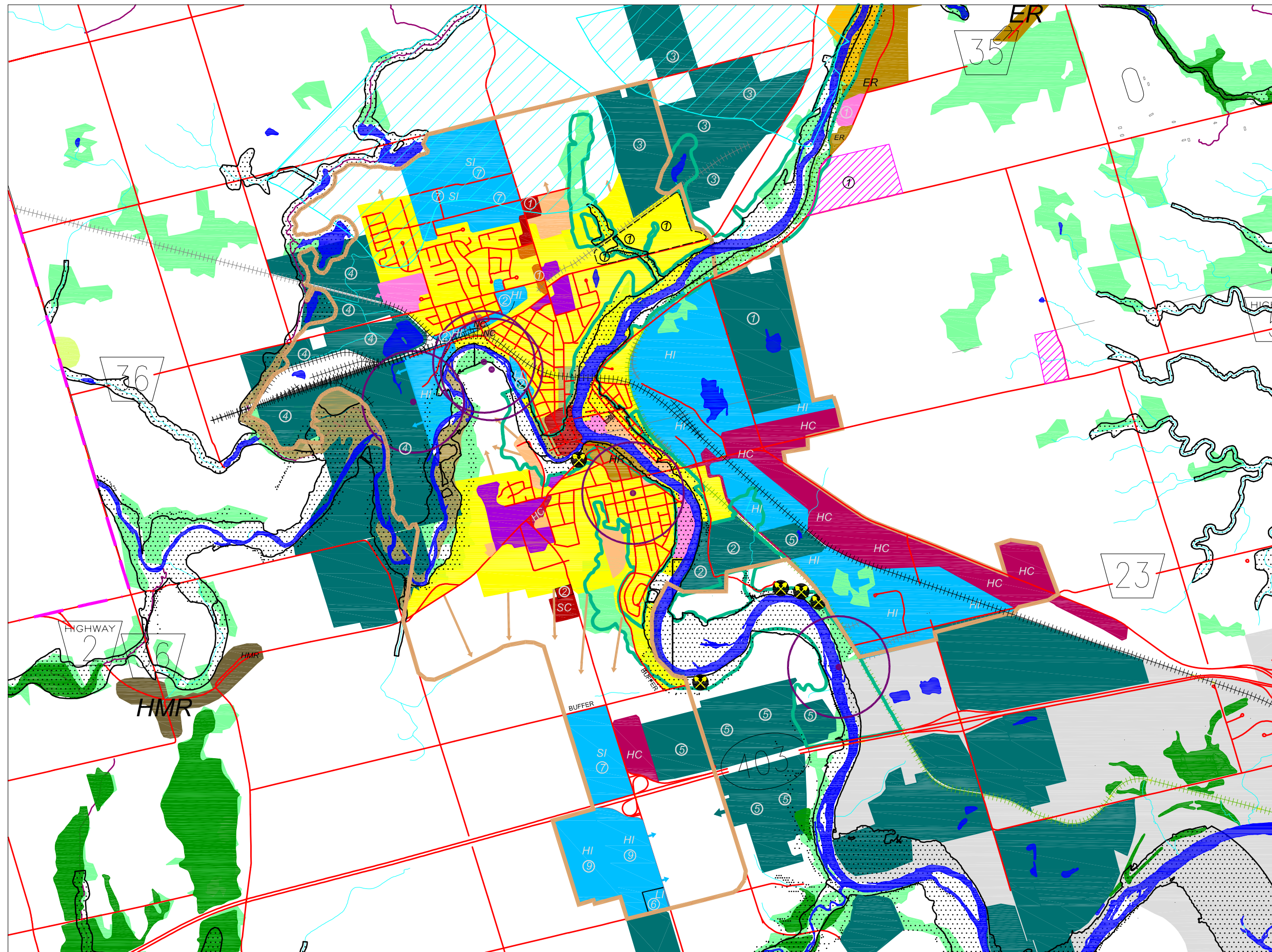


**COUNTY OF BRANT**  
**OFFICIAL PLAN**  
**SCHEDULE 'B-1A' and 'B-1B'**  
**LAND USE PLAN**

**LEGEND**

- AGRICULTURAL
- NATURAL ENVIRONMENT**
- LOCALLY SIGNIFICANT WETLANDS
- PROVINCIALLY SIGNIFICANT LIFE SCIENCE ANSI
- REGIONALLY SIGNIFICANT LIFE SCIENCE ANSI
- PROVINCIALLY SIGNIFICANT EARTH SCIENCE ANSI
- FLOOD PRONE AREA AND STEEP SLOPE AREA
- FLOOD LINES
- FILL LINE
- NATURAL ENVIRONMENT INCLUDES**
- WETLANDS (Provincially Significant)
- WOODLANDS
- EXTRACTIVE INDUSTRIAL
- LOW DENSITY RESIDENTIAL
- MEDIUM DENSITY RESIDENTIAL
- HIGH DENSITY RESIDENTIAL
- OFFICE RESIDENTIAL
- HERITAGE RESIDENTIAL
- HAMLET RESIDENTIAL
- ESTATE RESIDENTIAL
- MODULAR HOME PARK
- RECREATIONAL TRAILER PARK
- NEIGHBOURHOOD COMMERCIAL
- HIGHWAY COMMERCIAL
- SHOPPING CENTRE COMMERCIAL
- GENERAL COMMERCIAL
- LIGHT INDUSTRIAL
- SPECIAL INDUSTRIAL
- HEAVY INDUSTRIAL
- INSTITUTIONAL
- RECREATIONAL
- WELL HEAD PROTECTION AREA (WHPA)
- AREA'S EXCLUDED FROM PLAN
- LAKES, RIVERS, RESERVOIRS
- SETTLEMENT BOUNDARY
- FUTURE GROWTH DIRECTION
- SPECIAL POLICIES
- TRAIL
- NOISE EXPOSURE FORECAST CONTOUR
- COLD WATER RIVERS AND STREAMS
- WARM/MIXED WATER RIVERS AND STREAMS
- RAILWAY LINE
- ABANDONED RAILWAY LINE
- FORMER MINERAL MINING AREAS
- LANDFILL SITES 500m RADII
- SEWAGE TREATMENT PLANTS 150m RADII



**PARIS SETTLEMENT AREA**

**NOTES:**

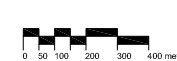
Schedule 'A' should be read in conjunction with Schedules 'B-1A' through 'B-12', Schedule 'C', Schedule 'D' and the text of the Official Plan.

Schedules 'B-1A' through 'B-12' are details of the Schedule 'A' Land Use Plan and are delineated accordingly.

Produced by Monteith Planning Consultants under Licence with the Ministry of Natural Resources ©Queen's Printer for Ontario, 2000

This product has been created using data owned by the Longpoint Region Conservation Authority

This product has been created using copyright data owned by the Grand River Conservation Authority. The data is being used under licence by Monteith Planning Consultants.



updated to September 2011

Prepared By:

**Monteith Planning Consultants**  
 URBAN & REGIONAL PLANNERS