

# WELCOME

## Tutela Heights Road Slope Stability Municipal Class Environmental Assessment

Public Information Centre No. 1

Mount Pleasant Community Centre

October 14, 2015

4:30 – 7:30 p.m.

**PLEASE SIGN IN AND TAKE A COMMENT SHEET**

# The Purpose of this Information Centre

- Provide information on Project purpose and background
- Describe the process that will be followed
- Indicate Environmental Assessment activities now in progress
- Provide an opportunity for your input

## NOTICE OF STUDY OF COMMENCEMENT

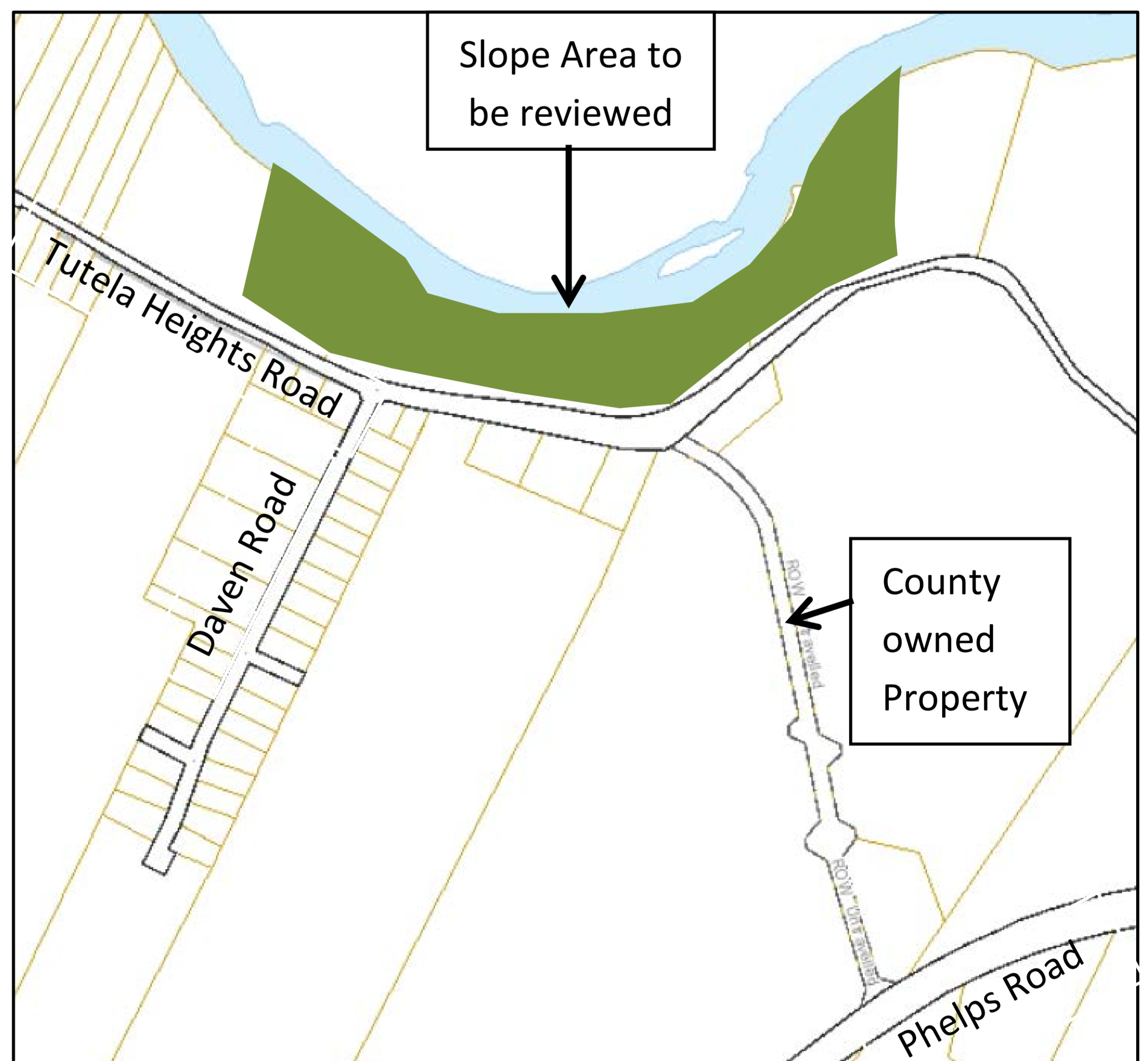
### TUTELA HEIGHTS ROAD SLOPE STABILITY MUNICIPAL CLASS ENVIRONMENTAL ASSESSMENT

The County of Brant, through their consultant Parsons Inc., has initiated a Municipal Class Environmental Assessment to review the slope stability along a section of Tutela Heights Road.

The section of slope along Tutela Heights Road being studied extends easterly from the Bell Homestead Historical Site for approximately one kilometre, as shown in the Key Map below.

#### The Process

The Study is being undertaken as a Schedule “C” in accordance with the requirements of the Municipal Class Environmental Assessment (Class EA) process. The Class EA process includes public and review agency consultation, evaluation of alternatives, impact assessment of proposed alternatives, and identification of measures to mitigate adverse impacts. Study updates including the Notice of Completion of the study will be provided to all stakeholders who express interest in the project as a result of the Notice of Commencement and/or through participation in the public consultation process.



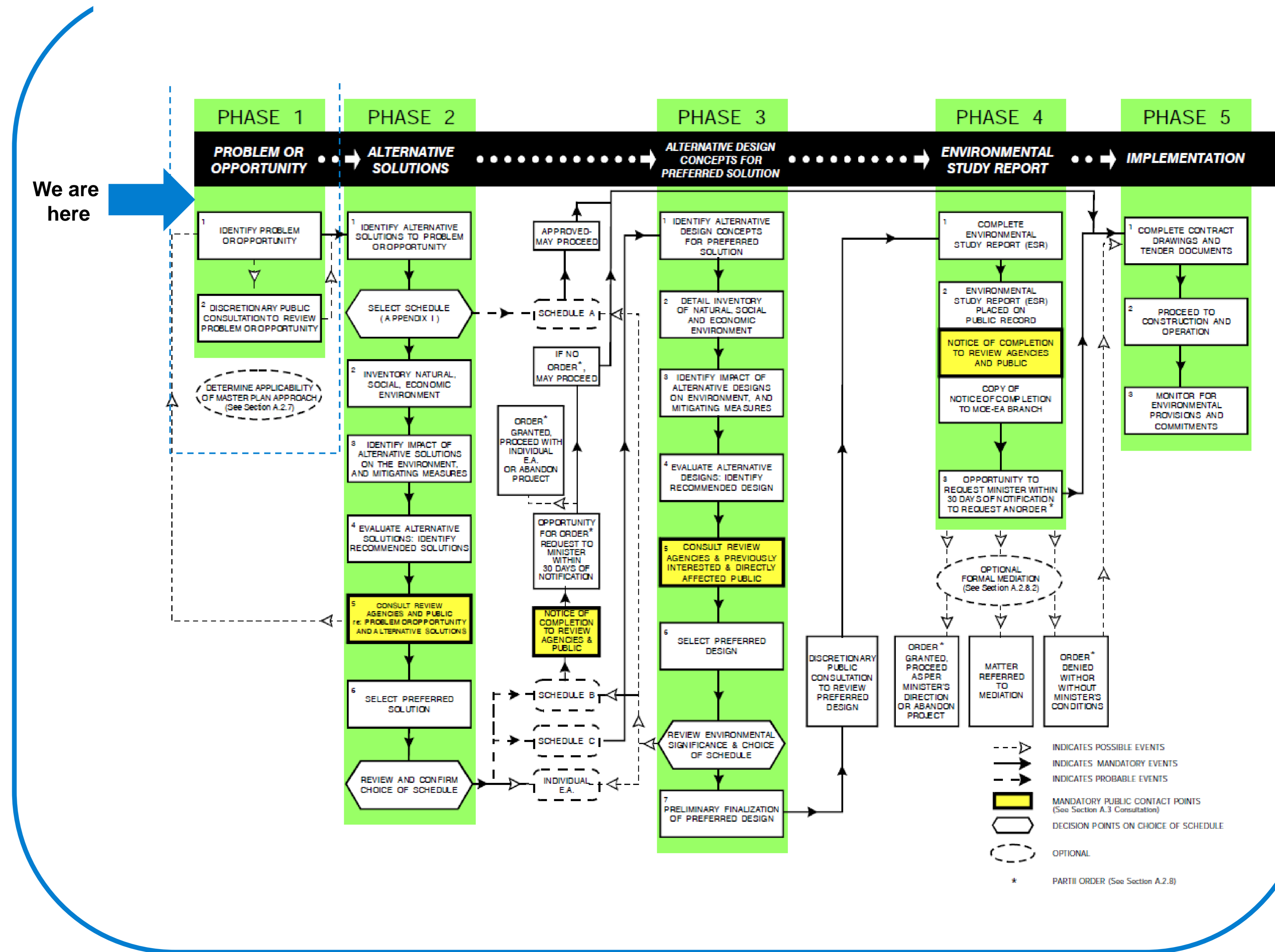
#### Public Consultation

The County wishes to ensure that those interested in this study have the opportunity to be involved and to provide input. Three Public Information Centres (PICs) will be held during the study to provide information and receive feedback from the public. A fourth PIC will be held after the completion of the study during the 30-day Environmental Study Report (ESR) review period mandated by the Class EA process. Notices for the project will be posted on the County Website at <http://www.brant.ca/en/explore-our-services/Public-Works-Notices.asp> under “Environmental Assessment”.

- ❑ The 'Slope Area' north of Tutela Heights Road from the Bell Homestead Property to 1 km east has historically experienced slope failures
- ❑ Slope stabilization measures were undertaken in 1973 by the Grand River Conservation Authority (GRCA)
- ❑ In May 2013 the geotechnical firm LVM undertook inspection and assessment of the 'Slope Area'. As a result of the findings the Grand Valley Trail Association installed additional trail signage and relocated a portion of their trail away from eroded section of the slope.
- ❑ Investigations in 2014 and 2015 have confirmed that sections of the 'Slope Area' continue to be unstable



- Formal planning process approved under the **Ontario Environmental Assessment (EA) Act** that must be undertaken in advance of road, water and wastewater construction projects
- Ensures that all **reasonable alternatives** are considered and that a selected alternative would have **minimal impact on the surrounding environment**
- The Municipal Class EA process provides opportunities for public/stakeholder involvement throughout the project
- The Tutela Heights Road Slope Stabilization EA study is being undertaken as a **“Schedule C”** Class EA project



- ❑ The Class EA process for Slope Stabilization involves the determination of the Erosion Hazard Limit (EHL) for the Slope Area
- ❑ Erosion Hazard Limit (EHL) is the limit (setback from the Grand River) within which it would be unsafe to allow development, infrastructure, or site alteration activities
- ❑ EHL is determined using information on the historical erosion rate of the river, an allowance for slope stability, and an allowance for future erosion
- ❑ EHL for the Tutela Heights Road Slope Area will be determined through Geotechnical and Geomorphic Assessments

- ❑ Geotechnical Investigation – *to analyze slope stability*
- ❑ Geomorphic Assessment – *to determine the river erosion rate*
- ❑ Natural Heritage Assessment – *to determine potential impacts on the natural environment*
- ❑ Stage 1 Archaeological Assessment – *to determine potential impacts on areas of archaeological and/or cultural significance*
- ❑ Social Assessment – *to determine impacts on surrounding communities*
- ❑ Economic/Financial Assessment - *to determine cost/life cycle impacts*

- ❑ Summarize Description of Existing Conditions
- ❑ Determine 'Erosion Hazard Limit' (EHL) based on Geotechnical / Geomorphic Assessments
- ❑ Assess the Implications for Tutela Heights Road
- ❑ Prepare "Problem Statement" for the Municipal Class Environmental Assessment Study
- ❑ Public Information Centre #2
  - Present Existing Conditions
  - Present the Erosion Hazard Limit for the Tutela Heights Road Slope Area
  - Present Problem Statement
  - Present Alternative Solutions
  - Receive public input on the proposed Alternative Solutions





Please complete a Comment Sheet and leave it here today, or return it to Rajan Philips by Friday, October 30, 2015

Should you have any questions or concerns at any time during the project, please contact either of the following:

Rajan Philips, P. Eng.  
Project Manager  
Parsons Inc.  
540 Bingemans Centre Drive  
Suite 101  
Kitchener, Ontario N2B 3X9  
Tel: 519-744-4509  
Fax: 519-744-2822  
Email: [rajan.philips@parsons.com](mailto:rajan.philips@parsons.com)

Matthew D'Hondt, P. Eng.  
Solid Waste/Wastewater Operations Manager  
Corporation of the County of Brant  
Public Works Department  
26 Park Avenue, PO Box 160  
Burford, Ontario N0E 1A0  
Tel: 519-449-2451  
Fax: 519-449-3382  
Email: [matt.dhondt@brant.ca](mailto:matt.dhondt@brant.ca)