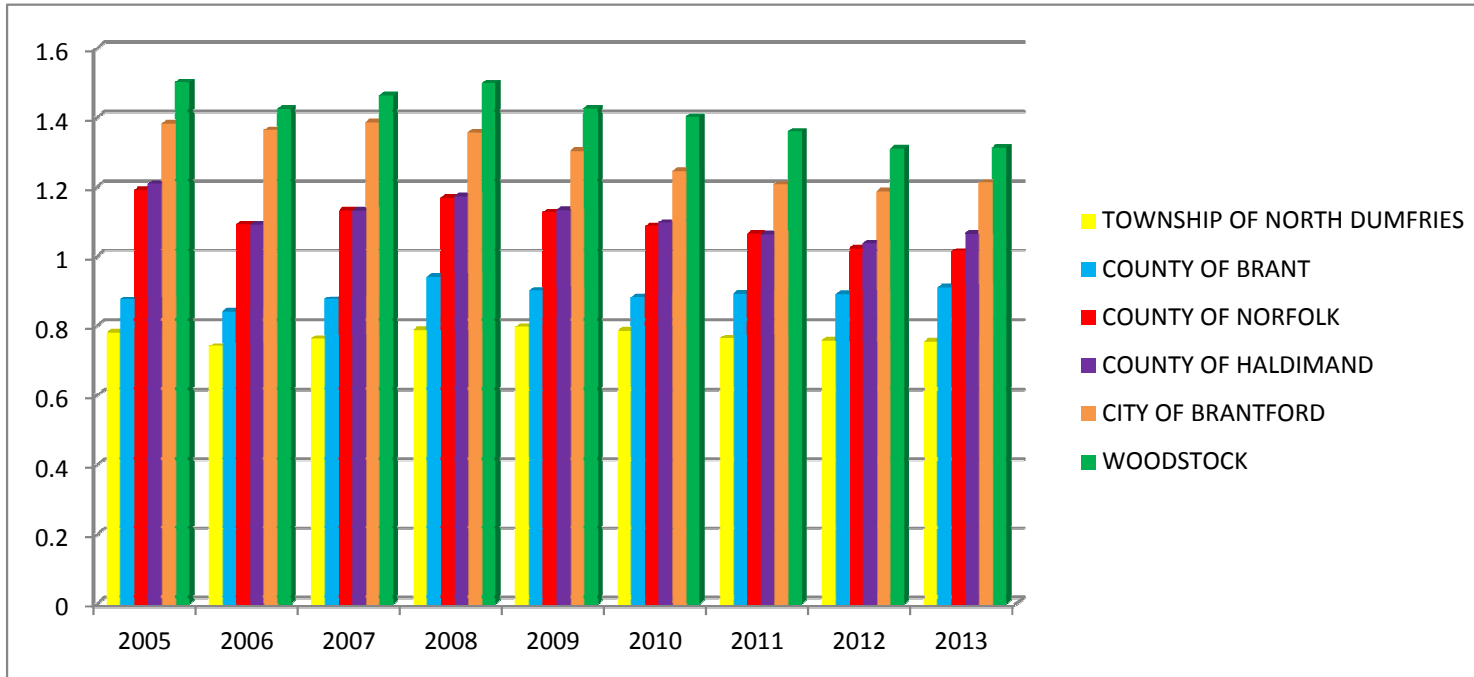


## Tax Comparison 2013 & 2012



| <b>Taxes on a Residential Property Assessed at \$210,000</b> |                   |                   |                                  |                                  |
|--|-------------------|-------------------|----------------------------------|----------------------------------|
|  | <b>2013</b>       | <b>2012</b>       | <b>2013 Comparison to County</b> | <b>2012 Comparison to County</b> |
| TOWNSHIP OF NORTH DUMFRIES                                   | \$2,029.89        | \$2,089.75        | 86.07%                           | 88.57%                           |
| <b>COUNTY OF BRANT</b>                                       | <b>\$2,358.30</b> | <b>\$2,359.56</b> | <b>100.00%</b>                   | <b>100.00%</b>                   |
| TOWNSHIP OF BLANDFORD-BLENHEIM                               | \$2,224.03        | \$2,395.12        | 94.31%                           | 101.51%                          |
| TOWNSHIP OF NORWICH  | \$2,554.15        | \$2,653.99        | 108.30%                          | 112.48%                          |
| CITY OF WATERLOO   | \$2,541.17        | \$2,671.33        | 107.75%                          | 113.21%                          |
| CITY OF HAMILTON (FLAMBOROUGH)                               | \$2,683.44        | \$2,646.00        | 113.79%                          | 112.14%                          |
| CAMBRIDGE  | \$2,670.65        | \$2,764.19        | 113.24%                          | 117.15%                          |
| KITCHENER  | \$2,587.22        | \$2,699.76        | 109.71%                          | 114.42%                          |
| COUNTY OF NORFOLK  | \$2,574.85        | \$2,719.54        | 109.18%                          | 115.26%                          |
| COUNTY OF HALDIMAND  | \$2,678.56        | \$2,714.98        | 113.58%                          | 115.06%                          |
| INGERSOLL  | \$3,317.16        | \$3,187.30        | 140.66%                          | 135.08%                          |
| CITY OF BRANTFORD  | \$2,988.18        | \$3,018.10        | 126.71%                          | 127.91%                          |
| CITY OF HAMILTON (CITY-URBAN)                                | \$2,961.09        | \$3,137.95        | 125.56%                          | 132.99%                          |
| WOODSTOCK  | \$3,202.32        | \$3,339.49        | 135.79%                          | 141.53%                          |