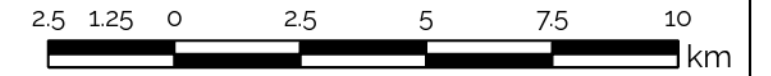


A Simply Grand *Plan*

Schedule B

Natural Heritage System

THIS SCHEDULE SHOULD BE READ AND INTERPRETED IN CONJUNCTION WITH THE OFFICIAL PLAN IN ITS ENTIRETY, INCLUDING THE POLICIES AND OTHER SCHEDULES AND APPENDICES OF THE PLAN



CITY OF BRANTFORD



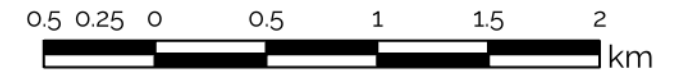
- | | |
|------------------------------|--|
| SETTLEMENT AREA BOUNDARY | NHS FOR THE GROWTH PLAN |
| AQUATIC SPECIES AT RISK | AREAS OF NATURAL AND SCIENTIFIC INTEREST |
| CRITICAL HABITAT OF SPECIES | WOODLANDS |
| SIGNIFICANT WILDLIFE HABITAT | SIGNIFICANT VALLEY LANDS |
| WETLANDS | WATERBODY |

A Simply Grand *Plan*

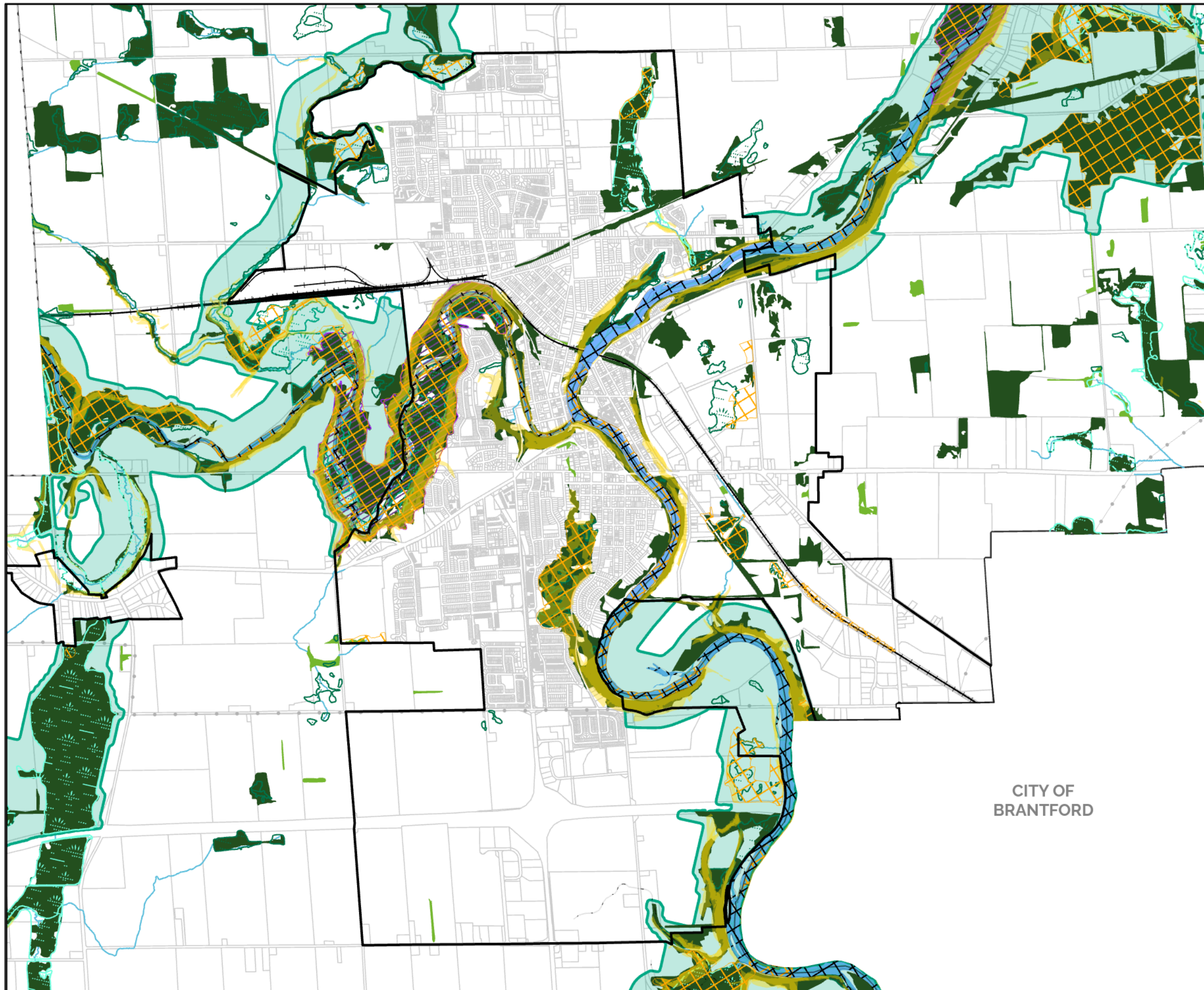
Schedule B - 1

Natural Heritage System

PARIS



THIS SCHEDULE SHOULD BE READ AND INTERPRETED IN CONJUNCTION WITH THE OFFICIAL PLAN IN ITS ENTIRETY, INCLUDING THE POLICIES AND OTHER SCHEDULES AND APPENDICES OF THE PLAN



CITY OF
BRANTFORD

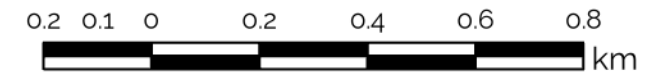
-  SETTLEMENT AREA BOUNDARY
-  CRITICAL AQUATIC HABITAT OF SPECIES
-  AQUATIC SPECIES AT RISK
-  SIGNIFICANT WILDLIFE HABITAT
-  SIGNIFICANT VALLEY LANDS
-  WETLANDS - EVALUATED PROVINCIALY SIGNIFICANT
-  WETLANDS - EVALUATED NON-PROVINCIALY SIGNIFICANT
-  WETLANDS - UNEVALUATED
-  ANSI, EARTH SCIENCE
-  ANSI, LIFE SCIENCE
-  ENHANCEMENT WOODLAND
-  SIGNIFICANT WOODLAND
-  NHS FOR THE GROWTH PLAN
-  WATERBODY
-  SIGNIFICANT WILDLIFE HABITAT
-  WATERCOURSE

A Simply Grand *Plan*

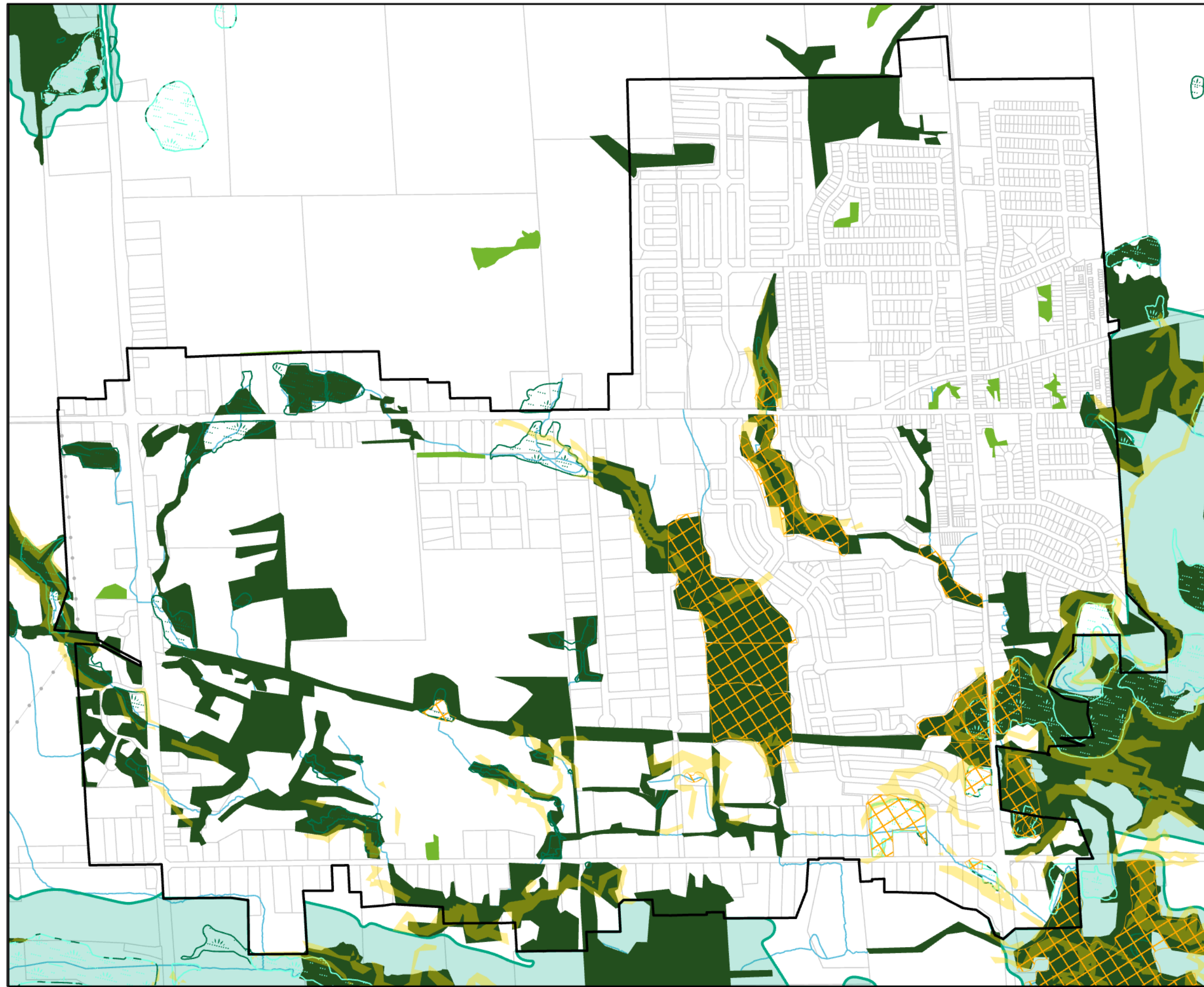
Schedule B - 2

Natural Heritage System

ST. GEORGE



THIS SCHEDULE SHOULD BE READ AND INTERPRETED IN CONJUNCTION WITH THE OFFICIAL PLAN IN ITS ENTIRETY, INCLUDING THE POLICIES AND OTHER SCHEDULES AND APPENDICES OF THE PLAN



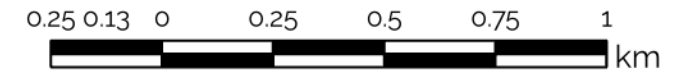
- SETTLEMENT AREA BOUNDARY
- SIGNIFICANT WILDLIFE HABITAT
- SIGNIFICANT VALLEY LANDS
- WETLANDS - EVALUATED PROVINCIALY SIGNIFICANT
- WETLANDS - EVALUATED NON-PROVINCIALY SIGNIFICANT
- WETLANDS - UNEVALUATED
- ENHANCEMENT WOODLAND
- SIGNIFICANT WOODLAND
- NHS FOR THE GROWTH PLAN
- SIGNIFICANT WILDLIFE HABITAT
- WATERCOURSE

A Simply Grand *Plan*

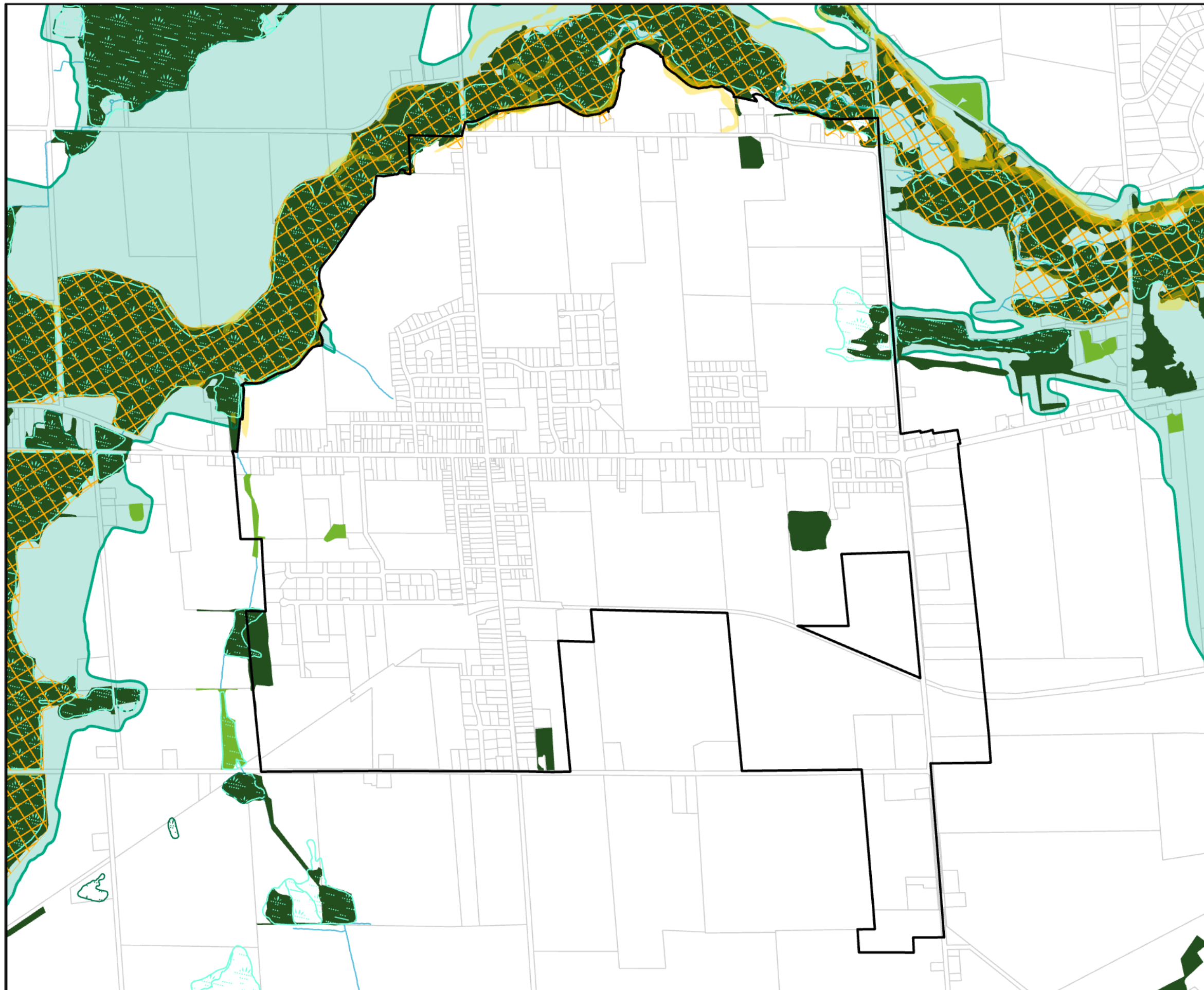
Schedule B - 3

Natural Heritage System

BURFORD



THIS SCHEDULE SHOULD BE READ AND INTERPRETED IN CONJUNCTION WITH THE OFFICIAL PLAN IN ITS ENTIRETY, INCLUDING THE POLICIES AND OTHER SCHEDULES AND APPENDICES OF THE PLAN



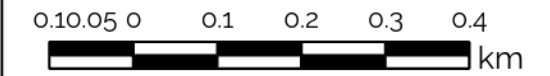
- SETTLEMENT AREA BOUNDARY
- SIGNIFICANT WILDLIFE HABITAT
- SIGNIFICANT VALLEY LANDS
- WETLANDS - EVALUATED PROVINCIALY SIGNIFICANT
- WETLANDS - UNEVALUATED
- ENHANCEMENT WOODLAND
- SIGNIFICANT WOODLAND
- NHS FOR THE GROWTH PLAN
- SIGNIFICANT WILDLIFE HABITAT
- WATERCOURSE

A Simply Grand *Plan*

Schedule B - 4

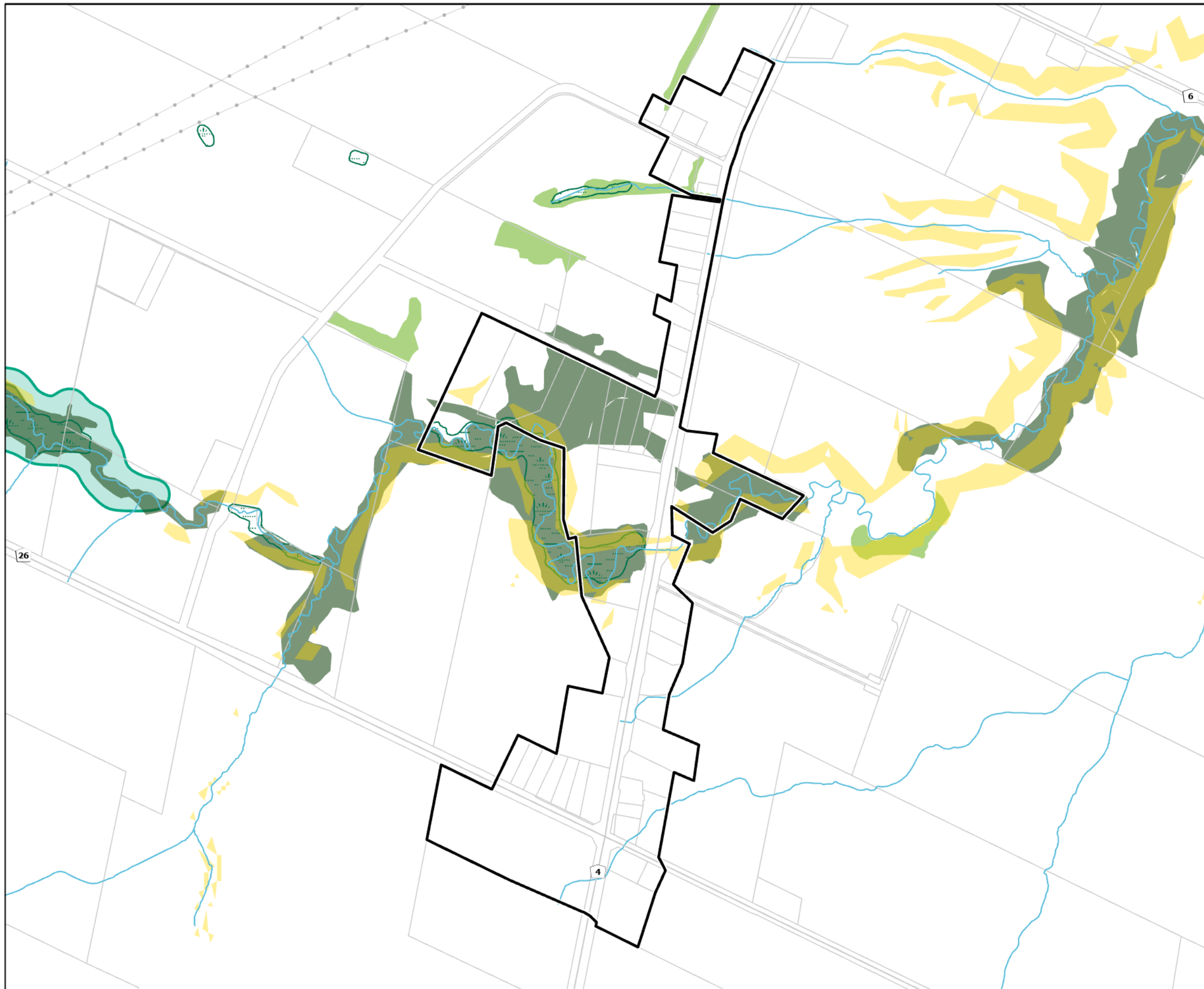
Natural Heritage System

BURTCH



THIS SCHEDULE SHOULD BE READ AND INTERPRETED IN CONJUNCTION WITH THE OFFICIAL PLAN IN ITS ENTIRETY, INCLUDING THE POLICIES AND OTHER SCHEDULES AND APPENDICES OF THE PLAN

-  SETTLEMENT AREA BOUNDARY
-  ENHANCEMENT WOODLAND
-  SIGNIFICANT WOODLAND
-  NHS FOR THE GROWTH PLAN
-  SIGNIFICANT VALLEY LANDS
-  WETLANDS - UNEVALUATED
-  WATERCOURSE

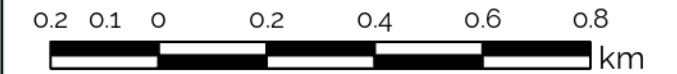


A Simply Grand *Plan*

Schedule B - 5

Natural Heritage System

CAINSVILLE



THIS SCHEDULE SHOULD BE READ AND INTERPRETED IN CONJUNCTION WITH THE OFFICIAL PLAN IN ITS ENTIRETY, INCLUDING THE POLICIES AND OTHER SCHEDULES AND APPENDICES OF THE PLAN

-  SETTLEMENT AREA BOUNDARY
-  WATERBODY
-  AQUATIC SPECIES AT RISK
-  CRITICAL HABITAT OF SPECIES
-  ENHANCEMENT WOODLAND
-  SIGNIFICANT WOODLAND
-  NHS FOR THE GROWTH PLAN
-  SIGNIFICANT VALLEY LANDS
-  WETLANDS - UNEVALUATED
-  WATERCOURSE

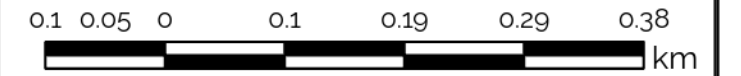


A Simply Grand *Plan*

Schedule B - 6

Natural Heritage System

CATHCART



THIS SCHEDULE SHOULD BE READ AND INTERPRETED IN CONJUNCTION WITH THE OFFICIAL PLAN IN ITS ENTIRETY, INCLUDING THE POLICIES AND OTHER SCHEDULES AND APPENDICES OF THE PLAN

- SETTLEMENT AREA BOUNDARY
- AQUATIC SPECIES AT RISK
- SIGNIFICANT WOODLAND
- NHS FOR THE GROWTH PLAN
- SIGNIFICANT VALLEY LANDS
- WETLANDS - EVALUATED PROVINCIALLY SIGNIFICANT
- WETLANDS - UNEVALUATED
- WATERCOURSE

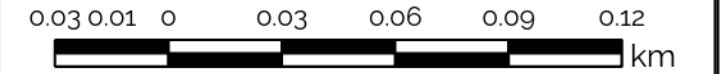


A Simply Grand *Plan*



Schedule B - 7

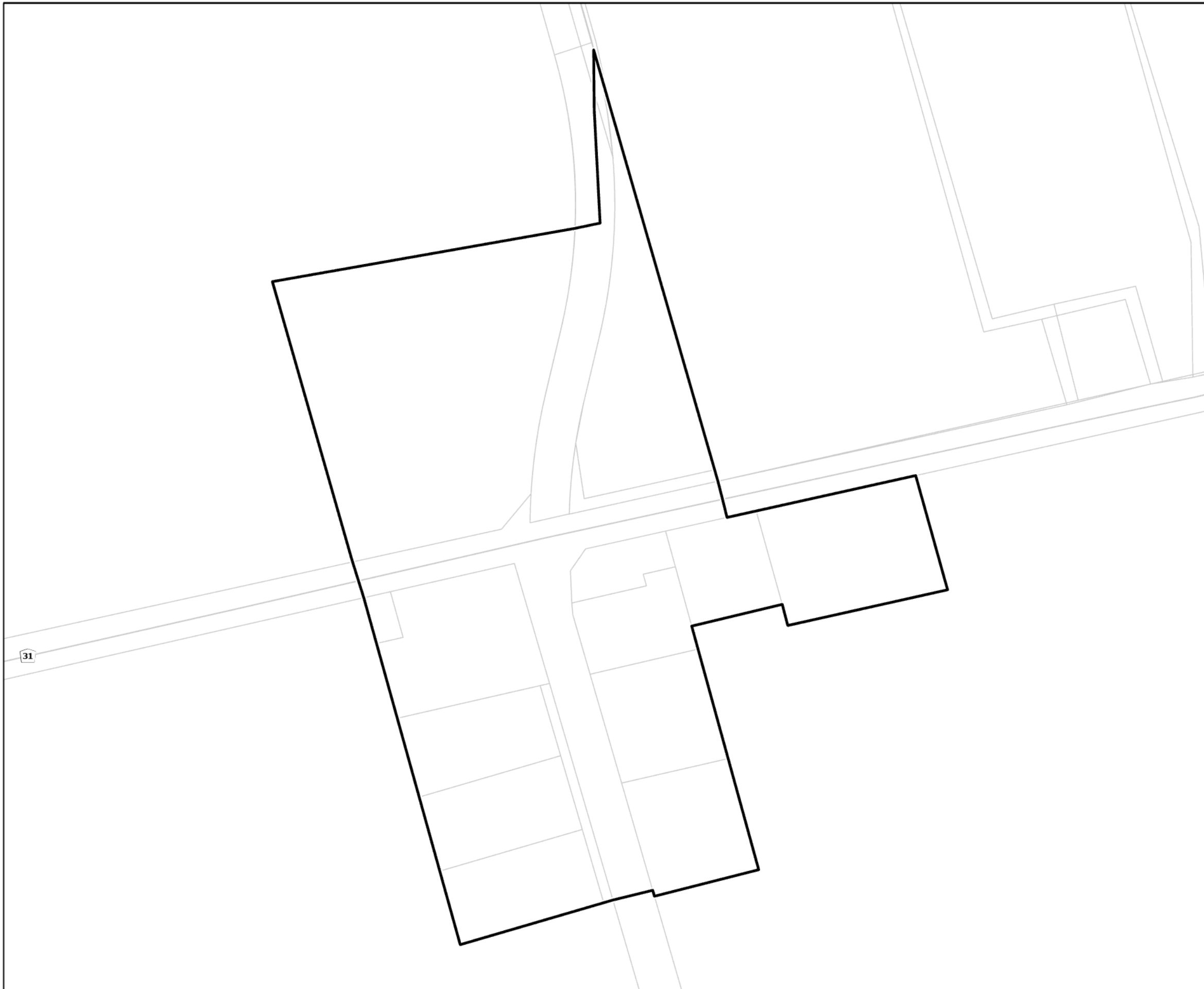
Natural Heritage System

FAIRFIELD PLAINS



THIS SCHEDULE SHOULD BE READ AND INTERPRETED IN CONJUNCTION WITH THE OFFICIAL PLAN IN ITS ENTIRETY, INCLUDING THE POLICIES AND OTHER SCHEDULES AND APPENDICES OF THE PLAN

-  SETTLEMENT AREA BOUNDARY
-  SIGNIFICANT VALLEY LANDS

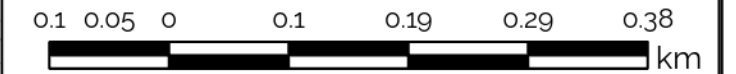


A Simply Grand *Plan*

Schedule B - 8

Natural Heritage System

FALKLAND



THIS SCHEDULE SHOULD BE READ AND INTERPRETED IN CONJUNCTION WITH THE OFFICIAL PLAN IN ITS ENTIRETY, INCLUDING THE POLICIES AND OTHER SCHEDULES AND APPENDICES OF THE PLAN

- SETTLEMENT AREA BOUNDARY
- ENHANCEMENT WOODLAND
- SIGNIFICANT WOODLAND
- NHS FOR THE GROWTH PLAN
- SIGNIFICANT VALLEY LANDS
- WETLANDS - EVALUATED PROVINCIALLY SIGNIFICANT
- WETLANDS - UNEVALUATED
- WATERCOURSE

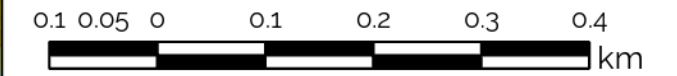


A Simply Grand *Plan*

Schedule B - 9

Natural Heritage System

GLEN MORRIS



THIS SCHEDULE SHOULD BE READ AND INTERPRETED IN CONJUNCTION WITH THE OFFICIAL PLAN IN ITS ENTIRETY, INCLUDING THE POLICIES AND OTHER SCHEDULES AND APPENDICES OF THE PLAN



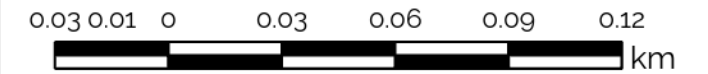
- SETTLEMENT AREA BOUNDARY
- WATERBODY
- AQUATIC SPECIES AT RISK
- CRITICAL HABITAT OF SPECIES
- ENHANCEMENT WOODLAND
- SIGNIFICANT WOODLAND
- ANSI, LIFE SCIENCE
- NHS FOR THE GROWTH PLAN
- SIGNIFICANT VALLEY LANDS
- WETLANDS - EVALUATED PROVINCIALY SIGNIFICANT
- WETLANDS - UNEVALUATED
- WATERCOURSE

A Simply Grand *Plan*

Schedule B - 10

Natural Heritage System

GOBLES



THIS SCHEDULE SHOULD BE READ AND INTERPRETED IN CONJUNCTION WITH THE OFFICIAL PLAN IN ITS ENTIRETY, INCLUDING THE POLICIES AND OTHER SCHEDULES AND APPENDICES OF THE PLAN

- SETTLEMENT AREA BOUNDARY
- ENHANCEMENT WOODLAND
- SIGNIFICANT WOODLAND
- SIGNIFICANT VALLEY LANDS
- WETLANDS - EVALUATED PROVINCIALLY SIGNIFICANT
- WETLANDS - UNEVALUATED
- WATERCOURSE

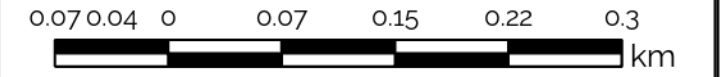


A Simply Grand *Plan*





Schedule B - 11

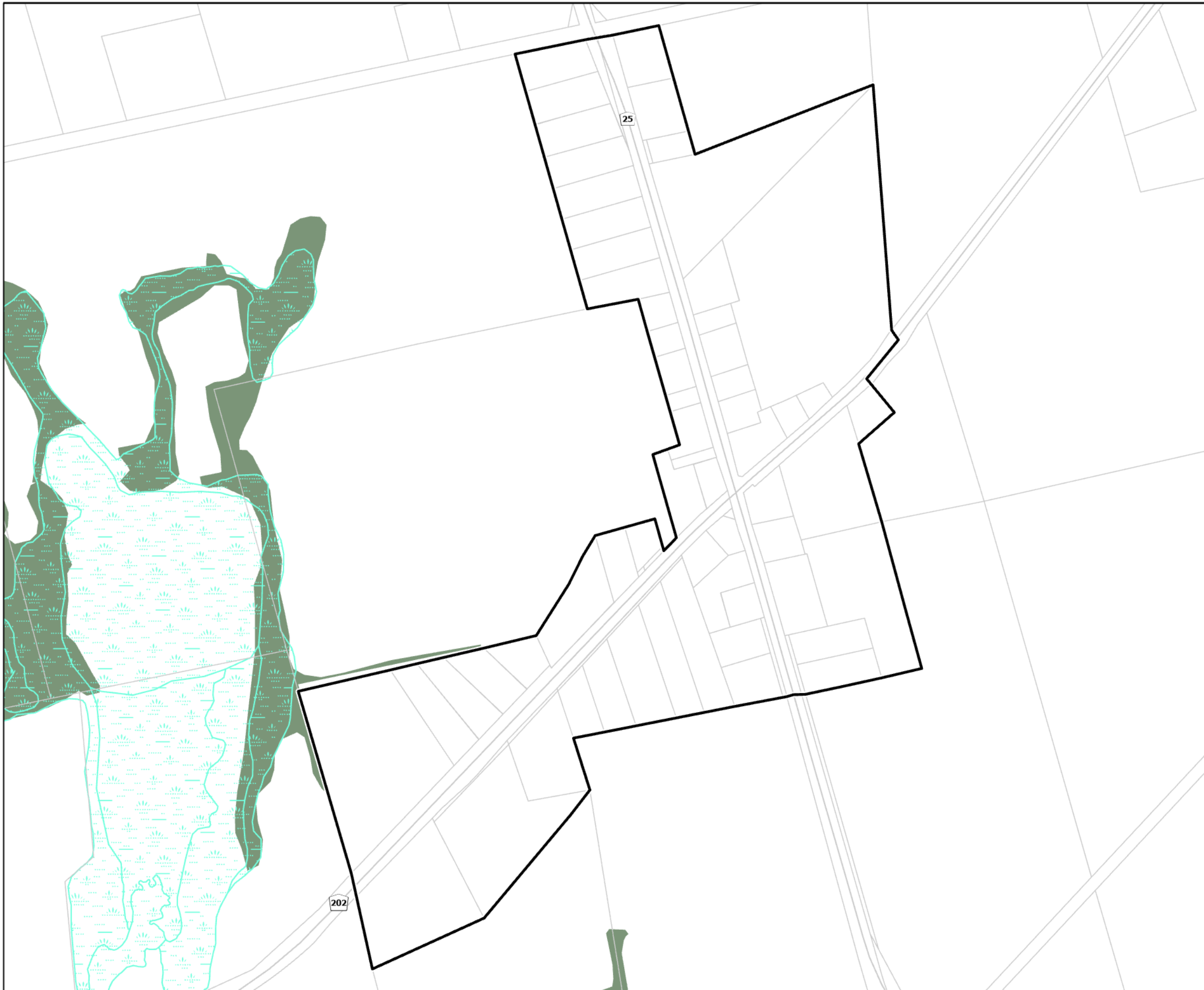
Natural Heritage System

HARLEY



THIS SCHEDULE SHOULD BE READ AND INTERPRETED IN CONJUNCTION WITH THE OFFICIAL PLAN IN ITS ENTIRETY, INCLUDING THE POLICIES AND OTHER SCHEDULES AND APPENDICES OF THE PLAN

-  SETTLEMENT AREA BOUNDARY
-  SIGNIFICANT WOODLAND
-  SIGNIFICANT VALLEY LANDS
-  WETLANDS - EVALUATED PROVINCIALY SIGNIFICANT

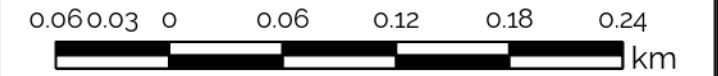


A Simply Grand *Plan*

Schedule B - 12

Natural Heritage System

HARRISBURG



THIS SCHEDULE SHOULD BE READ AND INTERPRETED IN CONJUNCTION WITH THE OFFICIAL PLAN IN ITS ENTIRETY, INCLUDING THE POLICIES AND OTHER SCHEDULES AND APPENDICES OF THE PLAN

- SETTLEMENT AREA BOUNDARY
- SIGNIFICANT WOODLAND
- NHS FOR THE GROWTH PLAN
- SIGNIFICANT VALLEY LANDS
- WETLANDS - EVALUATED PROVINCIALY SIGNIFICANT
- WATERCOURSE

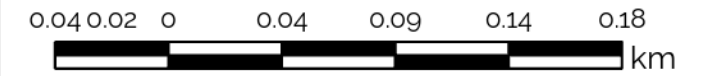


A Simply Grand *Plan*





Schedule B - 13

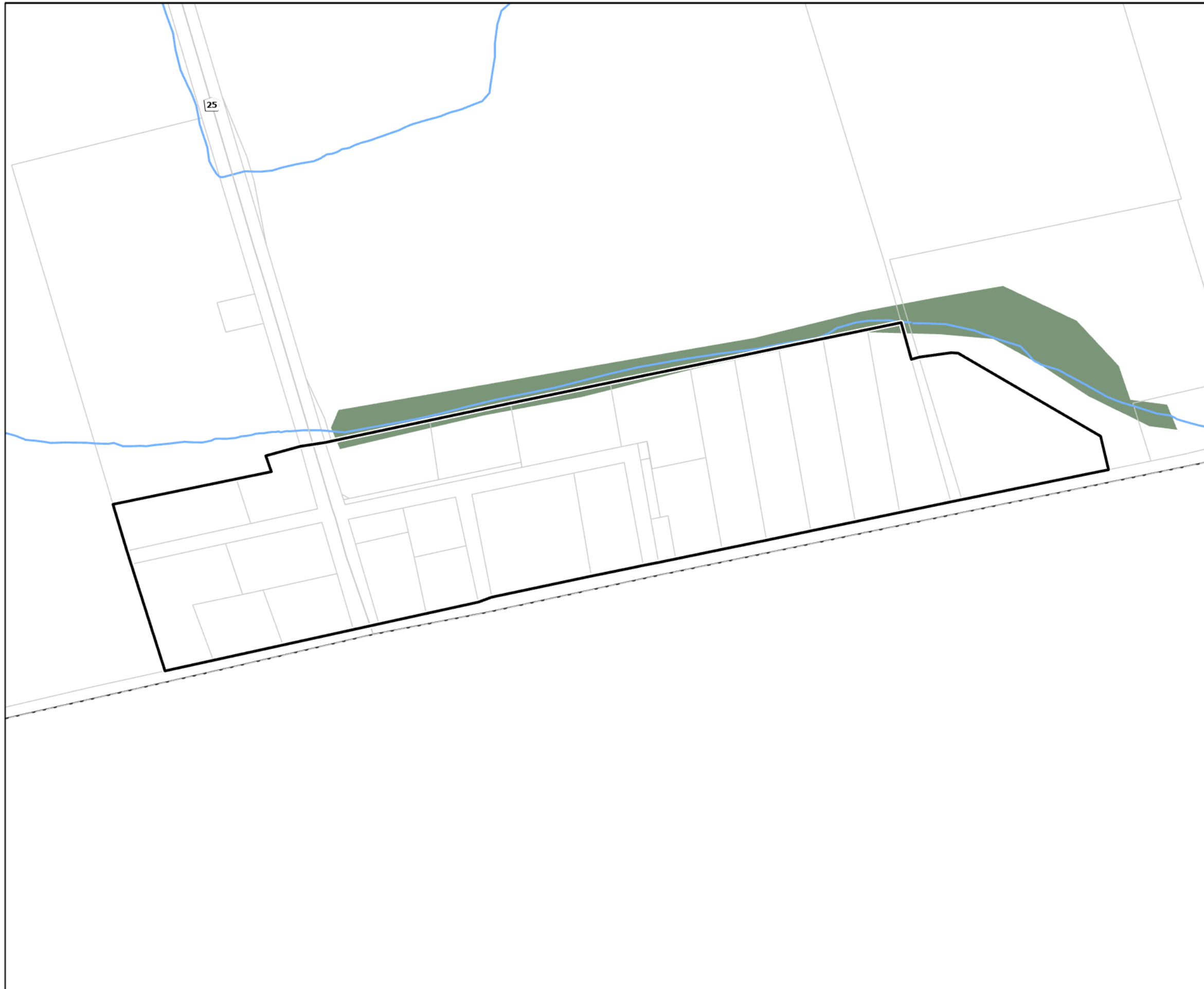
Natural Heritage System

KELVIN



THIS SCHEDULE SHOULD BE READ AND INTERPRETED IN CONJUNCTION WITH THE OFFICIAL PLAN IN ITS ENTIRETY, INCLUDING THE POLICIES AND OTHER SCHEDULES AND APPENDICES OF THE PLAN

-  SETTLEMENT AREA BOUNDARY
-  SIGNIFICANT WOODLAND
-  SIGNIFICANT VALLEY LANDS
-  WATERCOURSE

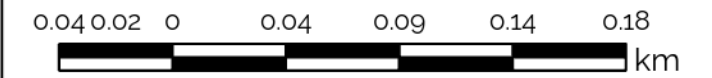


A Simply Grand *Plan*

Schedule B - 14

Natural Heritage System

MIDDLEPORT



THIS SCHEDULE SHOULD BE READ AND INTERPRETED IN CONJUNCTION WITH THE OFFICIAL PLAN IN ITS ENTIRETY, INCLUDING THE POLICIES AND OTHER SCHEDULES AND APPENDICES OF THE PLAN

- SETTLEMENT AREA BOUNDARY
- WATERBODY
- AQUATIC SPECIES AT RISK
- CRITICAL HABITAT OF SPECIES
- NHS FOR THE GROWTH PLAN
- SIGNIFICANT VALLEY LANDS
- WATERCOURSE

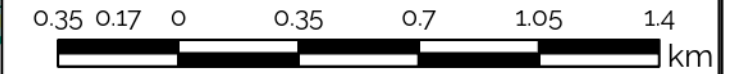


A Simply Grand *Plan*

Schedule B - 15

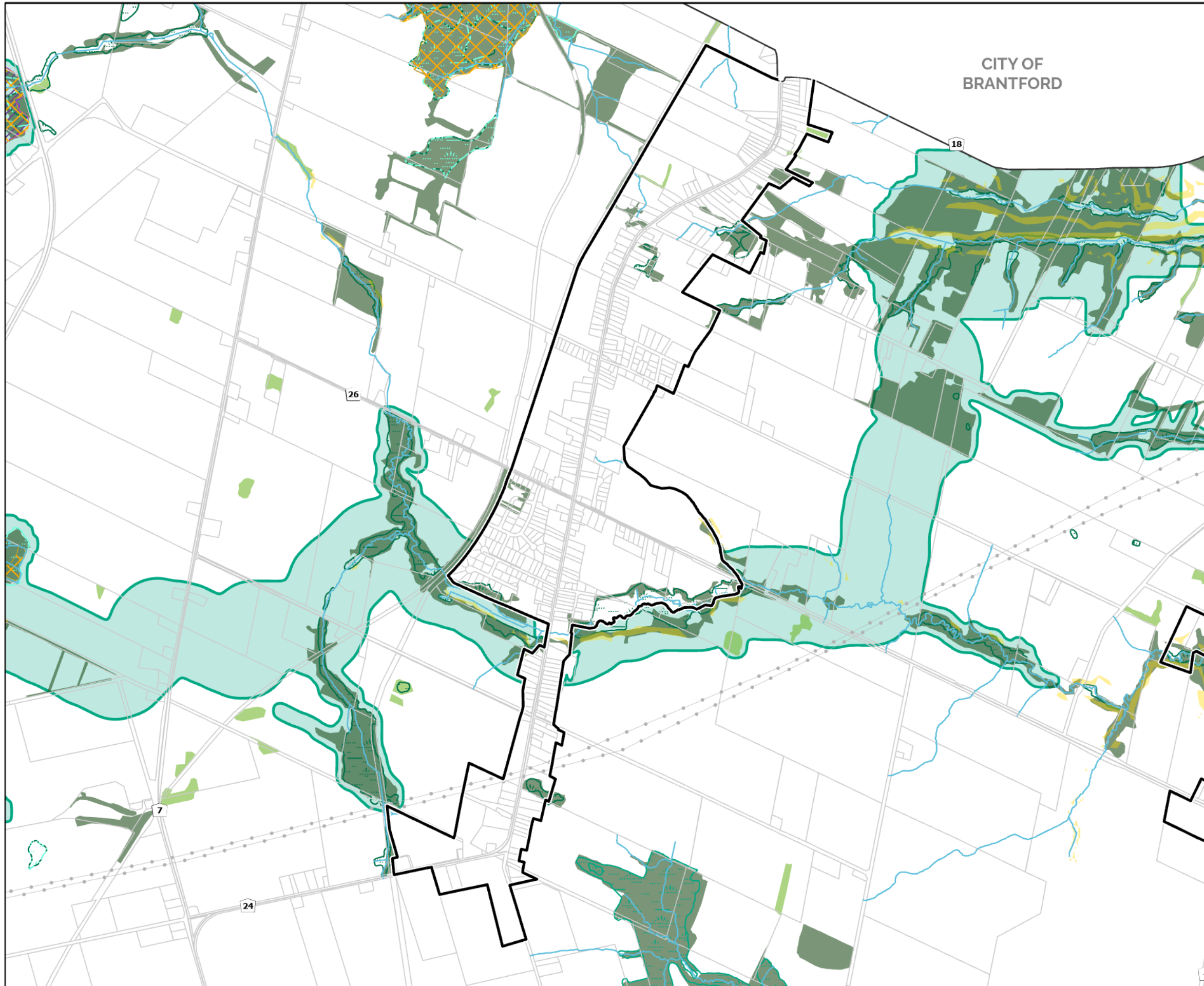
Natural Heritage System

MOUNT PLEASANT



THIS SCHEDULE SHOULD BE READ AND INTERPRETED IN CONJUNCTION WITH THE OFFICIAL PLAN IN ITS ENTIRETY, INCLUDING THE POLICIES AND OTHER SCHEDULES AND APPENDICES OF THE PLAN

- SETTLEMENT AREA BOUNDARY
- ENHANCEMENT WOODLAND
- SIGNIFICANT WOODLAND
- ANSI, LIFE SCIENCE
- NHS FOR THE GROWTH PLAN
- SIGNIFICANT VALLEY LANDS
- WETLANDS - EVALUATED PROVINCIALY SIGNIFICANT
- WETLANDS - EVALUATED NON-PROVINCIALY SIGNIFICANT
- WETLANDS - UNEVALUATED
- WATERCOURSE

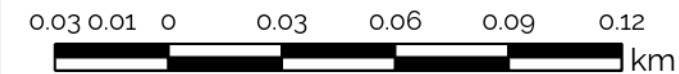


A Simply Grand *Plan*



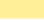


Schedule B - 16

Natural Heritage System

MUIR



THIS SCHEDULE SHOULD BE READ AND INTERPRETED IN CONJUNCTION WITH THE OFFICIAL PLAN IN ITS ENTIRETY, INCLUDING THE POLICIES AND OTHER SCHEDULES AND APPENDICES OF THE PLAN

-  SETTLEMENT AREA BOUNDARY
-  ENHANCEMENT WOODLAND
-  SIGNIFICANT VALLEY LANDS
-  WETLANDS - EVALUATED NON-PROVINCIALY SIGNIFICANT
-  WETLANDS - UNEVALUATED

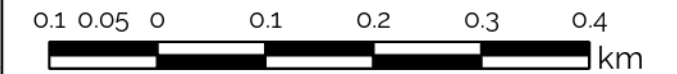


A Simply Grand *Plan*




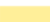


Schedule B - 17

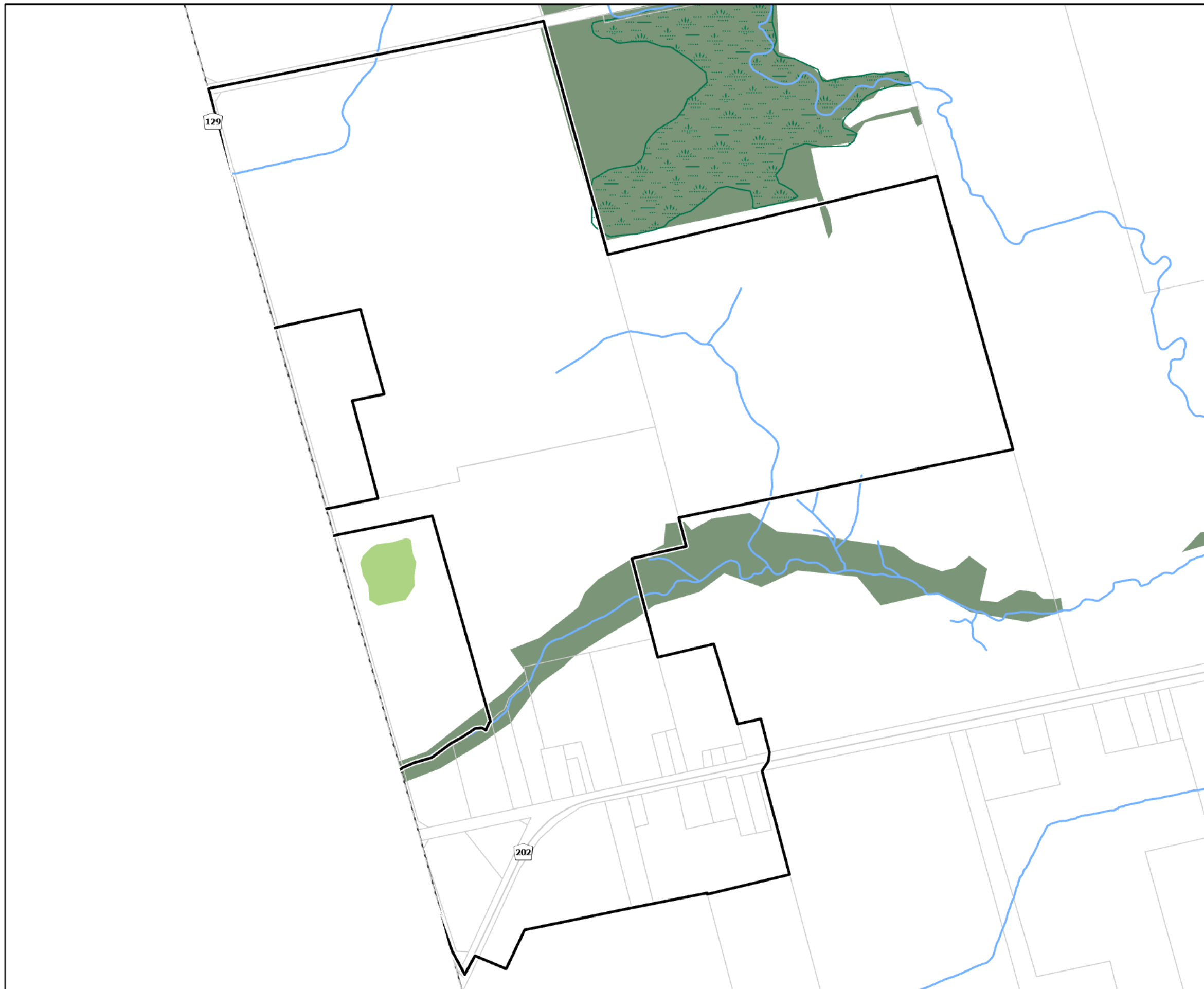
Natural Heritage System

NEW DURHAM



THIS SCHEDULE SHOULD BE READ AND INTERPRETED IN CONJUNCTION WITH THE OFFICIAL PLAN IN ITS ENTIRETY, INCLUDING THE POLICIES AND OTHER SCHEDULES AND APPENDICES OF THE PLAN

-  SETTLEMENT AREA BOUNDARY
-  ENHANCEMENT WOODLAND
-  SIGNIFICANT WOODLAND
-  SIGNIFICANT VALLEY LANDS
-  WETLANDS - UNEVALUATED
-  WATERCOURSE

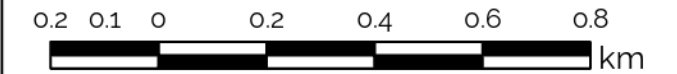


A Simply Grand *Plan*

Schedule B - 18

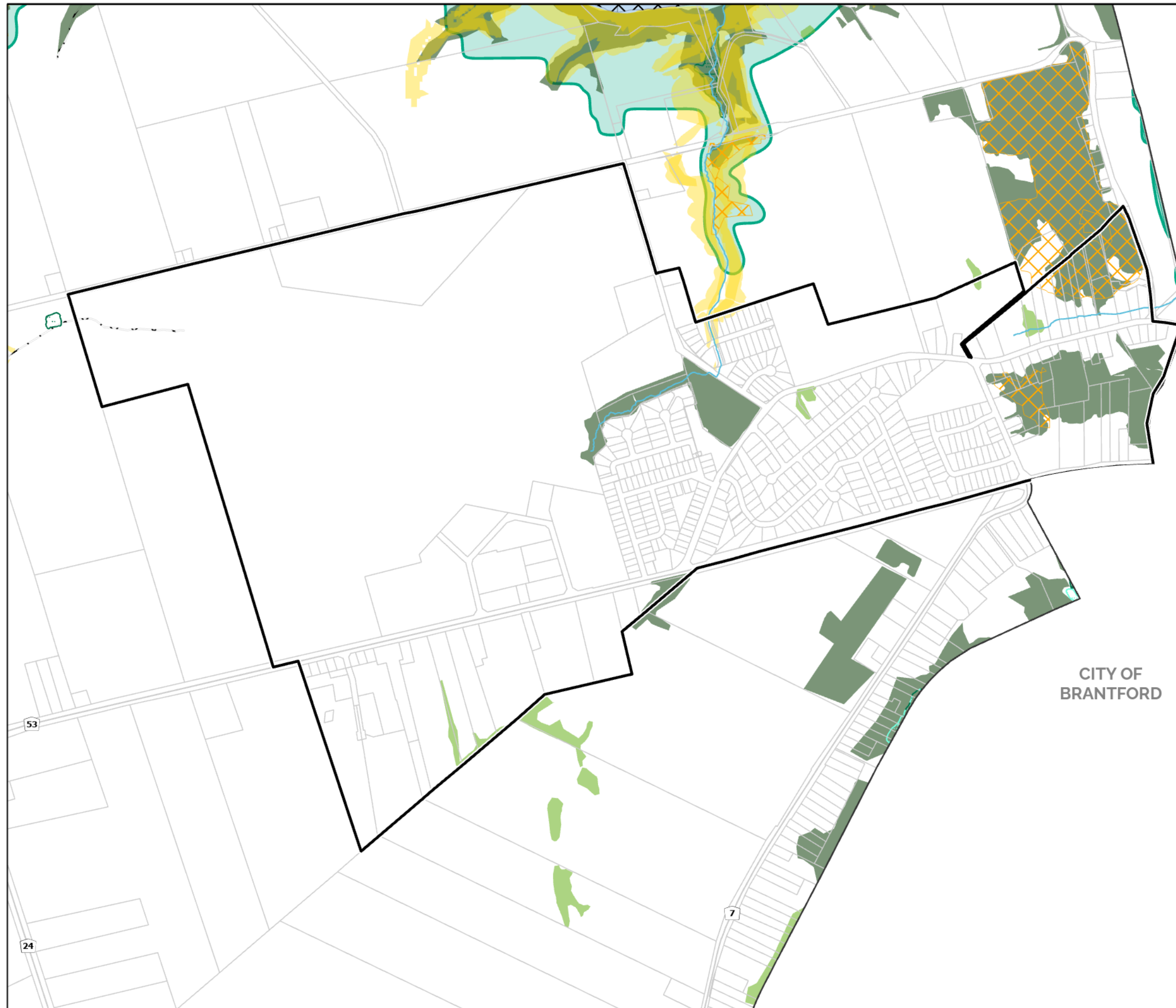
Natural Heritage System

OAKHILL



THIS SCHEDULE SHOULD BE READ AND INTERPRETED IN CONJUNCTION WITH THE OFFICIAL PLAN IN ITS ENTIRETY, INCLUDING THE POLICIES AND OTHER SCHEDULES AND APPENDICES OF THE PLAN

-  SETTLEMENT AREA BOUNDARY
-  WATERBODY
-  AQUATIC SPECIES AT RISK
-  CRITICAL HABITAT OF SPECIES
-  ENHANCEMENT WOODLAND
-  SIGNIFICANT WOODLAND
-  NHS FOR THE GROWTH PLAN
-  SIGNIFICANT VALLEY LANDS
-  WETLANDS - EVALUATED PROVINCIALY SIGNIFICANT
-  WETLANDS - UNEVALUATED
-  SIGNIFICANT WILDLIFE HABITAT
-  WATERCOURSE



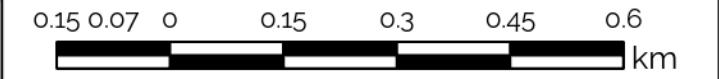
CITY OF
BRANTFORD

A Simply Grand *Plan*

Schedule B - 19

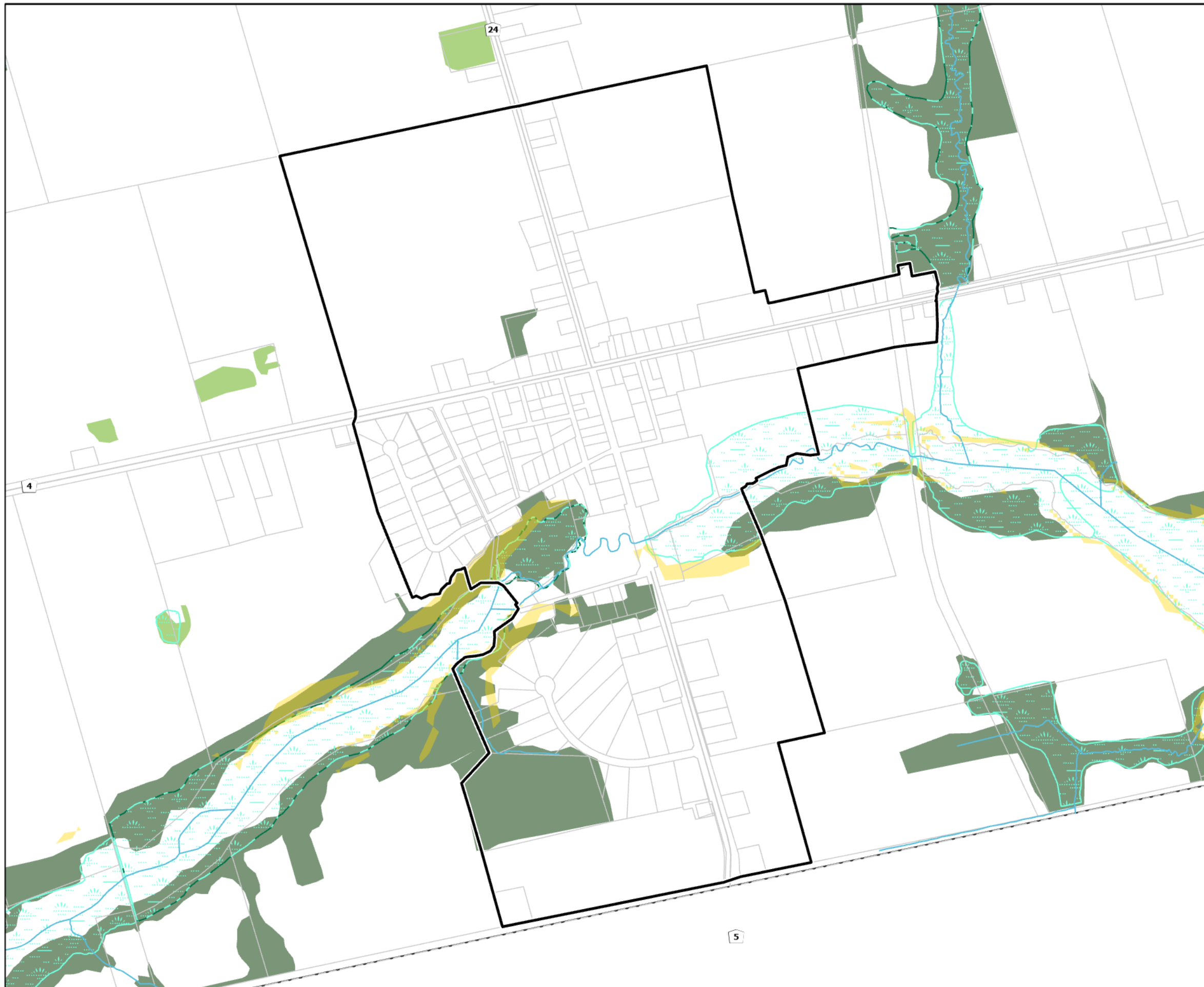
Natural Heritage System

OAKLAND



THIS SCHEDULE SHOULD BE READ AND INTERPRETED IN CONJUNCTION WITH THE OFFICIAL PLAN IN ITS ENTIRETY, INCLUDING THE POLICIES AND OTHER SCHEDULES AND APPENDICES OF THE PLAN

- SETTLEMENT AREA BOUNDARY
- ENHANCEMENT WOODLAND
- SIGNIFICANT WOODLAND
- SIGNIFICANT VALLEY LANDS
- WETLANDS - EVALUATED PROVINCIALLY SIGNIFICANT
- WETLANDS - UNEVALUATED
- WATERCOURSE

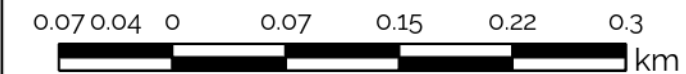


A Simply Grand *Plan*

Schedule B - 20

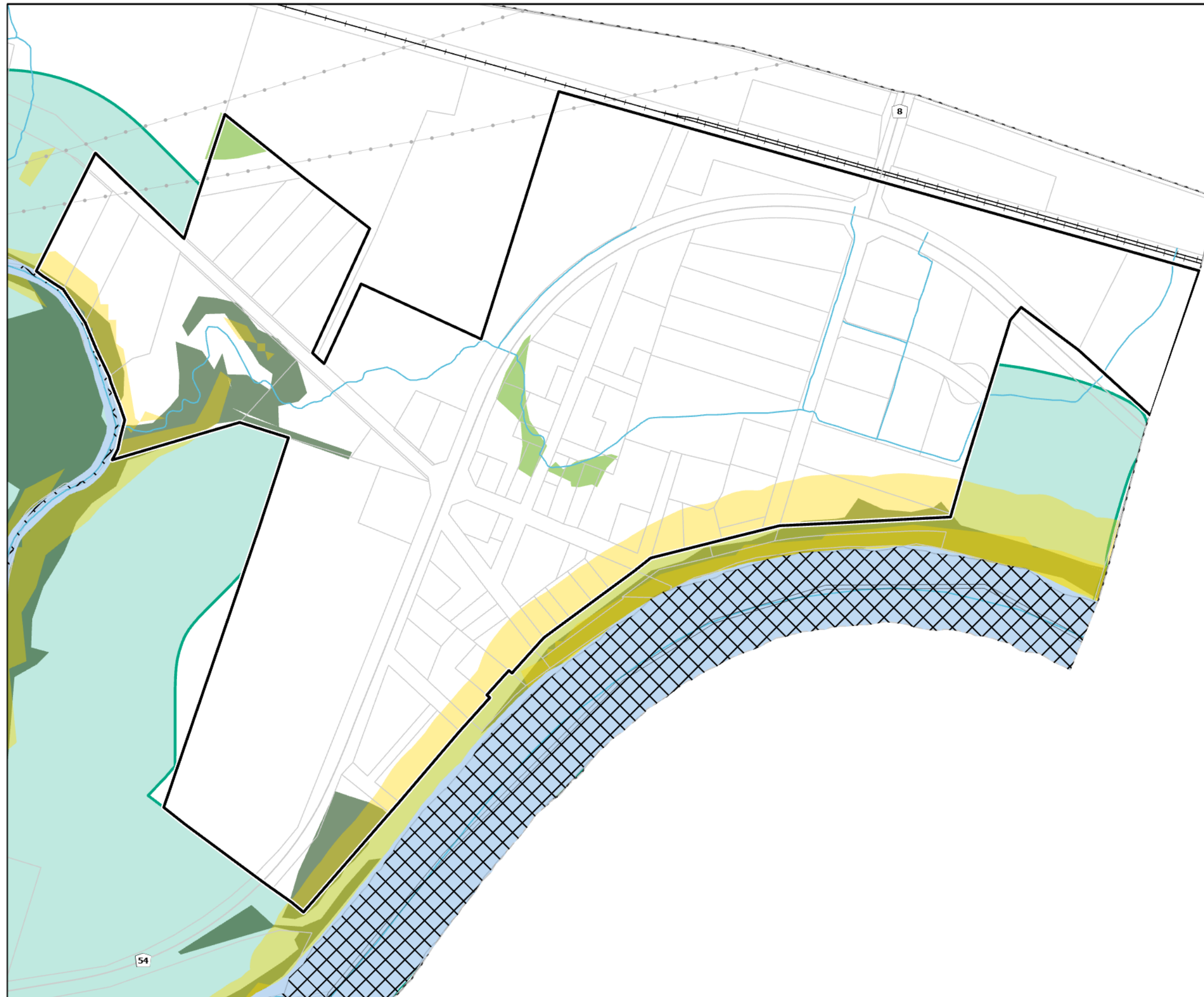
Natural Heritage System

ONONDAGA



THIS SCHEDULE SHOULD BE READ AND INTERPRETED IN CONJUNCTION WITH THE OFFICIAL PLAN IN ITS ENTIRETY, INCLUDING THE POLICIES AND OTHER SCHEDULES AND APPENDICES OF THE PLAN

-  SETTLEMENT AREA BOUNDARY
-  WATERBODY
-  AQUATIC SPECIES AT RISK
-  CRITICAL HABITAT OF SPECIES
-  ENHANCEMENT WOODLAND
-  SIGNIFICANT WOODLAND
-  NHS FOR THE GROWTH PLAN
-  SIGNIFICANT VALLEY LANDS
-  WATERCOURSE



A Simply Grand *Plan*

Schedule B - 21

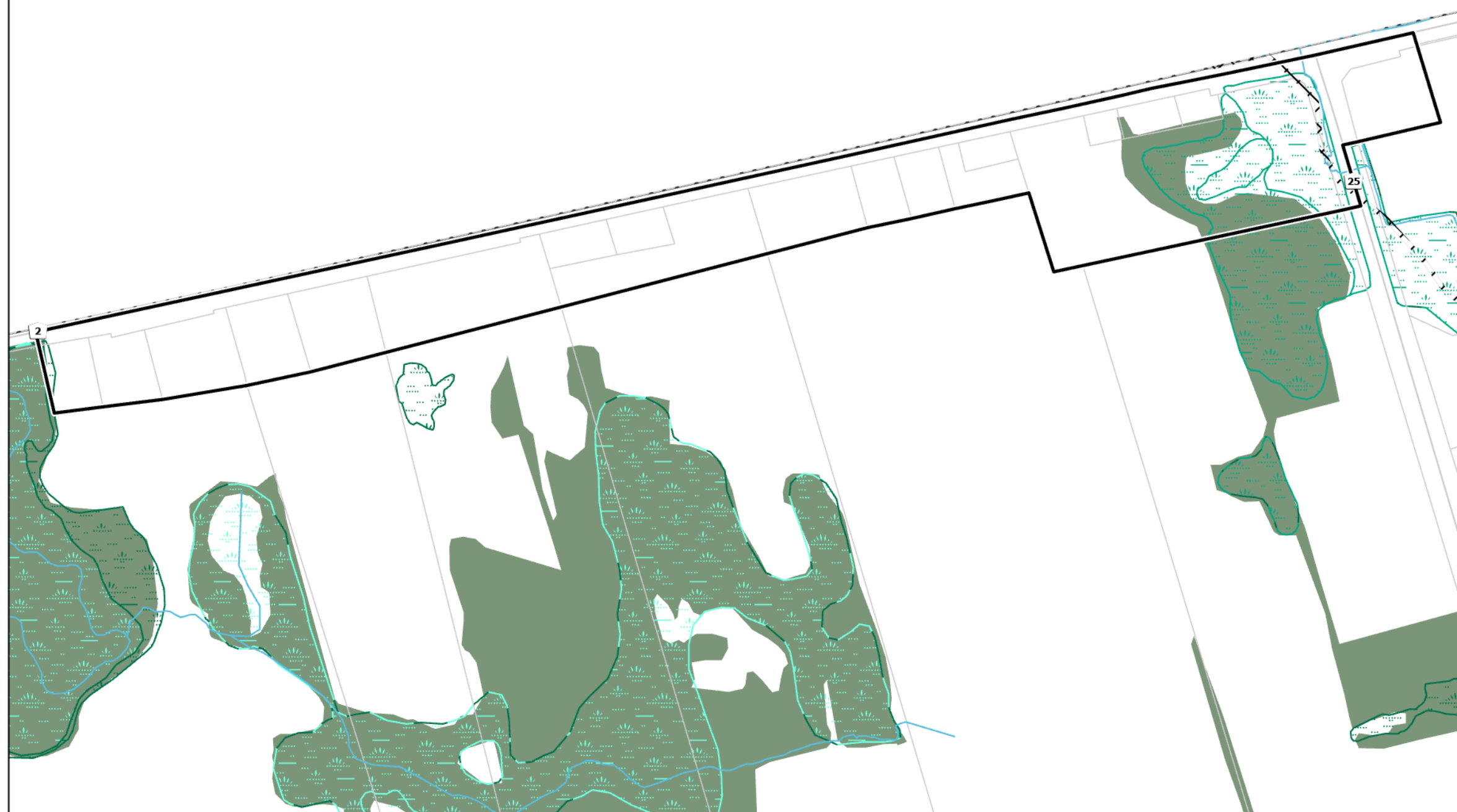
Natural Heritage System

PRINCETON



THIS SCHEDULE SHOULD BE READ AND INTERPRETED IN CONJUNCTION WITH THE OFFICIAL PLAN IN ITS ENTIRETY, INCLUDING THE POLICIES AND OTHER SCHEDULES AND APPENDICES OF THE PLAN

- SETTLEMENT AREA BOUNDARY
- AQUATIC SPECIES AT RISK
- SIGNIFICANT WOODLAND
- SIGNIFICANT VALLEY LANDS
- WETLANDS - EVALUATED PROVINCIALY SIGNIFICANT
- WETLANDS - EVALUATED NON-PROVINCIALY SIGNIFICANT
- WETLANDS - UNEVALUATED
- WATERCOURSE

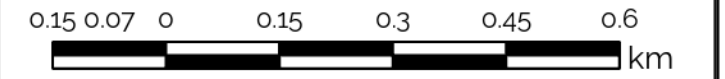


A Simply Grand *Plan*

Schedule B - 22

Natural Heritage System

SCOTLAND



THIS SCHEDULE SHOULD BE READ AND INTERPRETED IN CONJUNCTION WITH THE OFFICIAL PLAN IN ITS ENTIRETY, INCLUDING THE POLICIES AND OTHER SCHEDULES AND APPENDICES OF THE PLAN

- SETTLEMENT AREA BOUNDARY
- ENHANCEMENT WOODLAND
- SIGNIFICANT WOODLAND
- NHS FOR THE GROWTH PLAN
- SIGNIFICANT VALLEY LANDS
- WETLANDS - EVALUATED PROVINCIALY SIGNIFICANT
- WETLANDS - EVALUATED NON-PROVINCIALY SIGNIFICANT
- WETLANDS - UNEVALUATED
- WATERCOURSE

