



Aaron Todd  
District Manager  
Guelph District Office  
Ministry of the Environment, Conservation and Parks  
4<sup>th</sup> Floor, One Stone Road West  
Guelph, ON N1G 4Y2  
[GuelphWasteWater@ontario.ca](mailto:GuelphWasteWater@ontario.ca)

March 30, 2026

Re: 2025 Annual Performance Report for the St. George Water Pollution Control Plant

Attached is the 2025 Annual Performance Report for the St. George Water Pollution Control Plant located at 43 Victor Blvd. St. George, ON in the County of Brant. This report has been completed in accordance with:

- Section 11(4)(a) through (n) cited in Environmental Compliance Approval #2214-BNBM6Z issued on April 26, 2020, and issued to the Corporation of the County of Brant.

This report was prepared by the Ontario Clean Water Agency on behalf of the County of Brant based on the information we have in our records. The report covers the period from January 1, 2025 to December 31, 2025.

Sincerely,

A handwritten signature in blue ink that reads "Raisa Blitterswyk".

Raisa Blitterswyk  
Process and Compliance Technician  
Ontario Clean Water Agency

Cc.

Andrea Bazzard – Director of Environmental Services, County of Brant  
Matthew D'Hondt – Solid Waste/Wastewater Operations Manager, County of Brant  
Lisa Williamson – Water Supervisor, MECP  
Ivanna Okroukh – Water Inspector, MECP  
Stephanie Simpson – Safety, Process and Compliance Manager, OCWA  
Sam Sianas – Regional Hub Manager, OCWA  
Ben Madill – Senior Operations Manager, OCWA



# 2025

# ANNUAL PERFORMANCE REPORT

## ST. GEORGE WATER POLLUTION CONTROL PLANT

43 VICTOR BOULEVARD, ST. GEORGE

MECP ENVIRONMENTAL COMPLIANCE APPROVAL #2214-BNBM6Z



**PREPARED BY: ONTARIO CLEAN WATER AGENCY**

**PREPARED FOR: MINISTRY OF THE ENVIRONMENT, CONSERVATION AND PARKS**

**ON BEHALF OF: THE COUNTY OF BRANT**

**TABLE OF CONTENTS**

EXECUTIVE SUMMARY ..... 4

INTRODUCTION ..... 4

FACILITY AND SYSTEM OVERVIEW ..... 5

PART 1 – SEWAGE TREATMENT SYSTEM (ECA# # 2214-BNBM6Z) REQUIREMENTS ..... 6

(I) SUMMARY AND INTERPRETATION OF ALL MONITORING DATA AND COMPARISON TO THE EFFLUENT LIMITS .. 7

(II) FLOW DATA ..... 12

(III) OPERATING PROBLEMS ENCOUNTERED ..... 13

(V) EFFLUENT QUALITY ASSURANCE AND CONTROL MEASURES ..... 15

(VI) CALIBRATIONS ..... 17

(VII) MEETING THE EFFLUENT OBJECTIVES OF CONDITION 6 ..... 17

(VIII) SLUDGE/ SOLIDS HANDLING AND DISPOSAL ..... 17

(IX) SUMMARY OF COMPLAINTS RECEIVED..... 20

(X) SUMMARY OF BY-PASS, SPILL OR ABNORMAL DISCHARGE EVENTS ..... 20

(XI) NOTICE OF MODIFICATIONS TO SEWAGE WORKS ..... 21

(XII) SUMMARY OF EFFORTS MADE TO ACHIEVE CONFORMANCE WITH F-5-1 “DETERMINATION OF TREATMENT REQUIREMENTS FOR MUNICIPAL AND PRIVATE SEWAGE TREATMENT WORKS” ..... 21

(XIV) CHANGES OR UPDATES FOR CONSTRUCTION AT PLANT ..... 22

(XV) SUMMARY OF DEVIATION FROM MONITORING SCHEDULE ..... 22

APPENDIX A ..... 23

    CALIBRATION RECORD ..... 23

APPENDIX B ..... 25

    2025 EFFLUENT EXCEEDANCE NOTIFICATIONS TO MECP ..... 25

APPENDIX C ..... 29

    2025 BYPASS NOTIFICATION TO MECP ..... 29

APPENDIX D ..... 32

    ADDITIONAL SAMPLING ..... 32

APPENDIX E ..... 34

    2026 SAMPLING CALENDAR ..... 34

## EXECUTIVE SUMMARY

The County of Brant is committed to providing a high level of service in the collection, treatment and management of wastewater. The Ontario Clean Water Agency (OCWA) is currently contracted by the County of Brant to operate the County's wastewater treatment facilities, pumping stations and provide Overall Responsible Operator and Operator in Charge services for the wastewater collection systems.

The St. George Water Pollution Control plant (WPCP) provides treatment of commercial and residential wastewater collected within the village of St. George. The treatment facility is located at 43 Victor Boulevard and is an extended aeration plant with an original design rated capacity of 1,300 m<sup>3</sup>/day. A review of the individual process unit capacities recommended the rated capacity for the plant to be reduced to 1,000 m<sup>3</sup>/day (reduced rated capacity).

This report documents the performance of the sewage works in 2025, as required by the Ministry of the Environment, Conservation and Parks (MECP) Environmental Compliance Approval (ECA) 2214-BNBM6Z (Dated April 26, 2020).

The St. George WPCP is an extended aeration sewage treatment plant providing primary, secondary, and tertiary treatment. Tertiary treatment consists of an effluent sand filter and outlets to Beaver Creek, a tributary of Fairchild Creek.

The average wastewater flow for the 2025 reporting period was 553.3 m<sup>3</sup>/day, which is 55.3% of the facility's reduced rated capacity and is a 10% decrease compared to 2024.

The St. George WPCP performed well during the 2025 reporting period, however two (2) effluent limit exceedances occurred. The natural environment was not affected by these exceedances as indicated by the creek sampling completed on Fairchild Creek and the Unnamed creek. The exceedances were due to equipment failures that were repaired and operations staff were able to restore the treatment process.

The facility recorded the following treatment efficiencies: Carbonaceous Biochemical Oxygen Demand (CBOD5) 98.25% reduction, Total Suspended Solids (TSS) 97.8% reduction, and Total Phosphorous (TP) 95.1% reduction.

3,041m<sup>3</sup> of Liquid Aerobic Biosolids were hauled from the St. George WPCP to the Paris WPCP for further processing and dewatering in 2025. Dewatered Biosolids are land applied to agricultural fields as a conditioning agent typically in spring and fall.

No raw sewage bypasses occurred in 2025 and one bypass of the tertiary treatment sand filter occurred in December 2025 due to a heavy rainfall event. Effluent samples collected during the bypass event met the ECA effluent requirements.

## INTRODUCTION

Wastewater treatment and collection systems in Ontario are governed by the Ministry of the Environment, Conservation and Parks (MECP) and are also subject to federal legislation. The purpose of a wastewater treatment system is to remove solids and nutrients in order to minimize the impact of the effluent on the receiving waterbody. The Environmental Compliance Approval's (ECAs), issued under the Environmental Protection Act, and are facility or system-specific documents through which the MECP sets discharge quality limits for that facility based on the sensitivity of the receiving waters. To comply with the ECAs, OCWA, on behalf of the County of Brant (the County) prepares an Annual Performance Report covering the operation and overall performance of the St. George WPCP.

This Annual Performance Report, for the period of January 1st to December 31st, 2025, is a legislative requirement under Condition 11(4) (a) through (n) of ECA 2214-BNBM6Z (Dated April 26, 2020). This report must be forwarded to the MECP no later than March 31st.

## FACILITY AND SYSTEM OVERVIEW

The St. George WPCP is located in the County of Brant at 43 Victor Blvd and is an extended aeration sewage treatment facility. The St. George WPCP is classified as a class II plant (OWWCO certificate #359, dated March 27, 2013) and has a rated capacity of 1,300 m<sup>3</sup>/day. The St. George WPCP consists of:

- Two (2) manually cleaned grit channels, each with dimensions of 5.0m long by 0.5m wide, and 0.75m deep
- One (1) channel grinder with peak design capacity of 7,800 m<sup>3</sup>/day
- One (1) raw water automatic composite sampler
- One (1) annular aeration tank, with total aeration volume of 828 m<sup>3</sup>, equipped with fine bubble diffused aeration system
- One (1) hybrid screw blower rated at 2,000 m<sup>3</sup>/hr
- Two (2) positive displacement blowers (both standby) each rated at 800 m<sup>3</sup>/hr
- One (1) bypass channel 0.5m wide, discharging to final clarifier or chlorine contact tank as needed (in emergency only)
- One (1) bypass channel 0.5m wide, bypassing the Sand Filter and discharging to the outfall as needed (in emergency only)
- One (1) 10.67 m diameter secondary clarifier, providing a volume of 340 m<sup>3</sup>
- One (1) air lift return and waste activated sludge pump, 200mm diameter, to return activated sludge to aeration and direct waste into aerobic digester 1
- One (1) scum removal air lift pump, 50mm, to remove scum from secondary clarifier and discharge into aerobic digester 1
- One (1) Sand Filtration system consisting of:
  - One (1) automatic backwashing travelling bridge effluent sand filter
  - One (1) backwash water storage tank with a volume of 1.7 m<sup>3</sup>
  - One (1) submersible filter waste pump
- One (1) Ferric chloride storage tank with 25 m<sup>3</sup> total capacity in secondary containment
- Two (2) Ferric Chloride chemical metering pumps rated at 1,892 L/h
- One (1) Ferric Chloride chemical feed pump rated at 24 L/h
- Three (3) sodium hypochlorite storage tanks providing 3 m<sup>3</sup> total storage
- Two (2) Chlorine chemical dosing pumps, each rated 14 L/h
- One (1) annular segment type chlorine tank with a total volume of 26 m<sup>3</sup> and providing approximately 30 minutes of contact time
- One (1) 60-degree V-notch weir located at the overflow of the contact chamber
- Secondary containment for sodium bisulphate drums
- Three (3) sodium bisulfate chemical metering pumps, each rated 1 L/h, one duty, one standby, one emergency
- One (1) oxidation-reduction-potential (ORP) feedback control system to control chemical metering pumps
- Effluent weir complete with open channel monitor, located at the outlet channel of the sand filter downstream of the dechlorination point
- One (1) annular segment type digester having an outer circumference of 10.6m and total volume of 84 m<sup>3</sup>, equipped with a coarse bubble diffusion header assembly and a manual supernatant withdrawal system with an air lift pump to return supernatant to aeration
- One (1) 270 m<sup>3</sup> stage 2 digester equipped with a coarse bubble diffused air system and a telescopic valve supernatant withdrawal system
- One (1) positive displacement blower rated at 485 m<sup>3</sup>/h
- One (1) submersible type sludge transfer pump rated at 12.6 L/s to load trucks for haulage off-site
- One (1) sludge transfer pump rated 35 L/s

- One (1) supernatant return pump capable of pumping 3 L/s
- One (1) supernatant air lift pump, 75mm diameter, discharging to the aeration
- One (1) sludge loading bridge to facilitate loading of liquid biosolids
- One (1) waste sludge loading pipe for biosolids trucks
- One (1) 31m of Outfall sewer pipe discharging to Beaver creek- tributary of Fairchild creek

The inlet works are equipped with two manually cleaned grit channels and one channel grinder. The sewage passes through the inlet works to the annular fine bubble aeration section that utilizes one screw blower and two backup positive displacement blowers. The screw blower remains in service with two positive displacement blowers available on standby. The wastewater then travels to the secondary clarifier which is equipped with scum collection. The sludge is pumped from the secondary clarifier to one of the two (2) aerobic digesters. Ferric chloride is added to the aeration tank to assist in phosphorus removal. Post-secondary treatment involves an automatic backwash travelling bridge equipped tertiary effluent sand filter. Sodium hypochlorite provides disinfection along with a dechlorination system delivering sodium bisulphate. The facility continuously discharges to Beaver Creek, a small tributary of Fairchild Creek, which then outlets to Fairchild Creek and ultimately to the Grand River, approximately 18 km southeast of the WPCP.

Sludge (biosolids) generated from the secondary clarifier is pumped to one of two (2) aerobic digesters. The St. George WPCP does not currently have provisions to further process liquid aerobic biosolids thus, it is hauled to the Paris WPCP on an as needed basis. Biosolids hauled to the Paris WPCP are further processed and dewatered. Dewatered Biosolids are land applied as a conditioning agent in spring and fall.

In the case of high flow events the facility has provision for raw and tertiary bypass. In the event of a raw bypass, the raw water travels through a bypass channel directly to the chlorine contact tank and then to the plant outfall. In the event of a tertiary bypass the water receives primary and secondary treatment and bypasses the tertiary treatment sand filter over the bypass weir and then to the plant outfall.

The following report is presented such that it corresponds with ECA 2214-BNBM6Z Section 11(4)(a).

## **PART 1 – SEWAGE TREATMENT SYSTEM (ECA# # 2214-BNBM6Z) REQUIREMENTS**

As specified in ECA 2214-BNBM6Z samples are to be collected from the St. George WPCP in accordance with Tables 1-4 below, utilizing a combination of grab and composite sampling procedures. Analysis for these parameters is conducted at SGS Lakefield Analytical (SGS) in Lakefield, Ontario. SGS is a member of the Canadian Association for Laboratory Accreditation Incorporated, certificate # 1999.

*TABLE 1 – INFLUENT SAMPLING REQUIREMENTS*

<b>Raw sewage</b>	<b>Sample type</b>	<b>Minimum frequency</b>
CBOD <sub>5</sub>	24-hr Composite	Bi-weekly
Suspended Solids	24-hr Composite	Bi-weekly
Total Phosphorus	24-hr Composite	Bi-weekly
Total Kjeldahl Nitrogen	24-hr Composite	Bi-weekly

*TABLE 2 - FINAL EFFLUENT SAMPLING REQUIREMENTS*

<b>Final effluent</b>	<b>Sample type</b>	<b>Minimum frequency</b>
CBOD <sub>5</sub>	24-hr Composite	Bi-weekly
Suspended Solids	24-hr Composite	Bi-weekly
Total Phosphorus	24-hr Composite	Bi-weekly
Total Ammonia Nitrogen	24-hr Composite	Bi-weekly
E. coli	Grab	Bi-weekly
TRC	Grab	Weekly
pH	Grab/On-site	Bi-weekly
Temperature	Grab/On-site	Bi-weekly
Unionized Ammonia	Calculated	Bi-weekly

TABLE 3 – FAIRCHILD CREEK MONITORING (See Note<sup>1</sup>)

<b>Creek Sampling</b>	<b>Sample type</b>	<b>Minimum frequency</b>
CBOD <sub>5</sub>	Grab	See Note <sup>1</sup>
Suspended Solids	Grab	See Note <sup>1</sup>
Total Phosphorus	Grab	See Note <sup>1</sup>
Total Ammonia Nitrogen	Grab	See Note <sup>1</sup>
Unionized Ammonia Nitrogen	Grab	See Note <sup>1</sup>
E. coli	Grab	See Note <sup>1</sup>
Dissolved Oxygen	On-site	See Note <sup>1</sup>
pH	On-site	See Note <sup>1</sup>
Temperature	On-site	See Note <sup>1</sup>

Note<sup>1</sup>: Fairchild Creek monitoring shall be carried out from April to December, inclusive each year. Samples shall be taken twice a month during the months of June, July and August; and once a month for the remainder of the monitoring months.

TABLE 4 – AEROBIC SLUDGE AND DEWATERED BIOSOLIDS SAMPLING REQUIREMENTS

<b>Parameters</b>	<b>Sample type</b>	<b>Minimum frequency</b>
Total Solids	Grab	Annually
Total Phosphorus	Grab	Annually
Total Ammonia Nitrogen	Grab	Annually
Nitrate as Nitrogen	Grab	Annually
Metal scan -Arsenic, -Cadmium -Cobalt, -Chromium -Copper, -Lead -Mercury, -Molybdenum -Nickel, -Potassium -Selenium, -Zinc	Grab	Annually

**(I) SUMMARY AND INTERPRETATION OF ALL MONITORING DATA AND COMPARISON TO THE EFFLUENT LIMITS**

Note: St. George WPCP does not have influent flow monitoring capabilities and thus, are assumed based on effluent flows. See Section B (IV) Flow Data. As specified in ECA 2214-BNBM6Z Section 11(4)(a), the following is a summary and interpretation of all influent monitoring data and a comparison to the effluent limits outlined in Table 1 of this report, including an overview of the success and adequacy of the St. George WPCP.

Tables 5 and 6 provide a comparison of the monthly average effluent concentrations against the applicable effluent objectives and limits. The St. George WPCP experienced monthly average effluent objective and limit exceedance for Total Ammonia Nitrogen in September and Total Phosphorus in December during the 2025 reporting period. Further details regarding this exceedance are provided in Appendix B- 2025 Effluent Exceedance Notifications to MECP.

TABLE 5 – FINAL EFFLUENT AVERAGE MONTHLY CONCENTRATIONS

	<b>CBOD<sub>5</sub></b> mg/L	<b>TSS</b> mg/L	<b>Total Phosphorus</b> mg/L	<b>Total Ammonia Nitrogen</b> mg/L	<b>pH</b> min-max	<b>Temp</b> °C	<b>Unionized Ammonia</b> mg/L	<b>E. coli</b> 200 MPN /100ml	<b>**TRC</b> (mg/L) min-max
<b>ECA Objective</b>	<b>10</b>	<b>10</b>	<b>0.3</b>	<b>3.0 Nov-Apr</b> <b>1.0 May-Oct</b>	<b>6.5-8.5</b>	-	-	<b>150</b>	<b>ND</b>
<b>ECA Limit</b>	<b>15</b>	<b>15</b>	<b>0.42</b>	<b>3.60 Nov-Apr</b> <b>1.20 May-Oct</b>	<b>6.0-9.5</b>	-	-	<b>200</b>	<b>0.02</b>
<b>Jan</b>	3.33	4.00	0.26	0.77	7.15-7.62	12.77	0.002	13.40	0.00-0.02
<b>Feb</b>	2.33	2.33	0.15	0.53	6.54-7.78	12.97	0.004	7.71	0.00-0.02
<b>Mar</b>	2.00	2.50	0.13	0.40	6.98-7.86	14.10	0.001	22.05	0.00-0.02
<b>Apr</b>	3.00	3.00	0.15	1.53	6.50-7.91	17.70	0.006	0.17	0.00-0.02
<b>May</b>	2.50	4.00	0.16	0.50	6.67-7.76	16.05	0.002	1.91	0.00-0.02
<b>June</b>	2.00	2.50	0.16	0.50	6.95-8.00	18.05	0.006	1.00	0.00-0.02
<b>July</b>	2.00	2.00	0.07	0.13	6.25-8.00	22.70	0.001	0.10	0.00-0.02
<b>Aug</b>	2.00	2.00	0.12	0.30	6.62-7.54	23.90	0.001	1.00	0.00-0.02
<b>Sept</b>	2.00	4.67	0.18	1.33	6.65-8.07	18.23	0.051	3.17	0.00-0.02
<b>Oct</b>	2.00	2.00	0.18	0.10	6.91-7.77	15.50	0.004	1.00	0.00-0.02
<b>Nov</b>	2.00	2.50	0.18	0.50	6.96-8.08	19.40	0.002	1.00	0.00-0.02
<b>Dec</b>	3.00	2.00	0.54	0.45	6.53-8.15	13.43	0.018	1.00	0.00-0.02
<b>Avg</b>	<b>2.40</b>	<b>2.79</b>	<b>0.19</b>	<b>0.59</b>	<b>6.25-8.15</b>	<b>17.07</b>	<b>0.010</b>	<b>4.46</b>	<b>0.00-0.02</b>
<b>Seasonal Avg. Nov-April</b>				<b>0.81</b>					
<b>Seasonal Avg. May-Oct</b>				<b>0.47</b>					

\* ECA Objective exceedances are highlighted above

\*\*TRC reported as a range of samples that are collected throughout the month.

TABLE 6 – FINAL EFFLUENT AVERAGE MONTHLY WASTE LOADINGS

	<b>CBOD<sub>5</sub> (kg/d)</b>	<b>Total Suspended Solids (kg/d)</b>	<b>Total Phosphorus (kg/d)</b>	<b>Total Ammonia Nitrogen (kg/d)</b>
<b>Loading ECA Limits</b>	<b>19.5</b>	<b>19.5</b>	<b>0.55</b>	<b>4.70 (Nov-Apr) 1.60 (May-Oct)</b>
<b>January</b>	1.82	2.19	0.14	0.42
<b>February</b>	1.33	1.16	0.07	0.27
<b>March</b>	1.35	1.68	0.08	0.27
<b>April</b>	206	2.06	0.11	1.05
<b>May</b>	1.50	2.40	0.10	0.30
<b>June</b>	0.9.	1.16	0.07	0.23
<b>July</b>	0.86	0.86	0.03	0.06
<b>August</b>	0.99	0.99	0.06	0.15
<b>September</b>	1.15	2.68	0.11	0.77
<b>October</b>	1.01	1.01	0.09	0.15
<b>November</b>	1.10	1.38	0.10	0.28
<b>December</b>	1.99	1.22	0.33	0.88
<b>Average</b>	<b>1.34</b>	<b>1.57</b>	<b>0.11</b>	<b>0.40</b>
<b>Seasonal Avg. Nov-Apr</b>				<b>0.53</b>
<b>Seasonal Avg. May-Oct</b>				<b>0.28</b>

The St. George WPCP performed well during the 2025 reporting period, however there were two (2) limit/objective exceedances. In September, the total ammonia nitrogen (TAN) was exceeded with a monthly average result of 1.33 mg/L, which is above both the ECA objective and limit of 1.3 mg/L. This exceedance was caused by a faulty DO probe which the aeration blower uses to increase or decrease airflow to the aeration tank. Due to the constant fluctuating of the screw blower, it was not able to maintain a steady dissolved oxygen level in the aeration. The blower was switched to ignore the DO probe and maintain a set point speed. This remedied the issue until a replacement probe was ordered and installed on October 23<sup>rd</sup> and the issue was fully resolved. The natural environment was not negatively impacted by this exceedance, creek sampling completed in September and October indicated no negative effects on Fairchild Creek or Beaver Creek. Please see *tables 10-13* for the full analysis results.

In the month of December, the Total phosphorous exceeded with a monthly average of 0.54 mg/L, which is above both the ECA objective and limit of 0.42 mg/L. This exceedance was a result of low aeration DO due to power failure, which lasted eight (8) hours. With the duty Screw Blower out of service, the generator is only able to power one of the two secondary blowers. A process upset was apparent immediately following the power loss. Once power was restored the secondary blower was started. Problems were also experienced with the Ferric chloride dosing pump, which required maintenance attention. In addition to these equipment malfunctions a bypass event occurred on December 28; additional bypass sampling contributed to the high phosphorous monthly average. The bypass event is discussed in greater detail in *Section J- Summary of By-Pass, Overflows of Other Events*. Creek sampling completed in December indicated no measurable impact to Fairchild Creek and Beaver Creek. January data is not available as sampling is paused until April when there is a higher amount of active aquatic life.

The non-compliances were reported to the MECP in accordance with Section 11 of ECA 2214BNBM6Z. Refer to *Appendix B* for MECP correspondence. No additional samples or monitoring were requested by the MECP at the time.

The following tables show the percent removal from the monthly average raw influent concentrations to the monthly average final effluent concentrations for CBOD<sub>5</sub>, TSS and TP respectively

TABLE 7– TREATMENT EFFICIENCY FOR CBOD<sub>5</sub> REMOVAL

<i>Month</i>	<i>Incoming CBOD<sub>5</sub> (mg/L)</i>	<i>Effluent CBOD<sub>5</sub> (mg/L)</i>	<i>Percent Removal (%)</i>
January	276.6	3.33	98.8
February	154.1	2.33	98.5
March	71.6	2.00	97.2
April	122.5	3.00	97.5
May	133.3	2.50	98.1
June	137.1	2.00	98.5
July	194.4	2.00	98.9
August	141.6	2.00	98.6
September	157.0	2.00	98.7
October	142.5	2.00	98.6
November	111.50	2.00	98.2
December	115.00	3.00	97.4
<b>Average</b>	<b>146.5</b>	<b>2.35</b>	<b>98.25</b>

TABLE 8 – TREATMENT EFFICIENCY FOR SUSPENDED SOLIDS REMOVAL

<i>Month</i>	<i>Incoming TSS (mg/L)</i>	<i>Effluent TSS (mg/L)</i>	<i>Percent Removal (%)</i>
January	331.6	4.00	98.8
February	159.0	2.33	98.5
March	70.5	2.50	96.5
April	106.0	3.00	97.2
May	280.0	4.00	98.6
June	55.5	2.50	95.5
July	186.3	2.00	98.9
August	224.0	2.00	99.1
September	189.0	4.67	97.5
October	342.0	2.00	99.4
November	66.0	2.50	96.2
December	67.5	2	97.0
<b>Average</b>	<b>173.12</b>	<b>2.79</b>	<b>97.8</b>

TABLE 9 – TREATMENT EFFICIENCY FOR PHOSPHORUS REMOVAL

<i>Month</i>	<i>Incoming TP (mg/L)</i>	<i>Effluent TP (mg/L)</i>	<i>Percent Removal (%)</i>
January	4.84	0.26	94.6
February	3.71	0.15	95.9
March	2.55	0.13	94.9
April	2.96	0.15	94.9
May	4.85	0.16	96.7
June	3.93	0.16	95.9
July	4.05	0.07	98.3
August	4.18	0.12	97.1
September	5.71	0.18	96.8
October	4.83	0.18	96.3
November	3.27	0.18	94.5
December	4.03	0.58	85.6
<b>Average</b>	<b>4.08</b>	<b>0.19</b>	<b>95.1</b>

As required in ECA 2214-BNBM6Z Schedule D, monitoring of Fairchild Creek shall be carried out from April to December, inclusive, each year. Samples shall be taken twice a month during the months of June, July and August, and once a month for the remainder of the monitoring months.

Reviewing the sample results upstream and downstream from the plant discharge pipe it appears that there is no negative impact from the St. George WPCP on Beaver Creek or Fairchild Creek. Tables 10 to 13 data indicates elevated E. coli results typically during the summer months when flows and levels are reduced in the creek and warmer temperatures accelerates E. coli growth. Field pH is typically lower at the discharge sample point, and downstream of the plant bringing it down into the normal range. There is minimal change between: field temperature, NH<sub>3</sub>+NH<sub>4</sub>, CBOD, unionized ammonia N and dissolved oxygen at the sample points. Lastly, total suspended solids (TSS) and total phosphorus (TP) appears to be reduced after the WPCP discharge, likely due to the lower TSS and TP value of the effluent diluting the creek.

**TABLE 10 – UNNAMED CREEK SAMPLING -LOWER WETLANDS (UPSTREAM OF PLANT DISCHARGE PIPE – LOCATION 43.237133, -80.242990)**

	Apr	May	June		July		August		Sept	Oct	Nov	Dec
CBOD (mg/L)	<4	<4	<4	5	<4	<4	<4	<4	<4	<4	<4	<4
TSS (mg/L)	16	16	16	112	64	467	14	44	34	5	43	138
Total Phosphorus	0.03	0.04	0.06	0.21	0.20	0.032	0.078	0.090	0.084	0.043	0.121	0.082
NH <sub>3</sub> + NH <sub>4</sub> (mg/L)	<0.1	<0.1	<0.1	0.1	<0.1	<0.1	<0.1	<0.1	<0.1	<0.1	<0.1	<0.1
Unionized Ammonia	<0.0	0.00	0.00	0.00	0.00	<0.00	<0.00	<0.00	<0.00	<0.00	<0.00	<0.00
E. coli	39	77	365	1986	328	461	138	387	613	114	142	101
Dissolved Oxygen	11.9	9.76	8.12	7.70	8.06	7.84	9.69	10.41	8.37	11.62	12.75	13.54
Field pH	7.51	8.05	7.86	7.85	7.95	7.61	7.36	8.15	7.82	7.84	8.21	7.80
Field Temperature	5.90	13.0	19.2	20.5	22.2	24.00	23.30	16.30	15.50	12.40	11.00	0.80

**TABLE 11 – UNNAMED CREEK SAMPLING – ST. GEORGE WPCP DISCHARGE (DOWNSTREAM OF PLANT DISCHARGE PIPE – LOCATION 43.237445, -80.243975)**

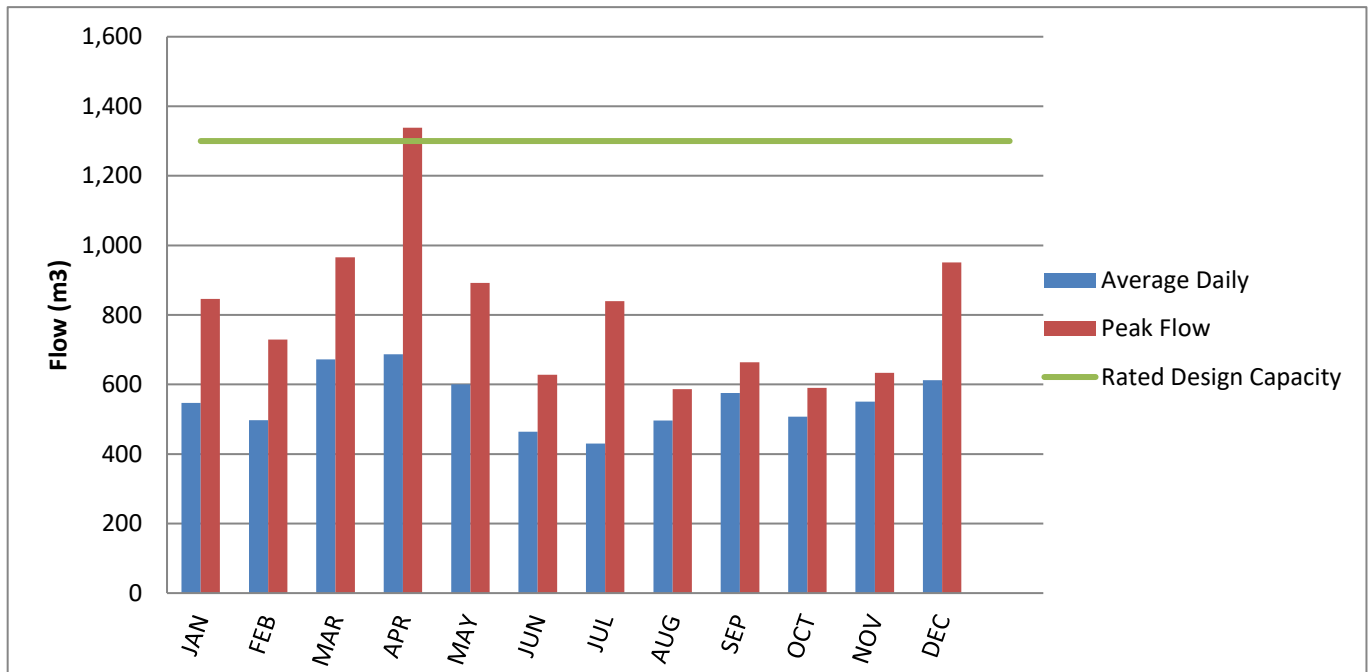
	April	May	June		July		Aug		Sept	Oct	Nov	Dec
DO	9.97	7.70	6.91	7.70	7.29	6.26	6.64	6.36	7.18	8.01	7.50	7.70
Field pH	6.98	7.44	7.23	7.00	7.85	7.21	6.72	7.81	6.99	7.74	7.85	7.77
Temperature	11.50	14.00	18.30	19.30	22.70	21.80	23.50	20.10	15.40	19.00	16.90	11.20

**TABLE 12 – FAIRCHILD CREEK SAMPLING – BURT RD BRIDGE (UPSTREAM OF CONNECTION WITH UNNAMED CREEK – LOCATION 43.248335, -80.235139)**

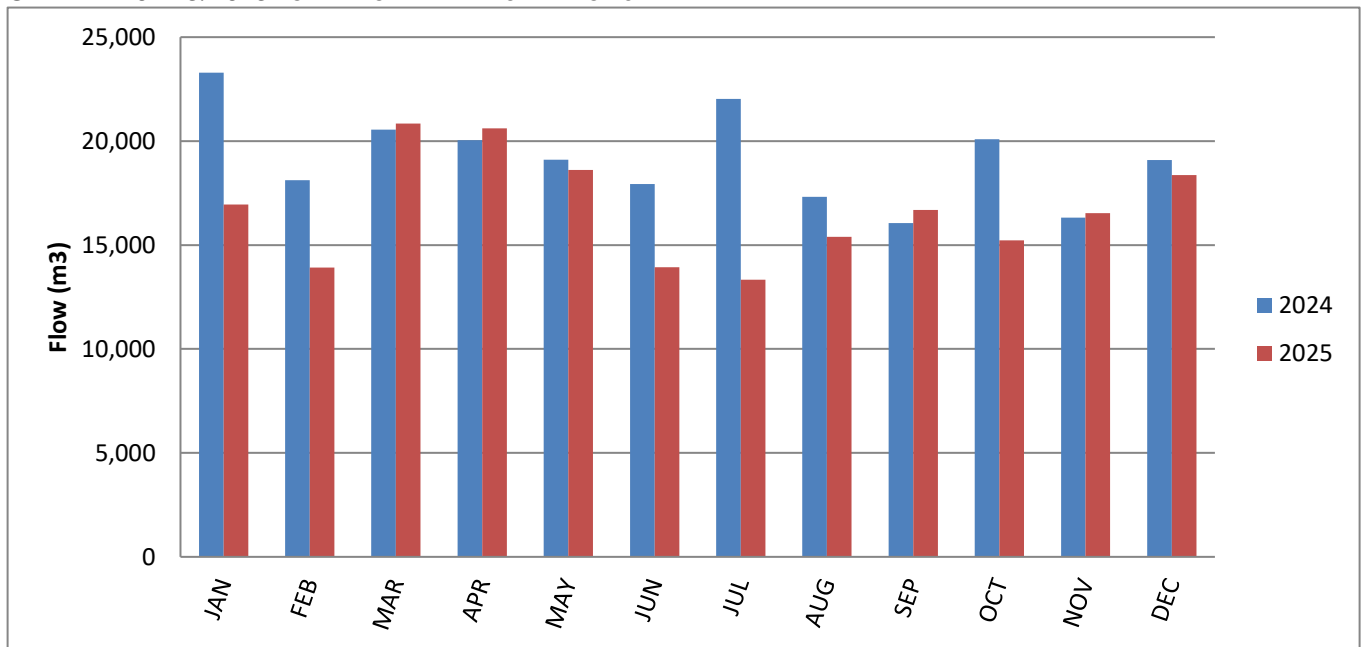
	April	May	June		July		Aug		Sept	Oct	Nov	Dec
CBOD	<4	<4	<4	<4	<4	<4	<4	<4	<4	<4	<4	<4
TSS (mg/L)	10	9	13	17	41	17	7	5	9	3	13	3
Total	0.043	0.040	0.065	0.096	0.154	0.010	0.080	0.040	0.050	0.059	0.042	0.016
NH <sub>3</sub> + NH <sub>4</sub>	<0.1	<0.1	0.1	<0.1	<0.1	<0.1	<0.1	<0.1	<0.1	<0.1	<0.1	<0.1
Unionized	<0.001	0.003	0.004	0.007	0.003	<0.005	<0.005	<0.004	<0.003	<0.004	<0.003	<0.001
E. coli	43	50	86	118	236	548	190	28	185	22	33	46
Dissolved	13.54	11.49	8.74	8.20	8.18	8.28	10.54	11.27	9.94	12.28	14.10	14.55
Field pH	8.05	8.31	8.22	8.21	8.43	9.29	8.29	8.40	8.36	8.46	8.51	7.21
Field	5.00	13.70	19.40	21.20	22.90	24.10	25.40	17.10	15.50	13.00	6.80	0.80



GRAPH 1 – 2025 AVERAGE DAILY AND MONTHLY PEAK FLOWS



GRAPH 2 – 2024 & 2025 TOTAL MONTHLY EFFLUENT FLOWS



During the 2025 reporting period, the flows were above the Annual Average Daily Influent Flow capacity for the month of April. The high flows were caused by above freezing temperatures, a rainfall event and subsequent snowmelt which increased inflow and infiltration into the sanitary collection system. No bypass occurred due to this high flow event. There was one bypass event in December of 2025, further details can be found in *Appendix C – 2025 Bypass Notification to MECF*.

**(III) OPERATING PROBLEMS ENCOUNTERED**

In the month of September, a faulty dissolved oxygen (DO) probe on the aeration blower was found. A single sample result of 3.2 mg/L, taken on September 25<sup>th</sup>, caused the monthly average effluent concentration for total

ammonia, to exceed the ECA limit of 1.2 mg/L. The faulty probe put the aeration blower into a cycle of ramping up and down. This cycling lowered the dissolved oxygen concentrations in the aeration basin, inhibiting the nitrification process. Upon discovery of the faulty probe a new one was placed on order and the probe was bypassed to allow the aeration blower to run at a steady rate. The new probe was installed on October 23. Additional samples were collected during this event to ensure that the facility was operating in accordance to the ECA objective and limits. Further event details can be found in *Appendix B, Effluent Exceedance Notifications to MECP*.

On April 4, 2025 a wet weather event caused the plant to experience “Outside Normal Operating Conditions”. This event consisted of above freezing temperatures, a rainfall event and subsequent snowmelt which increased inflow and infiltration into the sanitary collection system. Additional samples were collected during this event to closely monitor plant performance, these results may be found in *Appendix D- Additional Sampling*. This event caused higher effluent quality Ammonia results, however the plant performed well and Ammonia remained below the plant objective for the month of April. No bypass occurred due to this rain event.

In the month of December, the St. George WPCP experienced several challenges. On December 18 an extended power loss event occurred which lasted approximately 8 hours. During this time the main aeration screw blower was out of service for maintenance and the emergency generator can only power one of the two aeration coarse blowers. When power was restored the second coarse blower was started, however, immediately after the power loss event a process imbalance was apparent. This plant upset was confirmed through in-house lab results, showing TSS and TAN were elevated. On December 30 in-house results were below ECA limits, confirming a return to normal process operations.

Additionally, the Ferric chloride dosing system experienced several issues throughout December. The first problem was identified after the weekend of December 14–15, when operators suspected a partial blockage in the dosing system. Upon inspection, they observed the pump was struggling, and the dosing lines were flushed to clear the obstruction. The Ferric chloride pump again showed signs of difficulty on December 18. On December 19, operators disassembled the pump, cleaned the check valve, and returned it to service. However, on December 21, the dosing lines required another flush due to another partial blockage. On December 22, the Ferric chloride pump head was replaced, the lines and strainers were flushed, and the check valves were cleaned. A temporary chemical storage tank was also set up that day to feed the dosing pump while the permanent tank was flushed and cleaned to remove sediment buildup contributing to the recurring blockages. On December 27, the pump again struggled due to additional sediment accumulation. Operators cleaned both check valves and re-primed the system. The Ferric chloride dosing pump ultimately failed on January 1, 2026, and became inoperable. Operations installed a spare pump to maintain treatment, and a replacement pump was ordered. On January 3, 2026, a new Ferric chloride dosing pump was installed, resolving the issue.

These two December events contributed to a non-compliance for Total phosphorous. Further event details can be found in *Appendix B, Effluent Exceedance Notifications to MECP*.

**(IV) MAINTENANCE PERFORMED ON MAJOR EQUIPMENT, STRUCTURES, EQUIPMENT**

TABLE 15– UPGRADES/MAINTENANCE

Date	Work Performed	Status
------	----------------	--------

Jan 23	Filter bridge taken out of service for part of day to repair backwash boot	Completed
April 3	Disassembled and reassembled Return Activated Sludge (RAS) line to clear blockages	Completed
May 6	Changed oil and filter on aeration screw blower	Completed
May 9	Repaired RAS elbow joint, the arm had fallen off as Victaulic groove had worn out, reversed the elbow to utilize the good Victaulic groove	Completed
May 30	Clarifier scum scraper broke off and fell into clarifier. Diverted flows and pumped down clarifier to retrieve scraper assembly. Scraper was replaced with a new unit on July 31st. While the scraper was removed, operators skimmed the debris with a net.	Completed
June 10	Contractor on site completing maintenance on aeration screw blower	Completed
July 31	Contractor on site to repair worn sand filter bridge tracks and wash boot, also installed clarifier scum scraper assembly	Completed
Aug 1	Adjust scum scarper after repairs to perform more efficiently	Completed
Aug 25- Sept 12	Aeration screw blower taken out of service Aug 25th due to oil pressure alarm, coarse blowers 2 & 3 were put in service until repairs made on Sept 12th. Screw blower maintenance completed on Sept 12th included: revised alarm delay, change oil and filter, replaced belt and checked air filter. Screw blower back in service Sept 12th.	Completed
Sept 18- Nov 4	Locked aeration DO probe reading to 1.17mg/L as probe kept losing communication with screw blower, causing insufficient DO. Replacement DO probe ordered and installed on October 23rd. Further work to adjust configuration with blower scheduled for November. Aeration screw blower taken out of service to configure new DO probe for 3 hrs. on Nov 4th. Aeration coarse blowers 2 & 3 put into service during this time. DO probe configuration with screw blower completed and tested November 4th, screw blower back in service.	Completed
Oct 20	Contractor completed annual generator inspections	Completed
Oct 28	Technical Standards and Safety Authority (TSSA) completed generator inspection	Completed
Oct 30	Contractor replaced skimmer rubber on clarifier arm	Completed
Nov 15	Leak discovered on aeration line of digester 1, closed valve until repair in the spring. Secondary line to digester still operational and digester functioning normally.	Completed
Dec 15	Contractor completed aeration screw blower maintenance and determined blower system overhaul required. Aeration coarse blowers 2 & 3 in service until repairs can be arranged in February 2026. Core was removed for overhaul and repair on Feb 12th, this work will continue in 2026.	In Progress
Dec 19	Maintenance was undertaken on the ferric chemical dosing system due to poor pump performance, flushed lines and cleaned strainers, system put back into operation.	Completed
Dec 22	Maintenance was undertaken on the ferric chloride dosing system due to poor pump performance, set up temporary chemical storage tank as main tank is partially clogged. Replaced ferric chloride pump diaphragm head. System put back into operation. See Operating Problems Encountered above for more details.	Completed
Dec 27	Maintenance was undertaken on the ferric chloride dosing system due to poor pump performance. Replaced Ferric chloride pump diaphragm head. Flushed some sediment out of original Ferric chloride storage tank. Temporary Ferric chloride storage tank still in use until emptied.	Completed

#### (V) EFFLUENT QUALITY ASSURANCE AND CONTROL MEASURES

Considerable effort goes into monitoring the characteristics of the St. George WPCP influent, effluent and intermediate process streams. This monitoring provides essential data for process optimization by

operational staff and is required to meet the ECA monitoring and reporting conditions. Grab and composite samples are routinely collected and analyzed through in-house analysis.

The influent is monitored for CBOD<sub>5</sub>, TSS, TP and TKN. Effluent quality assurance is evaluated by monitoring parameters and changes throughout the plants processes. The operators monitor the aeration basin by performing weekly tests on the mixed liquor. These tests include dissolved oxygen, pH, temperature, settling tests and Mixed Liquor Suspended Solids (MLSS). As well, monitoring of the chemical dosages. Data collected from these tests provide valuable information to the operators to make the appropriate adjustments in the treatment process and take corrective actions before the plant reaches its effluent limits.

Table 16 below summarizes and compares the 2024 to 2025 average monthly concentrations of influent parameters for CBOD<sub>5</sub>, TSS, TP and TKN. All parameters show a reduction for the 2025 reporting period.

TABLE 16 – INFLUENT AVERAGE MONTHLY CONCENTRATIONS

	<b>2024 CBOD<sub>5</sub> (mg/L)</b>	<b>2025 CBOD<sub>5</sub> (mg/L)</b>	<b>2024 TSS (mg/L)</b>	<b>2025 TSS (mg/L)</b>	<b>2024 TP (mg/L)</b>	<b>2025 TP (mg/L)</b>	<b>2024 TKN (mg/L)</b>	<b>2025 TKN (mg/L)</b>
<b>January</b>	233	276	219	331	3.70	4.84	39.10	42.07
<b>February</b>	238	154	139	159	5.20	3.71	46.80	41.10
<b>March</b>	210	71	317	71	5.04	2.55	39.40	31.10
<b>April</b>	195	122	129	106	5.09	2.96	52.40	32.50
<b>May</b>	120	133	212	280	3.19	4.85	35.50	42.10
<b>June</b>	253	137	478	55	7.38	3.93	57.60	38.35
<b>July</b>	130	194	238	186	3.99	4.05	29.80	38.30
<b>August</b>	248	141	226	224	6.40	4.18	52.25	38.05
<b>September</b>	187	157	255	189	3.98	5.71	35.15	38.25
<b>October</b>	170	142	364	342	6.80	4.83	59.80	44.10
<b>November</b>	278	112	233	66	5.27	3.27	41.10	40.30
<b>December</b>	316	115	383	68	7.30	4.03	65.63	39.80
<b>Average</b>	<b>215</b>	<b>146</b>	<b>266</b>	<b>172</b>	<b>5.28</b>	<b>4.08</b>	<b>46.21</b>	<b>38.84</b>

TABLE 17 - INFLUENT- HISTORICAL COMPARISON

<b>Parameter</b>	<b>2024 Average Concentration (mg/L)</b>	<b>2025 Average Concentration (mg/L)</b>	<b>% Difference</b>
CBOD <sub>5</sub> (mg/L)	215	146	-32%
Total Suspended Solids (mg/L)	266	172	-35%
Total Phosphorus (mg/L)	5.28	4.08	-23%
Total Kjeldahl Nitrogen (mg/L)	46.21	38.84	-16%

Table 18 below summarizes the 2025 Per Capita Flows and Loadings.

TABLE 18– 2025 PER CAPITA FLOWS AND LOADINGS

<b>Parameter</b>	<b>Units</b>	<b>Value</b>	<b>Standard</b>
*Per Capita Flow	L/d per person	165	350-500
Peak Day: Annual Average Flow		2.42	2.5->3.5
Per Capita BOD <sub>5</sub>	g/d per person	34.8	80
Per Capita TSS	g/d per person	28.5	90

Per Capita TKN	g/d per person	6.40	13
Per Capita TP	g/d per person	0.68	3.3
TSS: BOD <sub>5</sub>	--	0.82	0.80-1.2
TKN: BOD <sub>5</sub>	--	0.18	0.1-0.2

\*Population estimated to be 3,354 as per 2021 Stats Canada

## (VI) CALIBRATIONS

In house meters for pH and dissolved oxygen are calibrated by OCWA operators as per manufacturer's instructions. Annual calibrations were performed on July 4, 2025 for the final effluent flow meter. The meter is operating within the allotted +/- 15% error. Third party calibration records are included in *Appendix A*.

## (VII) MEETING THE EFFLUENT OBJECTIVES OF CONDITION 6

In 2025, there was one (1) objective exceedance and one (1) limit exceedance at the St. George WPCP. During the month of September, there was one (1) monthly average total ammonia nitrogen objective exceedance. Refer to *Section B: Effluent Monitoring Data*. During the month of December there was (1) monthly average Total Phosphorous limit exceedance. Notification of this exceedance was made to MECP and further details can be found in *Appendix B*. There were no increasing trends in the deterioration of the final effluent quality.

The Annual Average Daily Influent Flow ECA rated treatment capacity of the St. George WPCP was exceeded on one (a) occasion in 2025. In April the daily flow exceeded 1,300 m<sup>3</sup>/ day due to significant rain events. Plant performance was not impacted during these high flow events. The annual average influent flow was 57.44% of the rated capacity in 2025.

Design objectives were not exceeded more than 50% of the time in 2025 and there were no trends in deterioration of final effluent quality. In addition, the average influent flow has not reached or exceeded 80% of the rated capacity.

## (VIII) Sludge/ Solids Handling and Disposal

The St. George WPCP liquid biosolids are stored onsite in the digestion tank and then trucked to the Paris WPCP. The biosolids are dewatered at the Paris WPCP through a centrifuge and transferred to the biosolids storage facility located at the Closed Paris Landfill site. The biosolids are then removed and utilized on agricultural land as a conditioning agent. The agricultural lands that utilize the biosolids have provincial approval through the Nutrient Management Act, Ontario Regulation 267/03. The quality, quantity, method of application and rate of application is outlined in a Non-Agricultural Source Materials (NASM) Plan which is prepared for each agricultural property that utilizes biosolids and is part of the approval.

TABLE 19– SLUDGE/BIOSOLIDS MONITORING

<i>Final effluent</i>	<i>Sample Type</i>	<i>Minimum Frequency</i>
Total Solids	Grab	Annually
Total Phosphorus	Grab	Annually
Total Ammonia Nitrogen	Grab	Annually
Nitrate as Nitrogen	Grab	Annually

Metal Scan (Arsenic, Cadmium, Cobalt, Chromium, Copper, Lead, Mercury, Molybdenum, Nickel, Potassium, Selenium, Zinc)	Grab	Annually
---	------	----------

Table 20 below is a tabulation of the sludge volumes generated in 2025.

TABLE 20– ST. GEORGE TOTAL LIQUID BIOSOLIDS HAULAGE

<i>Month</i>	<i>Amount (m<sup>3</sup>)</i>
January	215
February	166
March	203
April	295
May	390
June	270
July	355
August	310
September	133
October	308
November	220
December	176
<b>Annual Total</b>	<b>3,041</b>

Anticipated volumes of sludge to be generated in 2026 are expected to be similar to the 2025 reported volumes. It is estimated that in 2026 3,500 m<sup>3</sup> of sludge will be generated.

Table 21 shows the liquid aerobic biosolids for the St George WPCP. This sample is collected from the aerobic digester on a monthly basis for monitoring purposes but is only required annually in accordance with the ECA.

TABLE 21– LIQUID AEROBIC BIOSOLIDS

	<i>Total Phosphorus (mg/L)</i>	<i>Total Solids (mg/L)</i>	<i>Ammonia + Nitrate (mg/L)</i>	<i>Nitrite (mg/L)</i>	<i>Nitrate (mg/L)</i>
January	438	16,800	41.4	<3	<3
February	296	20,900	64.8	3	30

<b>March</b>	592	23,000	39.9	<3	<3
<b>April</b>	259	23,100	41.8	<3	<3
<b>May</b>	443	19,100	143	<3	<3
<b>June</b>	173	11,900	19.9	<3	<3
<b>July</b>	282	14,200	47.5	<3	<3
<b>August</b>	356	14,700	203	<3	<3
<b>September</b>	468	15,700	37.7	<3	<3
<b>October</b>	466	17,500	54.1	<3	<3
<b>November</b>	414	13,000	127	<3	<3
<b>December</b>	410	18,200	115	<3	<3
<b>Average</b>	<b>383</b>	<b>17,501</b>	<b>66.8</b>	<b>&lt;3</b>	<b>5.45</b>

TABLE 22– METAL CONCENTRATIONS OF LIQUID AEROBIC BIOSOLIDS (MG/L)

	<b>As</b> <i>mg/L</i>	<b>Cd</b> <i>mg/L</i>	<b>Co</b> <i>mg/L</i>	<b>Cr</b> <i>mg/L</i>	<b>Cu</b> <i>mg/L</i>	<b>Hg</b> <i>mg/L</i>	<b>K</b> <i>mg/L</i>	<b>Mo</b> <i>mg/L</i>	<b>Ni</b> <i>mg/L</i>	<b>Pb</b> <i>mg/L</i>	<b>Se</b> <i>mg/L</i>	<b>Zn</b> <i>mg/L</i>
<b>Limits</b>	<b>1.7</b>	<b>0.34</b>	<b>3.4</b>	<b>28</b>	<b>17</b>	<b>0.11</b>	<b>140</b>	<b>0.94</b>	<b>4.2</b>	<b>11</b>	<b>0.34</b>	<b>42</b>
<b>January</b>	<0.1	0.009	0.04	1.2	5.1	0.008	88	0.12	0.47	0.2	<0.1	8
<b>February</b>	<0.1	0.006	0.04	0.4	4.9	0.007	76	0.07	0.36	0.2	<0.1	4
<b>March</b>	<0.1	0.015	0.06	2.1	6.8	0.007	99	0.16	0.72	0.3	<0.1	10
<b>April</b>	<0.1	0.007	0.03	0.94	2.9	0.002	66	0.08	0.32	<0.1	<0.1	4
<b>May</b>	<0.1	0.008	0.04	1.4	4.6	0.003	72	0.12	0.50	0.1	<0.1	7
<b>June</b>	<0.1	0.005	0.02	0.6	1.9	0.002	38	<0.05	0.21	<0.1	<0.1	3
<b>July</b>	<0.1	0.006	0.03	1.1	3.3	0.006	48	0.09	0.45	<0.1	<0.1	5
<b>August</b>	<1.0	0.050	0.10	1.8	5.0	0.010	51	0.50	0.70	0.2	<0.1	7
<b>September</b>	<0.1	0.010	0.09	1.8	5.8	0.005	56	0.16	0.65	0.2	<0.1	8
<b>October</b>	<0.1	0.012	0.09	1.7	6.3	0.005	52	0.13	0.62	0.3	<0.1	8
<b>November</b>	<0.1	0.009	0.08	1.4	6.3	0.006	52	0.12	0.53	0.2	<0.1	7
<b>December</b>	<0.1	0.011	0.07	1.3	5.7	0.015	59	0.10	0.50	0.2	<0.1	7
<b>Average</b>	<b>0.10</b>	<b>0.013</b>	<b>0.06</b>	<b>1.35</b>	<b>5.06</b>	<b>0.0067</b>	<b>62.82</b>	<b>0.15</b>	<b>0.52</b>	<b>0.19</b>	<b>0.1</b>	<b>6.73</b>

TABLE 23 – METAL WEIGHTS AEROBIC BIOSOLIDS (MG/KG)

	<b>As</b> <i>mg/k</i> <b>g</b>	<b>Cd</b> <i>mg/k</i> <b>g</b>	<b>Co</b> <i>mg/kg</i>	<b>Cr</b> <i>mg/kg</i>	<b>Cu</b> <i>mg/kg</i>	<b>Hg</b> <i>mg/k</i> <b>g</b>	<b>K</b> <i>mg/k</i> <b>g</b>	<b>Mo</b> <i>mg/k</i> <b>g</b>	<b>Ni</b> <i>mg/k</i> <b>g</b>	<b>Pb</b> <i>mg/k</i> <b>g</b>	<b>Se</b> <i>mg/k</i> <b>g</b>	<b>Zn</b> <i>mg/k</i> <b>g</b>
<b>Limits</b>	<b>170</b>	<b>34</b>	<b>340</b>	<b>2800</b>	<b>1700</b>	<b>11</b>	<b>13</b> <b>000</b>	<b>94</b>	<b>420</b>	<b>1100</b>	<b>34</b>	<b>4200</b>
<b>January</b>	5.95	0.536	2.38	71.43	303.57	0.48	5238	7.14	27.98	11.90	5.95	476

<b>February</b>	4.78	0.287	2.38	21.05	234.45	0.33	4524	3.35	17.22	9.57	4.78	191
<b>March</b>	4.35	0.652	2.61	91.30	295.65	0.30	5893	6.96	31.30	13.04	4.35	435
<b>April</b>	4.33	0.303	1.30	40.69	125.54	0.09	3928	3.46	13.85	4.33	4.33	173
<b>May</b>	5.24	0.419	2.09	73.30	240.84	0.16	4286	6.28	26.18	5.24	5.24	366
<b>June</b>	12.74	0.623	2.49	71.07	236.91	0.25	2262	6.23	26.18	12.47	12.47	374
<b>July</b>	7.04	0.423	2.11	77.46	232.39	0.42	2857	6.34	31.69	7.04	7.04	352
<b>August</b>	6.80	3.401	6.80	122.45	340.14	0.68	3035	34.01	47.62	13.61	6.80	476
<b>September</b>	6.37	0.637	5.73	114.65	369.43	0.32	3333	10.19	41.40	12.74	6.37	510
<b>October</b>	5.71	0.764	5.73	108.28	401.27	0.32	3095	8.28	39.49	19.11	6.37	510
<b>November</b>	7.69	0.573	5.10	89.17	401.27	0.38	3095	7.64	33.76	12.74	6.37	445
<b>December</b>	5.49	0.701	4.46	82.80	363.06	0.96	3512	6.37	31.85	12.74	6.37	445
<b>Average</b>	<b>6.35</b>	<b>0.777</b>	<b>3.60</b>	<b>80.31</b>	<b>295.38</b>	<b>0.39</b>	<b>3755</b>	<b>8.86</b>	<b>30.71</b>	<b>11.21</b>	<b>6.37</b>	<b>396</b>

NOTE: Metal Concentrations for the anaerobic sludge were converted from mg/L to mg/kg to coincide with the limits acquired from the Nutrient Management Act Reg 267/03 Section 98 and Schedule 5 Table 2 "Standards for Regulated Metals in Materials Applied to Land that are Sewage Biosolids"

To satisfy Section D of ECA 2214-BNBM6Z (Dated April 26, 2020), Aerobic Sludge and Dewatered Aerobic Biosolids are required to be sampled for the parameters listed in Table 4 of this report on an annual basis. To comply with the land application ECA 1603-4LGJBN, OCWA collects monthly samples to provide further data in preparation for land application. There are no limits currently in place for Aerobic Sludge, only the requirement to sample. Table 23 compares St. George WPCP Aerobic Dewatered Biosolids metal weights to the limits of the Nutrient Management Act Ontario Regulation 267/03, Section 98 and Schedule 5 Table 2 "Regulated Metals Content of NASM". No metal concentration exceedances occurred in the 2025 reporting period.

## (IX) SUMMARY OF COMPLAINTS RECEIVED

There were no community complaints received for the St. George WPCP during the 2025 reporting period.

## (X) SUMMARY OF BY-PASS, SPILL OR ABNORMAL DISCHARGE EVENTS

A Bypass is the diversion of sewage around one or more treatment processes within the WPCP. An Overflow is the discharge to the environment from designed location(s) other than the approved effluent discharge location. A bypass or overflow can occur during heavy precipitation and/or snowmelt events when the raw flow exceeds the rated capacity or if a treatment component is out of service for maintenance purposes.

There was one bypass event that occurred the St. George WPCP in 2025. The bypass occurred on December 28, 2025 due to above average temperatures and a subsequent heavy rainstorm event. The ECA requires additional sampling for the WPCP when the plant experiences an overflow or bypass event.

TABLE 24 – BYPASS EVENT SUMMARY

Date	Bypass/Overflow	Volume (m <sup>3</sup> )
December 28, 2025	Bypass of tertiary sand filter	35

Bypass sample results are included in the final effluent results. All applicable notifications have been made and samples collected as required by the Environmental Compliance Approval (ECA) as seen in Table 25 below. Notification of this bypass was made to the MECP and can be found with bypass lab results in *Appendix C- Bypass Notification to MECP*.

TABLE 25 – DECEMBER MONTHLY EFFLUENT AVERAGE RESULTS

Parameter	Limit (mg/L)	Month	Monthly Average Effluent Concentration (mg/L)
CBOD <sub>5</sub>	15	December	3.25
TSS	15	December	2
TP	0.42	December	0.54
TAN	1.2 (May-Oct)	December	0.45

There were no Overflow events that occurred at the St. George WPCP in 2025.

An “*Outside Normal Operating Condition*” event occurred on April 4, 2025, during a wet weather event where the raw influent flow was above the ECA rated capacity of 1,300m<sup>3</sup>. Conditions included above-freezing temperatures, rainfall, and subsequent snowmelt, which increased inflow and infiltration to the sanitary collection system. Additional sampling was conducted during this event to closely monitor plant performance; the results are included in *Appendix D – Additional Sampling*. This event resulted in higher-than-normal ammonia concentrations in the effluent; however, the treatment plant performed well, and ammonia levels remained below the plant’s monthly objective for April. No bypass occurred as a result of this rain event.

**(XI) NOTICE OF MODIFICATIONS TO SEWAGE WORKS**

There were no modifications to the St George WPCP that required a Notice of Modification form to be submitted for 2025.

**(XII) SUMMARY OF EFFORTS MADE TO ACHIEVE CONFORMANCE WITH F-5-1 “Determination of Treatment Requirements for Municipal and Private Sewage Treatment Works”**

The St. George secondary and post-secondary treatment is provided by an aeration tank and sand filter system with final disinfection provided by sodium hypochlorite. Supplementary phosphorus removal is also achieved with the addition of ferric chloride. The treatment components are capable of producing effluent quality that exceeds the effluent design objectives specified in F-5-1. The St. George WPCP is required to achieve higher effluent quality standards than the effluent guideline criteria as specified in the ECA.

There were no bypasses or overflow events in the collections system in 2025.

In 2020, the County of Brant installed 4 SmartCovers™ liquid level manhole monitors in the St. George sanitary collection system. These smart covers are located on strategic manholes that essentially section the community of St. George into 4 monitoring zones:

- STG01063 (North East Area)
- STG01030 (West Side)
- STG00126 (Central Corridor)
- STG01106 (Combination of the 3 above)

These Smart Covers are capable of measuring liquid levels in the collection system, trending data, and allow for further interpretation and analysis to better quantify Inflow & Infiltration (I&I) impacts after rain events along with pin pointing locations where I&I is more pronounced. The information gathered will allow for interpretation of results and

applying this knowledge in the field to correct issues with manholes/address drainage inconsistencies. The initial costs for these monitors were approximately \$25,000 and \$2,500 annually thereafter.

CCTV flushing and camera inspections are completed annually (16.7% of the St. George collection system per year for 6 years when the entire system has been completed) – annual cost of the CCTV inspection program is approximately \$18,000.

**(XIV) CHANGES OR UPDATES FOR CONSTRUCTION AT PLANT**

R.V Anderson and Associates has been retained to complete the detailed design for the St. George WPCP upgrade and expansion. Construction will begin in 2026.

**(XV) SUMMARY OF DEVIATION FROM MONITORING SCHEDULE**

Deviations from the 2025 sample calendar are outlined in Table 26 below. Refer to *Appendix E Annual Sample Calendar* for the 2026 sampling schedule.

TABLE 26 – DEVIATIONS FROM MONITORING SCHEDULE

Date	Reason
Feb 20	Additional effluent samples were taken to ensure compliance was being maintained while dealing with chlorine pump/dosing issues
Apr 4	Additional effluent samples were taken due to outside of normal operation conditions caused by wet weather event
Sept 30	Additional effluent samples were taken to ensure compliance was being maintained after the aeration blower DO sensor faulted, causing DO to decrease in the aeration which inhibited nitrification process, resulting in high ammonia
Dec 30	Moved compliance sampling to December 30 from January 1, 2026 to ensure biweekly sampling requirement were being met and that the samples would arrive at the lab within holding times for analysis

## ***APPENDIX A***

### **CALIBRATION RECORD**

# Certificate of Calibration

# Open Channel Flow Meter



595758 Hwy 59 North RR6  
 Woodstock, ON. N4S 7W1  
 Ph#: 519-535-9835  
 Email: Jfranssen@jbfcontrols.com

Verification  
 Calibration  
 Calibration Date: July 2, 2025  
 Due Date: July 2, 2026

**Client Information**

Ontario Clean Water Agency - Southwest Region / Paris Cluster  
 120 Race Street,  
 Paris, Ontario, N3L 3X2

SCADA Reading Confirmation		
Instrument	SCADA	% Deviation
5.650	5.650	0.000%

Project: OCWA202201	Manufacturer: Siemens	As Found: 5.650 m3/hr
Client: OCWA	Transmitter Model: OCM III	As Left: 5.650 m3/hr
Client Contact: Ben Madill	Transmitter S/N: PBD/BD120237 XV	Totalizer Reading: 3203972 m3
Location: Paris	Transducer Model: XRS-5	K-Factor: N/A
Facility: St. George WWTP	Transducer S/N: N/A	Current Output (mA): 4 to 20
Technician: Jeremy Franssen	OCM Device Type: Rectangular Weir	Flow Range: 0 to 125.0000
Meter Purpose: Effluent Flow	OCM Device Size: 0.3m	Units: m3/hr
Application: Waste Water	Tag Number: FIT 386800	Accuracy: 2.00% Reading

mA Output						
Reference: mA	As Found: mA	% Deviation	As Left: mA	% Deviation	PASS/FAIL	
4.000	4.021	0.131%	4.021	0.131%	PASS	
8.000	8.016	0.100%	8.016	0.100%	PASS	
12.000	12.009	0.056%	12.009	0.056%	PASS	
16.000	16.004	0.025%	16.004	0.025%	PASS	
20.000	19.999	0.006%	19.999	0.006%	PASS	

Flow Rate Output							
Reference:	Measured:	Calc. Flow	Display Reading	Calculated:	Measured:	% Deviation	Result
cm	cm	m3/hr	m3/hr	mA	mA		
1.960	2.000	5.448	5.650	4.723	4.822	0.263%	PASS

Parameters			Parameters		
P1	Dimensional units	cm	P45	Low Flow Cut-off	0
P2	Temperature Units	Celsius	P46	Range at Zero Head	75.5
P3	Primary Element	3680 TPR Weir	P47	Blanking Distance	30.48264
P4	Method of Calculation	Absolute			
P5	Flow Rate Units	m3/hr			
P6	Flow at Max Head	125			
P7	Height of Max Head	15.19999			
U0	Approch Width B	92 cm			
U1	Crest Width B	30.39999cm			
U2	Crest Height p	220 cm			
P24	mA Assignment	Flow rate			
P26	mA Span	4-20mA			
P32	Totalizer Multiplier	x1			
P42	Head Determination	OCM III			

Remarks: Verification of Flow Meter Parameters. Confirm, OK.  
 Verification of 4-20 mA Output, Confirm, OK.  
 Verification of Instrument to SCADA Readings, Confirm, OK.  
 Cleaned and Certified

Ratiometric Calculation  
 $Q = KLH^3$   
 $Q = 6618(0.3)(0.0196)^{1.5}$   
 $Q = 5.448 \text{ m3/hr}$

Calibration Standards Used				
Description	Serial n°	Certificate n°	Calibration Date	Due Date
Fluke 705 Loop Calibrator	4624185	59234-B	April 2025	April 2026

Calibration standards used in the certificate are traceable to the National Institute of Standards and Technology (NIST).

Service Technician: Jeremy Franssen  
 Signature

This certificate shall not be reoroduced except in full.

Version 1.0

## ***APPENDIX B***

### **2025 EFFLUENT EXCEEDANCE NOTIFICATIONS TO MECP**



OCWA Location: Paris Cluster  
 Address: 120 Race St  
 City: Paris, ON, Postal Code: N3L #X2  
 Tel: 519-442-3255 Fax: 519-442-2616

## NOTIFICATION OF NON-COMPLIANCE

October 10, 2024

Ivanna Okroukh  
 MECP District Guelph Office  
 1 Stone Road West  
 Guelph, ON N1G 4Y2

**Re: Notification of Non-compliance with ECA Effluent Limit at St. George WPCP**

This is a notification of non-compliance with an effluent limit for the St. George WPCP submitted in accordance with terms and conditions of Environmental Compliance Approval #2214-BNBM6Z, and provisions of the *Ontario Water Resources Act* and *Environmental Protection Act*. This written notice confirms the verbal notification provided on October 8th, 2025 at 13:55pm.

The following effluent parameter(s) were exceeded:

Parameter	Date of Non-Compliance (yyyy-mm-dd)	Type of Limit	Type of Sample	Result (Specify Units)	ECA Effluent Limit
Total Ammonia Nitrogen	2025-10-08	Monthly Average	Composite	1.33 mg/L	1.2 mg/L

**Comments/Actions Taken:**

The monthly average total ammonia nitrogen (TAN) concentration was exceeded during the month of September with a result of 1.33mg/L, from the average of the 3 samples taken on September 11, 25, and 30<sup>th</sup>. The exceedance was caused by the sample collected on September 25<sup>th</sup>, which had a result of 3.20 mg/L. This elevated single sample result was caused by the failure of the DO sensor on the screw blower, a few days before September 25<sup>th</sup>, which put the blower into a cycle of ramping up and down. The cycling lowered dissolved oxygen concentrations in the aeration basin, inhibiting the nitrification process.

The blower DO sensor was bypassed to run at a steady rate, to produce higher dissolved oxygen concentration in the aeration basin. An additional sample was taken on September 30<sup>th</sup> to ensure that the plant was operating within the ECA objectives and limits. The TAN results from September 30<sup>th</sup> was 0.70mg/L, confirming that that they system was again meeting the ECA requirements. A replacement DO sensor is on order and will be installed upon receiving it.

If you have any questions or concerns, please contact me at 226-387-1292.

Sincerely,

Meagan Lowden  
 Process & Compliance Technician, OCWA  
 Southwest Hub – Paris Cluster

- cc: Sam Sianas - Regional Hub Manager, OCWA  
 Stephanie Simpson - Safety, Process & Compliance Manager, OCWA  
 Ben Madill - Senior Operations Manager, OCWA  
 Matthew D'Hondt, Solids Waste/Wastewater Manager, County of Brant



OCWA Paris Cluster  
 120 Race Street  
 Paris, ON N3T 3X2  
 Tel: 519-442-3255

## NOTIFICATION OF NON-COMPLIANCE

January 15, 2026

Ms. Ivanna Okroukh  
 Ministry of the Environment, Conservation and Parks  
 1 Stone Road West, Floor 4SW  
 Guelph, Ontario N1G 4Y2

**Re: Notification of Non-compliance with ECA Effluent Limit**

This is a notification of non-compliance with an effluent limit for the St. George Water Pollution Control Plant submitted in accordance with terms and conditions of Environmental Compliance Approval (ECA#7620-97CPND), and provisions of the *Ontario Water Resources Act* and *Environmental Protection Act*. This written notice confirms the verbal notification provided on January 9<sup>th</sup>, 2020.

The following effluent parameter was exceeded:

Parameter	Date of Non-Compliance (yyyy-mm-dd)	Type of Limit	Type of Sample	Results	ECA Effluent Limit
Total Phosphorus	2025-12-31	monthly mean	24h Composite	0.54mg/l	0.42mg/l

**Comments/Actions Taken:**

The St. George WPCP requires a 24-hour composite biweekly effluent sample as per Table 5 in the ECA. The 4 samples collected for the month of December were on December 4<sup>th</sup>, 18<sup>th</sup>, 28<sup>th</sup> and 30<sup>th</sup> 2025. It should be noted the sample taken on December 28<sup>th</sup> was additional due to a bypass event. The Total Phosphorus results were 0.22mg/L, 0.94mg/L, 0.69mg/L, and 0.32mg/L respectively. The monthly mean exceeded the ECA limit of 0.42mg/l with a value of 0.54mg/l.

On Thursday December 18th, there was an extended power loss from 4:05 am to 12:10 pm, a total of approximately 8 hours. During this time, the main screw blower was offline for maintenance, and the emergency generator is only able to power one of the two backup coarse blowers. When power was restored, the operator started the additional backup coarse blower. This resulted in insufficient dissolved oxygen (DO) in the aeration basin. Immediately following the low DO event, there were signs of a process imbalance as Total Suspended Solids (TSS) increased and Total Nitrogen Ammonia (TAN) increased. It should be also be noted that the return activated sludge (RAS) pump is actuated by air, the reduced air supply in the aeration basin meant the RAS pump was unable to keep up for this time period.

Additionally, the Ferric chloride dosing system had been experiencing multiple problems. The first issues were noticed after the weekend of December 14/15<sup>th</sup> where we had to flush the lines to clear the blockage. The pump then stopped again on the 18<sup>th</sup> at some point and the pump



was repaired on the 19<sup>th</sup>. Then on December 21<sup>st</sup> the lines were flushed again and dosing restarted. On December 22<sup>nd</sup> the pump head was replaced and the lines and strainers were flushed and the check valves were cleaned, then later on the 22<sup>nd</sup> a temporary dosing system was set up so the tank could be flushed to eliminate the sediment issues. On December 26<sup>th</sup> the temporary pump had faulted and had to be restarted. On January 1<sup>st</sup> another temporary pump was installed which has been working without any issues since.

It is the combination of these factors along with the bypass event, that led to the process imbalance causing the process upset and contributing to the monthly Total Phosphorous exceedance.

Best efforts were employed to mitigate these concerns and restore process balance and operation. As outlined above, the effluent TP from December 30<sup>th</sup> was below the ECA limit, showing a return to normal process from the plant upset and bypass event. We also want to note that the in-house TP results for January 8<sup>th</sup> were 0.18 mg/L. The St. George WPCP continues to be closely monitored with in-house sampling combined with the above efforts to maintain process operations.

If you have any questions or concerns, please contact me at 519-761-8514.

Sincerely,

A handwritten signature in blue ink that reads "Raisa Blitterswyk".

Raisa Blitterswyk  
Process & Compliance Technician (A)  
OCWA Southwest Region-Paris Cluster

cc: Matthew D'Hondt, County of Brant  
Sam Sianas, Regional Hub Manager (OCWA)  
Ben Madill, Senior Operations Manager (OCWA)  
Stephanie Simpson, Safety, Process and Compliance Manager (OCWA)

## ***APPENDIX C***

### **2025 BYPASS NOTIFICATION TO MECP**



Paris WPCP  
120 Race St.  
Paris, ON N3L3X2

Ms. Ivanna Okroukh  
Ministry of the Environment, Conservation and Parks  
1 Stone Road West, Floor 4SW  
Guelph, Ontario N1G 4Y2

December 30, 2025

Dear Ms. Okroukh,

RE: Tertiary Filter bypass on December 28, 2025 at the St. George Water Pollution Control Plant (WPCP) located at 43 Victor Blvd, St George, ON. SAC Reference #1-PYPEUU.

This is a follow up to the notification provided to the Spills Action Center on December 28, 2025 concerning an unplanned tertiary bypass event that occurred at the St. George WPCP. This was due to excessive inflow from an extreme wet weather event brought on by significant rainfall and snowmelt in the surrounding area. The bypass was reported to SAC and downstream users on December 28, 2025 at 19:17hrs.

On December 28, 2025 at 18:15, Operations staff were called to the St George WPCP for a high filter level alarm. Upon arrival staff confirmed that the plant was receiving excessive flows at 19:00hrs due to the extreme wet weather condition. To minimize the amount of flow bypassed, wastewater was diverted to the digester and unnecessary recirculating side streams were reduced. The bypass of the Tertiary sand filters occurred between 19:05hrs to 22:15hrs. With a total estimated volume of 35m<sup>3</sup> being bypassed. Samples were obtained and results will be forwarded once received. Please refer to the attached bypass report.

If there are any questions or concerns regarding this notice, please contact me at (519) 761-8514.

Sincerely,

A handwritten signature in blue ink that reads "Raisa Blitterswyk".

Raisa Blitterswyk  
Process and Compliance Technician (A)  
Ontario Clean Water Agency

Cc// Matthew D'Hondt – Solid Waste/Wastewater Operations Manager, County of Brant  
Public Works – County of Brant  
Stephanie Simpson – Safety, Process and Compliance Manager, OCWA  
Sam Sianas – Regional Hub Manager, OCWA  
Benjamin Madill – Senior Operations Manager, OCWA Paris  
EEDONTOnCall@ec.gc.ca – Environment Canada WSER  
environmentalhealth@bchu.org – Brant Medical Officer of Health



**SGS Canada Inc.**  
 P.O. Box 4300 - 185 Concession St.  
 Lakefield - Ontario - K0L 2H0  
 Phone: 705-652-2000 FAX: 705-652-6365

**Works #:** 110003415  
**Project :** PO#017018

05-January-2026

**OCWA-Brant (St George WPCP)**  
 Attn : Meagan Lowden

**Date Rec. :** 30 December 2025  
**LR Report:** CA13881-DEC25

120 Race St.  
 Paris, ON  
 N3L 3X2, Canada

**Copy:** #1

Phone: 226-387-1292, 519-442-3255  
 Fax:

## CERTIFICATE OF ANALYSIS Final Report

Analysis	1: Analysis Start Date	2: Analysis Start Time	3: Analysis Completed Date	4: Analysis Completed Time	9: ScBy Scby-Secondary Effluent Bypass	10: ScBy Scby-Bypass - E.Coli
Sample Date & Time					28-Dec-25 19:28	29-Dec-25 09:00
Temperature Upon Receipt [°C]	---	---	---	---	7.0	7.0
Carbonaceous Biochemical Oxygen Demand [(CBOD5) mg/L]	30-Dec-25	16:37	05-Jan-26	11:25	4	---
Total Suspended Solids [mg/L]	31-Dec-25	07:45	31-Dec-25	14:48	2	---
Phosphorus (total) [mg/L]	02-Jan-26	13:45	05-Jan-26	11:15	0.69	---
Ammonia+Ammonium (N) [as N mg/L]	02-Jan-26	16:09	05-Jan-26	10:13	2.6	---
Field pH [no unit]	---	---	---	---	6.43	---
Field Temperature [celcius]	---	---	---	---	15.1	---
Total Chlorine [mg/L]	---	---	---	---	0.00	---
Ecoli [mpn/100mL]	30-Dec-25	14:37	31-Dec-25	14:44	---	< 100

  
 \_\_\_\_\_  
 Hawley Anderson, Hon.B.Sc  
 Project Specialist,  
 Environment, Health & Safety

## ***APPENDIX D***

### **ADDITIONAL SAMPLING**



**SGS Canada Inc.**  
 P.O. Box 4300 - 185 Concession St.  
 Lakefield - Ontario - K0L 2H0  
 Phone: 705-652-2000 FAX: 705-652-6365

**OCWA-Brant (St George WPCP)**

Attn : Meagan Lowden

120 Race St.  
 Paris, ON  
 N3L 3X2, Canada

Phone: 226-387-1292, 519-442-3255  
 Fax:

**Works #:** 110003415

**Project :** PO#017018

15-April-2025

**Date Rec. :** 08 April 2025

**LR Report:** CA13439-APR25

**Copy:** #1

## CERTIFICATE OF ANALYSIS


### Final Report

Analysis	1: Analysis Start Date	2: Analysis Start Time	3: Analysis Completed Date	4: Analysis Completed Time	6: Client Limits Nov - Apr	8: Client Objectives Nov-Apr	9: Eff Eff-Final Effluent
Sample Date & Time							04-Apr-25
Temperature Upon Receipt [°C]	---	---	---	---	---	---	5.0
Carbonaceous Biochemical Oxygen Demand [(CBOD5) mg/L]	09-Apr-25	16:56	14-Apr-25	14:30	15	10	< 4
Total Suspended Solids [mg/L]	09-Apr-25	09:02	09-Apr-25	16:17	15	10	3
Phosphorus (total) [mg/L]	09-Apr-25	16:13	10-Apr-25	10:37	0.42	0.30	0.14
Ammonia+Ammonium (N) [as N mg/L]	08-Apr-25	21:45	09-Apr-25	10:17	3.6	3	1.3

*Hawley Anderson, Hon.B.Sc*  
 Project Specialist,  
 Environment, Health & Safety

*APPENDIX E*

2026 SAMPLING CALENDAR

	<b>2026 St. George WPCP Sample Calendar</b>	Issued: 2025-11-06 Rev.#: 0 Pages: 1 of 12
	Reviewed by: Process & Compliance Technician	Approved by: Senior Operations Manager

### January 2026



Sun	Mon	Tue	Wed	Thu	Fri	Sat
				1 <input type="checkbox"/> IH Reduced STAT	2 <input type="checkbox"/> IH Reduced	3
4 <input type="checkbox"/> IH Full	5 <input type="checkbox"/> IH Full	6 <input type="checkbox"/> IH Full	7 <input type="checkbox"/> IH Reduced	8 <input type="checkbox"/> IH Reduced	9 <input type="checkbox"/> IH Reduced	10
11 <input type="checkbox"/> IH Full	12 <input type="checkbox"/> IH Full	13 <input type="checkbox"/> IH Full <input type="checkbox"/> Biweekly Sample with Full Biosolids	14 <input type="checkbox"/> IH Reduced	15 <input type="checkbox"/> IH Reduced	16 <input type="checkbox"/> IH Reduced	17
18 <input type="checkbox"/> IH Full	19 <input type="checkbox"/> IH Full	20 <input type="checkbox"/> IH Full	21 <input type="checkbox"/> IH Reduced	22 <input type="checkbox"/> IH Reduced	23 <input type="checkbox"/> IH Reduced	24
25 <input type="checkbox"/> IH Full	26 <input type="checkbox"/> IH Full	27 <input type="checkbox"/> IH Full <input type="checkbox"/> Biweekly Sample With Biosolids TS	28 <input type="checkbox"/> IH Reduced	29 <input type="checkbox"/> IH Reduced	30 <input type="checkbox"/> IH Reduced	31


**IH (In House) Full:** Grab Effluent (pH, Temp, DO, TRC)  
 Composite Effluent (TSS, TP, TAN)  
 Grab Composite Raw (pH, Temp.)  
 Grab Aeration (Set Test, MLSS, DO, pH, Temp.)  
 Grab RAS/WAS (TSS, Volume Wasted)  
 Grab Liquid Biosolids (%TSS)  
 Grab Clarifier (Blanket depth, TSS)

**IH (In House) Reduced:** Grab Effluent (pH, Temp, TRC, DO) on Tuesdays add (TP, Ammonia)  
 Grab Aeration (Set Test, DO, pH, Temp.)  
 Grab RAS/WAS (TSS, Volume Wasted)

**Raw Sample:** 24  Bi-weekly Composite (BOD5, TSS, TP, TKN)  
**Effluent Samples:** 24  Composite (cBOD5, TSS, TP, TAN, TKN)  
 Grab (E. coli, pH, temp, TRC)

**Sludge Samples (Monthly):** Grab (TS, TP, TAN, NO2, Metals (As, Cd, Co, Cr, Cu, Hg, K, Mo, Ni, ~~Pb~~, Se, Zn))  
**Creek Sampling (Once per month in April, May, Sept, Oct, Nov, Dec. Twice per month in June, July, August):** Grab (TP, TSS, TAN, E.coli, cBOD5, pH, Temp, DO)

**Notes:** Initial on date when sample was taken. Add any additional sampling completed for the facility. At the end of the month hand in to the PCT with folder.

	<b>2026 St. George WPCP Sample Calendar</b>	Issued: 2025-11-06 Rev.#: 0 Pages: 2 of 12
	Reviewed by: Process & Compliance Technician	Approved by: Senior Operations Manager

### February 2026

Sun	Mon	Tue	Wed	Thu	Fri	Sat
1	2 ☐ IH Full	3 ☐ IH Full	4 ☐ IH Reduced	5 ☐ IH Reduced	6 ☐ IH Reduced	7
8	9 ☐ IH Full	10 ☐ IH Full ☐ Biweekly Sample with Full Biosolids	11 ☐ IH Reduced	12 ☐ IH Reduced	13 ☐ IH Reduced	14
15 STAT	16 ☐ IH Reduced	17 ☐ IH Full	18 ☐ IH Reduced	19 ☐ IH Reduced	20 ☐ IH Reduced	21
22	23 ☐ IH Full	24 ☐ IH Full ☐ Biweekly Sample with Biosolids TS	25 ☐ IH Reduced	26 ☐ IH Reduced	27 ☐ IH Reduced	28


**IH (In House) Full:** Grab Effluent (pH, Temp, DO, TRC)  
 Composite Effluent (TSS, TP, TAN)  
 Grab Composite Raw (pH, Temp.)  
 Grab Aeration (Set Test, MLSS, DO, pH, Temp.)  
 Grab RAS/WAS (TSS, Volume Wasted)  
 Grab Liquid Biosolids (%TSS)  
 Grab Clarifier (Blanket depth, TSS)

**IH (In House) Reduced:** Grab Effluent (pH, Temp, TRC, DO) on Tuesdays add (TP, Ammonia)  
 Grab Aeration (Set Test, DO, pH, Temp.)  
 Grab RAS/WAS (TSS, Volume Wasted)

**Raw Sample:** 24 ☒ Bi-weekly Composite (BOD5, TSS, TP, TKN)  
**Effluent Samples:** 24 ☒ Composite (cBOD5, TSS, TP, TAN, TKN)  
 Grab (E. coli, pH, temp, TRC)

**Sludge Samples (Monthly):** Grab: TS, TP, TAN, NO2, Metals (As, Cd, Co, Cr, Cu, Hg, K, Mo, Ni, ~~Pb~~, Se, Zn)  
**Creek Sampling (Once per month in April, May, Sept, Oct, Nov, Dec. Twice per month in June, July, August):** Grab (TP, TSS, TAN, E.coli, cBOD5, pH, Temp, DO)

**Notes:** Initial on date when sample was taken. Add any additional sampling completed for the facility. At the end of the month hand in to the PCT with folder.

	<b>2026 St. George WPCP Sample Calendar</b>	Issued: 2025-11-06 Rev.#: 0 Pages: 3 of 12
	Reviewed by: Process & Compliance Technician	Approved by: Senior Operations Manager

### March 2026



Sun	Mon	Tue	Wed	Thu	Fri	Sat
1	2 ☐ IH Full	3 ☐ IH Full	4 ☐ IH Reduced	5 ☐ IH Reduced	6 ☐ IH Reduced	7
8 ☐ IH Full	9	10 ☐ IH Full ☐ Biweekly Sample with Full Biosolids	11 ☐ IH Reduced	12 ☐ IH Reduced	13 ☐ IH Reduced	14
15 ☐ IH Full	16	17 ☐ IH Full	18 ☐ IH Reduced	19 ☐ IH Reduced	20 ☐ IH Reduced	21
22 ☐ IH Full	23	24 ☐ IH Full ☐ Biweekly Sample with Biosolids TS	25 ☐ IH Reduced	26 ☐ IH Reduced	27 ☐ IH Reduced	28
29 ☐ IH Full	30	31 ☐ IH Full				

**IH (In House) Full:**

- Grab Effluent (pH, Temp, DO, TRC)
- Composite Effluent (TSS, TP, TAN)
- Grab Composite Raw (pH, Temp.)
- Grab Aeration (Set Test, MLSS, DO, pH, Temp.)
- Grab RAS/WAS (TSS, Volume Wasted)
- Grab Liquid Biosolids (%TSS)
- Grab Clarifier (Blanket depth, TSS)

**IH (In House) Reduced:**

- Grab Effluent (pH, Temp, TRC, DO) on Tuesdays add (TP, Ammonia)
- Grab Aeration (Set Test, DO, pH, Temp.)
- Grab RAS/WAS (TSS, Volume Wasted)

**Raw Sample:**

- 24 hr Bi-weekly Composite (BOD5, TSS, TP, TKN)

**Effluent Samples:**

- 24 hr Composite (cBOD5, TSS, TP, TAN, TKN)
- Grab (E. coli, pH, temp, TRC)


**Sludge Samples (Monthly):**

- Grab: TS, TP, TAN, NO2, Metals (As, Cd, Co, Cr, Cu, Hg, K, Mo, Ni, Pb, Se, Zn)

**Creek Sampling (Once per month in April, May, Sept, Oct, Nov, Dec. Twice per month in June, July, August):**

- Grab (TP, TSS, TAN, E.coli, cBOD5, pH, Temp, DO)

**Notes:** Initial on date when sample was taken. Add any additional sampling completed for the facility. At the end of the month hand in to the PCT with folder.

	<b>2026 St. George WPCP Sample Calendar</b>	Issued: 2025-11-06 Rev.#: 0 Pages: 4 of 12
	Reviewed by: Process & Compliance Technician	Approved by: Senior Operations Manager

### April 2026

Sun	Mon	Tue	Wed	Thu	Fri	Sat
			1 ☐ IH Reduced	2 ☐ IH Reduced	3 ☐ IH Reduced <b>STAT</b>	4
5	6 ☐ IH Full <b>STAT</b>	7 ☐ IH Full ☐ Biweekly Sample with Full Biosolids ☐ Creek Sampling	8 ☐ IH Reduced	9 ☐ IH Reduced	10 ☐ IH Reduced	11
12	13 ☐ IH Full	14 ☐ IH Full	15 ☐ IH Reduced	16 ☐ IH Reduced	17 ☐ IH Reduced	18
19	20 ☐ IH Full	21 ☐ IH Full ☐ Biweekly Sample With Biosolids TS	22 ☐ IH Reduced	23 ☐ IH Reduced	24 ☐ IH Reduced	25
26	27 ☐ IH Full	28 ☐ IH Full	29 ☐ IH Reduced	30 ☐ IH Reduced		

**IH (In House) Full:** Grab Effluent (pH, Temp, DO, TRC)  
 Composite Effluent (TSS, TP, TAN)  
 Grab Composite Raw (pH, Temp.)  
 Grab Aeration (Set Test, MLSS, DO, pH, Temp.)  
 Grab RAS/WAS (TSS, Volume Wasted)  
 Grab Liquid Biosolids (%TSS)  
 Grab Clarifier (Blanket depth, TSS)


**IH (In House) Reduced:** Grab Effluent (pH, Temp, TRC, DO) on Tuesdays add (TP, Ammonia)  
 Grab Aeration (Set Test, DO, pH, Temp.)  
 Grab RAS/WAS (TSS, Volume Wasted)

**Raw Sample:** 24 hr Bi-weekly Composite (BOD5, TSS, TP, TKN)  
**Effluent Samples:** 24 hr Composite (cBOD5, TSS, TP, TAN, TKN)  
 Grab (E. coli, pH, temp, TRC)

**Sludge Samples (Monthly):** Grab: TS, TP, TAN, NO2, Metals (As, Cd, Co, Cr, Cu, Hg, K, Mo, Ni, ~~Pb~~, Se, Zn)

**Creek Sampling (Once per month in April, May, Sept, Oct, Nov, Dec. Twice per month in June, July, August):** Grab (TP, TSS, TAN, E.coli, cBOD5, pH, Temp, DO)

Notes: Initial on date when sample was taken. Add any additional sampling completed for the facility. At the end of the month hand in to the PCT with folder.

	<b>2026 St. George WPCP Sample Calendar</b>	Issued: 2025-11-06 Rev.#: 0 Pages: 5 of 12
	Reviewed by: Process & Compliance Technician	Approved by: Senior Operations Manager

### May 2026

Sun	Mon	Tue	Wed	Thu	Fri	Sat
					1 IH Reduced	2
3	4 IH Full	5 IH Full Biweekly Sample with Full Biosolids Creek Sampling	6 IH Reduced	7 IH Reduced	8 IH Reduced	9
10	11 IH Full	12 IH Full	13 IH Reduced	14 IH Reduced	15 IH Reduced	16
17	18 IH Full STAT	19 IH Full Biweekly Sample With Biosolids TS	20 IH Reduced	21 IH Reduced	22 IH Reduced	23
24	25 IH Full	26 IH Full	27 IH Reduced	28 IH Reduced	29 IH Reduced	30


**IH (In House) Full:** Grab Effluent (pH, Temp, DO, TRC)  
 Composite Effluent (TSS, TP, TAN)  
 Grab Composite Raw (pH, Temp.)  
 Grab Aeration (Set Test, MLSS, DO, pH, Temp.)  
 Grab RAS/WAS (TSS, Volume Wasted)  
 Grab Liquid Biosolids (%TSS)  
 Grab Clarifier (Blanket depth, TSS)

**IH (In House) Reduced:** Grab Effluent (pH, Temp, TRC, DO) on Tuesdays add (TP, Ammonia)  
 Grab Aeration (Set Test, DO, pH, Temp.)  
 Grab RAS/WAS (TSS, Volume Wasted)

**Raw Sample:** 24 hr Bi-weekly Composite (BOD5, TSS, TP, TKN)  
**Effluent Samples:** 24 hr Composite (cBOD5, TSS, TP, TAN, TKN)  
 Grab (E. coli, pH, temp, TRC)

**Sludge Samples (Monthly):** Grab: TS, TP, TAN, NO2, Metals (As, Cd, Co, Cr, Cu, Hg, K, Mo, Ni, Pb, Se, Zn)  
**Creek Sampling (Once per month in April, May, Sept, Oct, Nov, Dec. Twice per month in June, July, August):** Grab (TP, TSS, TAN, E.coli, cBOD5, pH, Temp, DO)

Notes: Initial on date when sample was taken. Add any additional sampling completed for the facility. At the end of the month hand in to the PCT with folder.

	<h2 style="margin: 0;">2026 St. George WPCP Sample Calendar</h2>	Issued: 2025-11-06 Rev.#: 0 Pages: 6 of 12
Reviewed by: Process & Compliance Technician		Approved by: Senior Operations Manager

### June 2026

Sun	Mon	Tue	Wed	Thu	Fri	Sat
May 31	1 <input type="checkbox"/> IH Full	2 <input type="checkbox"/> IH Full <b><input type="checkbox"/> Biweekly Sample with Full Biosolids</b> <b><input type="checkbox"/> Creek Sampling</b>	3 <input type="checkbox"/> IH Reduced	4 <input type="checkbox"/> IH Reduced	5 <input type="checkbox"/> IH Reduced	6
7	8 <input type="checkbox"/> IH Full	9 <input type="checkbox"/> IH Full	10 <input type="checkbox"/> IH Reduced	11 <input type="checkbox"/> IH Reduced	12 <input type="checkbox"/> IH Reduced	13
14	15 <input type="checkbox"/> IH Full	16 <input type="checkbox"/> IH Full <b><input type="checkbox"/> Biweekly Sample With Biosolids TS</b> <b><input type="checkbox"/> Creek Sampling</b>	17 <input type="checkbox"/> IH Reduced	18 <input type="checkbox"/> IH Reduced	19 <input type="checkbox"/> IH Reduced	20
21	22 <input type="checkbox"/> IH Full	23 <input type="checkbox"/> IH Full	24 <input type="checkbox"/> IH Reduced	25 <input type="checkbox"/> IH Reduced	26 <input type="checkbox"/> IH Reduced	27
28	29 <input type="checkbox"/> IH Full	30 <input type="checkbox"/> IH Full <b><input type="checkbox"/> Biweekly Sample With Biosolids TS</b>				

**IH (In House) Full:** Grab Effluent (pH, Temp, DO, TRC)  
 Composite Effluent (TSS, TP, TAN)  
 Grab Composite Raw (pH, Temp.)  
 Grab Aeration (Set Test, MLSS, DO, pH, Temp.)  
 Grab RAS/WAS (TSS, Volume Wasted)  
 Grab Liquid Biosolids (%TSS)  
 Grab Clarifier (Blanket depth, TSS)


**IH (In House) Reduced:** Grab Effluent (pH, Temp, TRC, DO) on Tuesdays add (TP, Ammonia)  
 Grab Aeration (Set Test, DO, pH, Temp.)  
 Grab RAS/WAS (TSS, Volume Wasted)

**Raw Sample:** 24  Bi-weekly Composite (BOD5, TSS, TP, TKN)  
**Effluent Samples:** 24  Composite (cBOD5, TSS, TP, TAN, TKN)  
 Grab (E. coli, pH, temp, TRC)

**Sludge Samples (Monthly):** Grab: TS, TP, TAN, NO2, Metals (As, Cd, Co, Cr, Cu, Hg, K, Mo, Ni, Pb, Se, Zn)

**Creek Sampling (Once per month in April, May, Sept, Oct, Nov, Dec. Twice per month in June, July, August):** Grab (TP, TSS, TAN, E.coli, cBOD5, pH, Temp, DO)

Notes: Initial on date when sample was taken. Add any additional sampling completed for the facility. At the end of the month hand in to the PCT with folder.

	<b>2026 St. George WPCP Sample Calendar</b>	Issued: 2025-11-06 Rev.#: 0 Pages: 7 of 12
	Reviewed by: Process & Compliance Technician	Approved by: Senior Operations Manager

### July 2026

Sun	Mon	Tue	Wed	Thu	Fri	Sat
			1 IH Reduced STAT	2 IH Reduced	3 IH Reduced	4
5	6 IH Full	7 IH Full	8 IH Reduced	9 IH Reduced	10 IH Reduced	11
12 IH Full	13 IH Full	14 IH Full Biweekly Sample with Full Biosolids Creek Sampling	15 IH Reduced	16 IH Reduced	17 IH Reduced	18
19 IH Full	20 IH Full	21 IH Full	22 IH Reduced	23 IH Reduced	24 IH Reduced	25
26 IH Full	27 IH Full	28 IH Full Biweekly Sample With Biosolids TS Creek Sampling	29 IH Reduced	30 IH Reduced	31 IH Reduced	

**IH (In House) Full:** Grab Effluent (pH, Temp, DO, TRC)  
 Composite Effluent (TSS, TP, TAN)  
 Grab Composite Raw (pH, Temp.)  
 Grab Aeration (Set Test, MLSS, DO, pH, Temp.)  
 Grab RAS/WAS (TSS, Volume Wasted)  
 Grab Liquid Biosolids (%TSS)  
 Grab Clarifier (Blanket depth, TSS)


**IH (In House) Reduced:** Grab Effluent (pH, Temp, TRC, DO) on Tuesdays add (TP, Ammonia)  
 Grab Aeration (Set Test, DO, pH, Temp.)  
 Grab RAS/WAS (TSS, Volume Wasted)

**Raw Sample:** 24 hr Bi-weekly Composite (BOD5, TSS, TP, TKN)  
**Effluent Samples:** 24 hr Composite (cBOD5, TSS, TP, TAN, TKN)  
 Grab (E. coli, pH, temp, TRC)

**Sludge Samples (Monthly):** Grab: TS, TP, TAN, NO2, Metals (As, Cd, Co, Cr, Cu, Hg, K, Mo, Ni, Pb, Se, Zn)

**Creek Sampling (Once per month in April, May, Sept, Oct, Nov, Dec. Twice per month in June, July, August):** Grab (TP, TSS, TAN, E coli, cBOD5, pH, Temp, DO)

**Notes:** Initial on date when sample was taken. Add any additional sampling completed for the facility. At the end of the month hand in to the PCT with folder.

	<b>2026 St. George WPCP Sample Calendar</b>	Issued: 2025-11-06 Rev.#: 0 Pages: 8 of 12
Reviewed by: Process & Compliance Technician	Approved by: Senior Operations Manager	

### August 2026



Sun	Mon	Tue	Wed	Thu	Fri	Sat
						1
2	□ IH Full  <b>STAT</b>	3	4	5	6	7
	□ IH Full	□ IH Full  □ Biweekly Sample with Full Biosolids □ Creek Sampling	8	9	10	11
16	□ IH Full	17	18	19	20	21
	□ IH Full	□ IH Full  □ Biweekly Sample With Biosolids TS □ Creek Sampling	22	23	24	25
23	□ IH Full	24	25	26	27	28
	□ IH Full	29	30	31		
30	□ IH Full					

**IH (In House) Full:** Grab Effluent (pH, Temp, DO, TRC)  
 Composite Effluent (TSS, TP, TAN)  
 Grab Composite Raw (pH, Temp.)  
 Grab Aeration (Set Test, MLSS, DO, pH, Temp.)  
 Grab RAS/WAS (TSS, Volume Wasted)  
 Grab Liquid Biosolids (%TSS)  
 Grab Clarifier (Blanket depth, TSS)


**IH (In House) Reduced:** Grab Effluent (pH, Temp, TRC, DO) on Tuesdays add (TP, Ammonia)  
 Grab Aeration (Set Test, DO, pH, Temp.)  
 Grab RAS/WAS (TSS, Volume Wasted)

**Raw Sample:** 24 hr Bi-weekly Composite (BOD5, TSS, TP, TKN)  
**Effluent Samples:** 24 hr Composite (cBOD5, TSS, TP, TAN, TKN)  
 Grab (E. coli, pH, temp, TRC)

**Sludge Samples (Monthly):** Grab: TS, TP, TAN, NO2, Metals (As, Cd, Co, Cr, Cu, Hg, K, Mo, Ni, Pb, Se, Zn)

**Creek Sampling (Once per month in April, May, Sept, Oct, Nov, Dec. Twice per month in June, July, August):** Grab (TP, TSS, TAN, E.coli, cBOD5, pH, Temp, DO)

**Notes:** Initial on date when sample was taken. Add any additional sampling completed for the facility. At the end of the month hand in to the PCT with folder.

	<b>2026 St. George WPCP Sample Calendar</b>	Issued: 2025-11-06 Rev #: 0 Pages: 9 of 12
	Reviewed by: Process & Compliance Technician	Approved by: Senior Operations Manager

### September 2026

Sun	Mon	Tue	Wed	Thu	Fri	Sat
		1 <input type="checkbox"/> IH Full	2 <input type="checkbox"/> IH Reduced	3 <input type="checkbox"/> IH Reduced	4 <input type="checkbox"/> IH Reduced	5
6 <input type="checkbox"/> IH Full  STAT	7 <input type="checkbox"/> IH Full	8 <input type="checkbox"/> IH Full <input type="checkbox"/> Biweekly Sample with Full Biosolids <input type="checkbox"/> Creek Sampling	9 <input type="checkbox"/> IH Reduced	10 <input type="checkbox"/> IH Reduced	11 <input type="checkbox"/> IH Reduced	12
13 <input type="checkbox"/> IH Full	14 <input type="checkbox"/> IH Full	15 <input type="checkbox"/> IH Full	16 <input type="checkbox"/> IH Reduced	17 <input type="checkbox"/> IH Reduced	18 <input type="checkbox"/> IH Reduced	19
20 <input type="checkbox"/> IH Full	21 <input type="checkbox"/> IH Full	22 <input type="checkbox"/> IH Full <input type="checkbox"/> Biweekly Sample With Biosolids TS	23 <input type="checkbox"/> IH Reduced	24 <input type="checkbox"/> IH Reduced	25 <input type="checkbox"/> IH Reduced	26
27 <input type="checkbox"/> IH Full	28 <input type="checkbox"/> IH Full	29 <input type="checkbox"/> IH Full	30 <input type="checkbox"/> IH Reduced  STAT			


**IH (In House) Full:** Grab Effluent (pH, Temp, DO, TRC)  
 Composite Effluent (TSS, TP, TAN)  
 Grab Composite Raw (pH, Temp.)  
 Grab Aeration (Set Test, MLSS, DO, pH, Temp.)  
 Grab RAS/WAS (TSS, Volume Wasted)  
 Grab Liquid Biosolids (%TSS)  
 Grab Clarifier (Blanket depth, TSS)

**IH (In House) Reduced:** Grab Effluent (pH, Temp, TRC, DO) on Tuesdays add (TP, Ammonia)  
 Grab Aeration (Set Test, DO, pH, Temp.)  
 Grab RAS/WAS (TSS, Volume Wasted)

**Raw Sample:** 24 hr Bi-weekly Composite (BOD5, TSS, TP, TKN)  
**Effluent Samples:** 24 hr Composite (cBOD5, TSS, TP, TAN, TKN)  
 Grab (E. coli, pH, temp, TRC)

**Sludge Samples (Monthly):** Grab: TS, TP, TAN, NO2, Metals (As, Cd, Co, Cr, Cu, Hg, K, Mo, Ni, Pb, Se, Zn)  
**Creek Sampling (Once per month in April, May, Sept, Oct, Nov, Dec. Twice per month in June, July, August):** Grab (TP, TSS, TAN, E.coli, cBOD5, pH, Temp, DO)

Notes: Initial on date when sample was taken. Add any additional sampling completed for the facility. At the end of the month hand in to the PCT with folder.

	<b>2026 St. George WPCP Sample Calendar</b>	Issued: 2025-11-06 Rev.#: 0 Pages: 10 of 12
	Reviewed by: Process & Compliance Technician	Approved by: Senior Operations Manager

### October 2026

Sun	Mon	Tue	Wed	Thu	Fri	Sat
				1 ☐ IH Reduced	2 ☐ IH Reduced	3
4	☐ IH Full	5 ☐ IH Full ☐ Biweekly Sample with Full Biosolids ☐ Creek Sampling	6 ☐ IH Reduced	7 ☐ IH Reduced	8 ☐ IH Reduced	9 ☐ IH Reduced
10						
11	☐ IH Full <b>STAT</b>	12 ☐ IH Full	13 ☐ IH Reduced	14 ☐ IH Reduced	15 ☐ IH Reduced	16 ☐ IH Reduced
17						
18	☐ IH Full	19 ☐ IH Full ☐ Biweekly Sample With Biosolids TS	20 ☐ IH Reduced	21 ☐ IH Reduced	22 ☐ IH Reduced	23 ☐ IH Reduced
24						
25	☐ IH Full	26 ☐ IH Full	27 ☐ IH Reduced	28 ☐ IH Reduced	29 ☐ IH Reduced	30 ☐ IH Reduced
31						


**IH (In House) Full:** Grab Effluent (pH, Temp, DO, TRC)  
 Composite Effluent (TSS, TP, TAN)  
 Grab Composite Raw (pH, Temp.)  
 Grab Aeration (Set Test, MLSS, DO, pH, Temp.)  
 Grab RAS/WAS (TSS, Volume Wasted)  
 Grab Liquid Biosolids (%TSS)

**IH (In House) Reduced:** Grab Clarifier (Blanket depth, TSS)  
 Grab Effluent (pH, Temp, TRC, DO) on Tuesdays add (TP, Ammonia)  
 Grab Aeration (Set Test, DO, pH, Temp.)  
 Grab RAS/WAS (TSS, Volume Wasted)

**Raw Sample:** 24 h Bi-weekly Composite (BOD5, TSS, TP, TKN)  
**Effluent Samples:** 24 h Composite (cBOD5, TSS, TP, TAN, TKN)  
 Grab (E. coli, pH, temp, TRC)

**Sludge Samples (Monthly):** Grab: TS, TP, TAN, NO2, Metals (As, Cd, Co, Cr, Cu, Hg, K, Mo, Ni, Pb, Se, Zn)  
**Creek Sampling (Once per month in April, May, Sept, Oct, Nov, Dec. Twice per month in June, July, August):** Grab (TP, TSS, TAN, E.coli, cBOD5, pH, Temp, DO)

Notes: Initial on date when sample was taken. Add any additional sampling completed for the facility. At the end of the month hand in to the PCT with folder.

	<h2 style="margin: 0;">2026 St. George WPCP Sample Calendar</h2>	Issued: 2025-11-06 Rev.#: 0 Pages: 11 of 12
Reviewed by: Process & Compliance Technician		Approved by: Senior Operations Manager

### November 2026

Sun	Mon	Tue	Wed	Thu	Fri	Sat
1	2 ☐ IH Full	3 ☐ IH Full ☐ Biweekly Sample with Full Biosolids ☐ Creek Sampling	4 ☐ IH Reduced	5 ☐ IH Reduced	6 ☐ IH Reduced	7
8 ☐ IH Full	9 ☐ IH Full	10 ☐ IH Full	11 ☐ IH Reduced  STAT	12 ☐ IH Reduced	13 ☐ IH Reduced	14
15 ☐ IH Full	16 ☐ IH Full	17 ☐ IH Full ☐ Biweekly Sample With Biosolids TS	18 ☐ IH Reduced	19 ☐ IH Reduced	20 ☐ IH Reduced	21
22 ☐ IH Full	23 ☐ IH Full	24 ☐ IH Full	25 ☐ IH Reduced	26 ☐ IH Reduced	27 ☐ IH Reduced	28
29 ☐ IH Full	30					

**IH (In House) Full:**  
 Grab Effluent (pH, Temp, DO, TRC)  
 Composite Effluent (TSS, TP, TAN)  
 Grab Composite Raw (pH, Temp.)  
 Grab Aeration (Set Test, MLSS, DO, pH, Temp.)  
 Grab RAS/WAS (TSS, Volume Wasted)  
 Grab Liquid Biosolids (%TSS)  
 Grab Clarifier (Blanket depth, TSS)

**IH (In House) Reduced:**  
 Grab Effluent (pH, Temp, TRC, DO) on Tuesdays add (TP, Ammonia)  
 Grab Aeration (Set Test, DO, pH, Temp.)  
 Grab RAS/WAS (TSS, Volume Wasted)


**Raw Sample:**  
 24 ~~h~~ Bi-weekly Composite (BOD5, TSS, TP, TKN)

**Effluent Samples:**  
 24 ~~h~~ Composite (cBOD5, TSS, TP, TAN, TKN)  
 Grab (E. coli, pH, temp, TRC)

**Sludge Samples (Monthly):**  
 Grab: TS, TP, TAN, NO2, Metals (As, Cd, Co, Cr, Cu, Hg, K, Mo, Ni, ~~Pb~~, Se, Zn)

**Creek Sampling (Once per month in April, May, Sept, Oct, Nov, Dec. Twice per month in June, July, August):**  
 Grab (TP, TSS, TAN, E.coli, cBOD5, pH, Temp, DO)

**Notes:** Initial on date when sample was taken. Add any additional sampling completed for the facility. At the end of the month hand in to the PCT with folder.

	<b>2026 St. George WPCP Sample Calendar</b>	Issued: 2025-11-06 Rev.#: 0 Pages: 12 of 12
Reviewed by: Process & Compliance Technician		Approved by: Senior Operations Manager

### December 2026

Sun	Mon	Tue	Wed	Thu	Fri	Sat
		1 <input type="checkbox"/> IH Full <input type="checkbox"/> Biweekly Sample with Full Biosolids <input type="checkbox"/> Creek Sampling	2 <input type="checkbox"/> IH Reduced	3 <input type="checkbox"/> IH Reduced	4 <input type="checkbox"/> IH Reduced	5
6 <input type="checkbox"/> IH Full	7 <input type="checkbox"/> IH Full	8 <input type="checkbox"/> IH Full	9 <input type="checkbox"/> IH Reduced	10 <input type="checkbox"/> IH Reduced	11 <input type="checkbox"/> IH Reduced	12
13 <input type="checkbox"/> IH Full	14 <input type="checkbox"/> IH Full	15 <input type="checkbox"/> IH Full <input type="checkbox"/> Biweekly Sample With Biosolids TS	16 <input type="checkbox"/> IH Reduced	17 <input type="checkbox"/> IH Reduced	18 <input type="checkbox"/> IH Reduced	19
20 <input type="checkbox"/> IH Full	21 <input type="checkbox"/> IH Full	22 <input type="checkbox"/> IH Full	23 <input type="checkbox"/> IH Reduced	24 <input type="checkbox"/> IH Reduced	25 <input type="checkbox"/> IH Reduced  <b>STAT</b>	26
27 <input type="checkbox"/> IH Full  <b>STAT</b>	28 <input type="checkbox"/> IH Full	29 <input type="checkbox"/> IH Full <input type="checkbox"/> Biweekly Sample With Biosolids TS	30 <input type="checkbox"/> IH Reduced	31 <input type="checkbox"/> IH Reduced		

**IH (In House) Full:** Grab Effluent (pH, Temp, DO, TRC)  
 Composite Effluent (TSS, TP, TAN)  
 Grab Composite Raw (pH, Temp.)  
 Grab Aeration (Set Test, MLSS, DO, pH, Temp.)  
 Grab RAS/WAS (TSS, Volume Wasted)  
 Grab Liquid Biosolids (%TSS)

**IH (In House) Reduced:** Grab Clarifier (Blanket depth, TSS)  
 Grab Effluent (pH, Temp, TRC, DO) on Tuesdays add (TP, Ammonia)  
 Grab Aeration (Set Test, DO, pH, Temp.)  
 Grab RAS/WAS (TSS, Volume Wasted)

**Raw Sample:** 24 hr Bi-weekly Composite (BOD5, TSS, TP, TKN)  
**Effluent Samples:** 24 hr Composite (cBOD5, TSS, TP, TAN, TKN)  
 Grab (E. coli, pH, temp, TRC)

**Sludge Samples (Monthly):** Grab: TS, TP, TAN, NO2, Metals (As, Cd, Co, Cr, Cu, Hg, K, Mo, Ni, Pb, Se, Zn)  
**Creek Sampling (Once per month in April, May, Sept, Oct, Nov, Dec. Twice per month in June, July, August):** Grab (TP, TSS, TAN, E.coli, cBOD5, pH, Temp, DO)

**Notes:** Initial on date when sample was taken. Add any additional sampling completed for the facility. At the end of the month hand in to the PCT with folder.