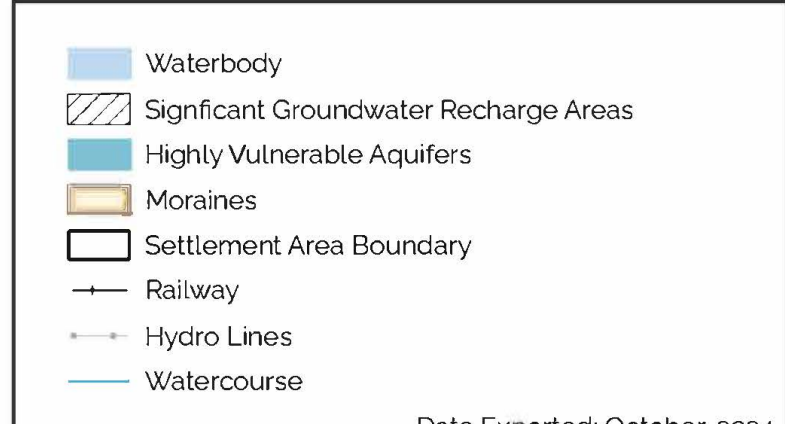
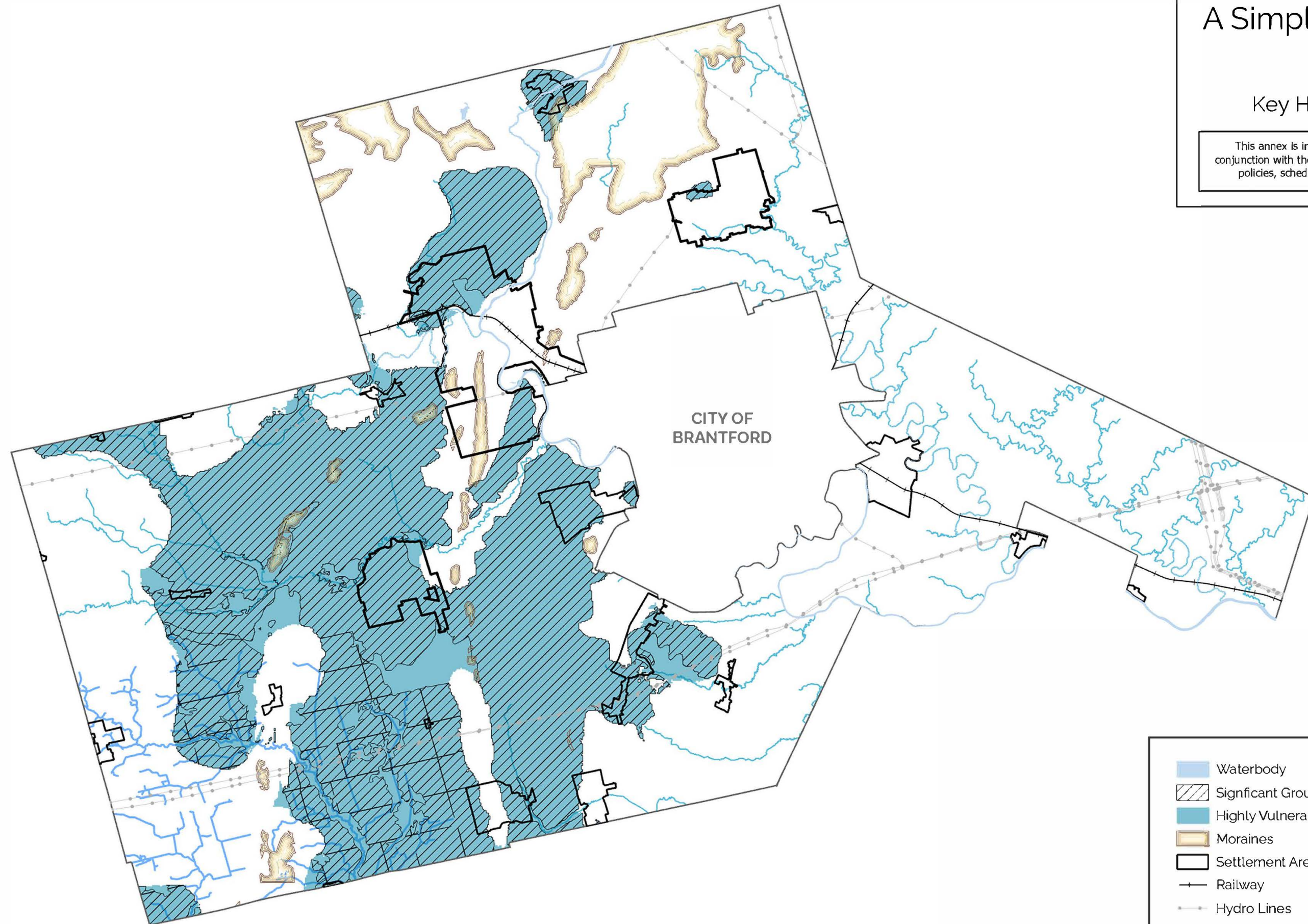


# A Simply Grand *Plan*

## Annex 1

### Key Hydrologic Areas

This annex is intended to be read and interpreted in conjunction with the Official Plan in its entirety, including the policies, schedules, and other annexes of the Plan.

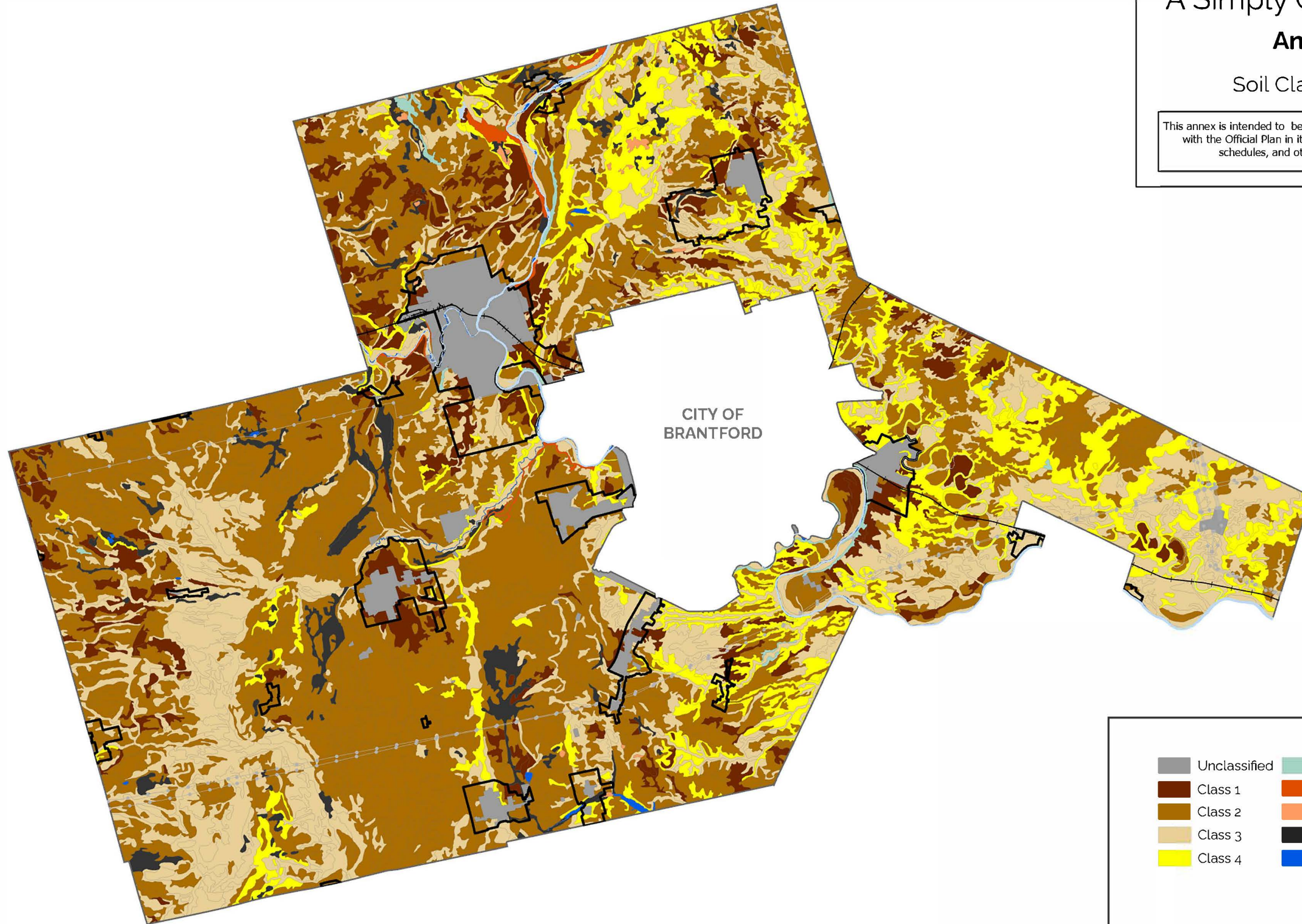


# A Simply Grand *Plan*

## Annex 2

### Soil Classification

This annex is intended to be read and interpreted in conjunction with the Official Plan in its entirety, including the policies, schedules, and other annexes of the Plan.





# A Simply Grand *Plan*

## Annex 3

### Built Cultural Heritage Interest

This annex is intended to be read and interpreted in conjunction with the Official Plan in its entirety, including the policies, schedules, and other annexes of the Plan.



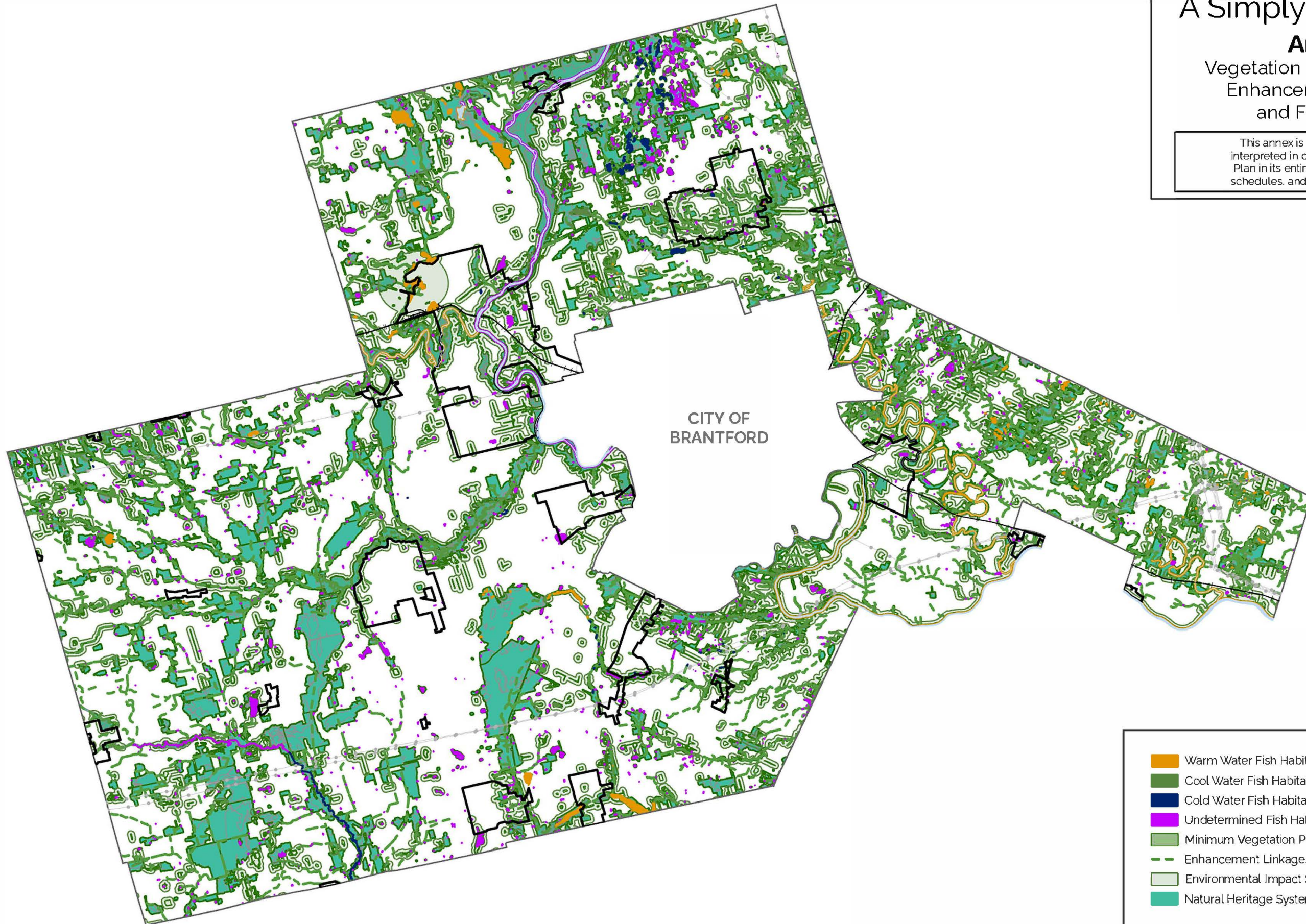
-  Property with Potential Cultural Heritage Interest
-  Areas with Potential Cultural Heritage Interest

# A Simply Grand *Plan*

## Annex 4

### Vegetation Protection Zones, Enhancement Linkages, and Fish Habitats

This annex is intended to be read and interpreted in conjunction with the Official Plan in its entirety, including the policies, schedules, and other annexes of the Plan.



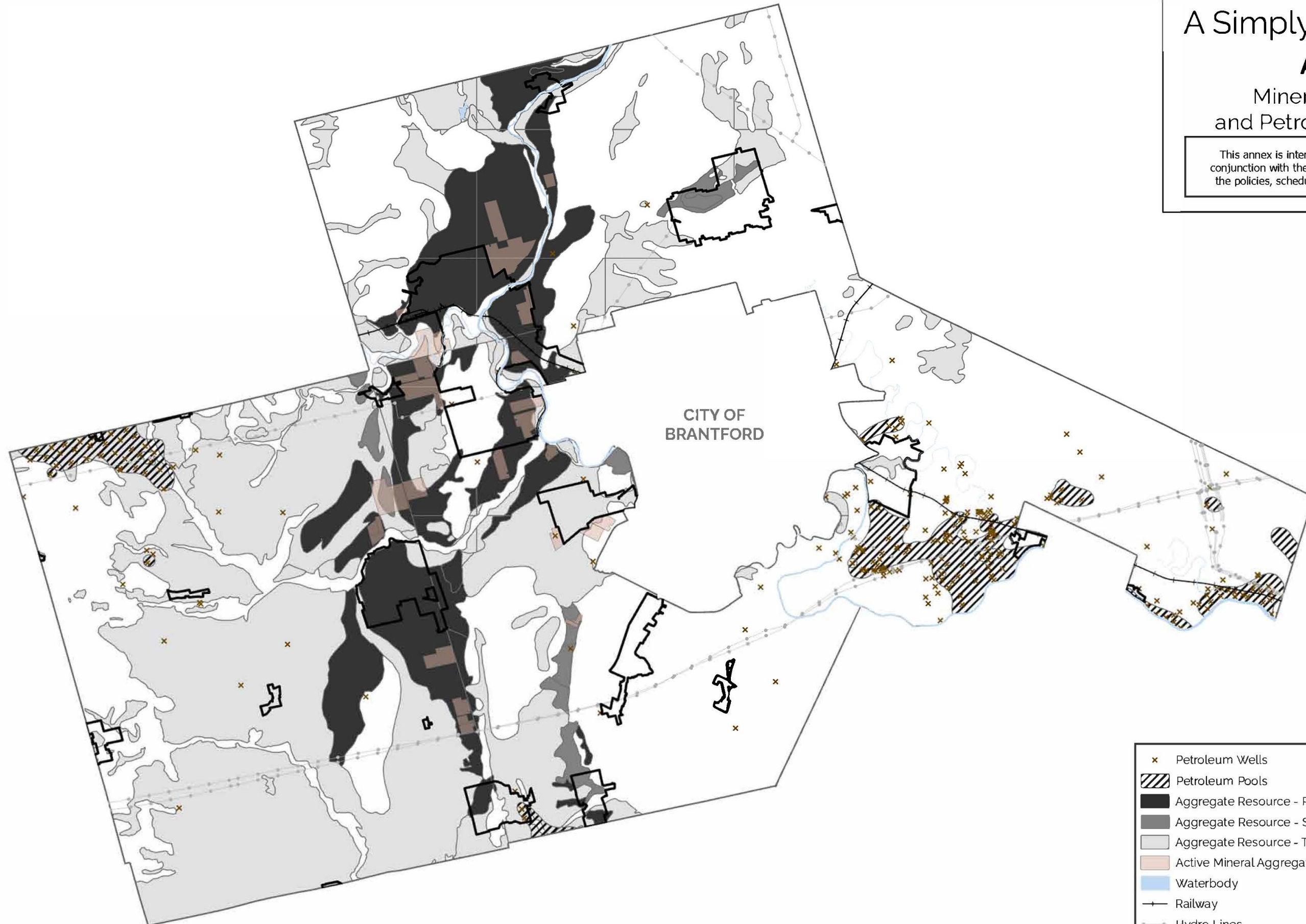
- Warm Water Fish Habitat
- Cool Water Fish Habitat
- Cold Water Fish Habitat
- Undetermined Fish Habitat
- Minimum Vegetation Protection Zone
- Enhancement Linkages
- Environmental Impact Study - Adjacent Lands Overlay
- Natural Heritage System

# A Simply Grand *Plan*

## Annex 5

### Mineral Aggregate and Petroleum Resources

This annex is intended to be read and interpreted in conjunction with the Official Plan in its entirety, including the policies, schedules, and other annexes of the Plan.



CITY OF  
BRANTFORD

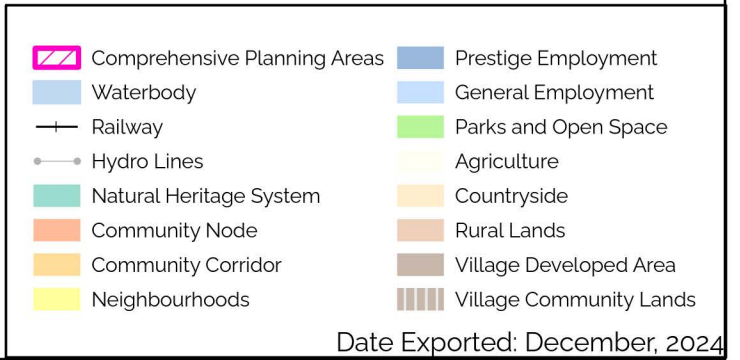
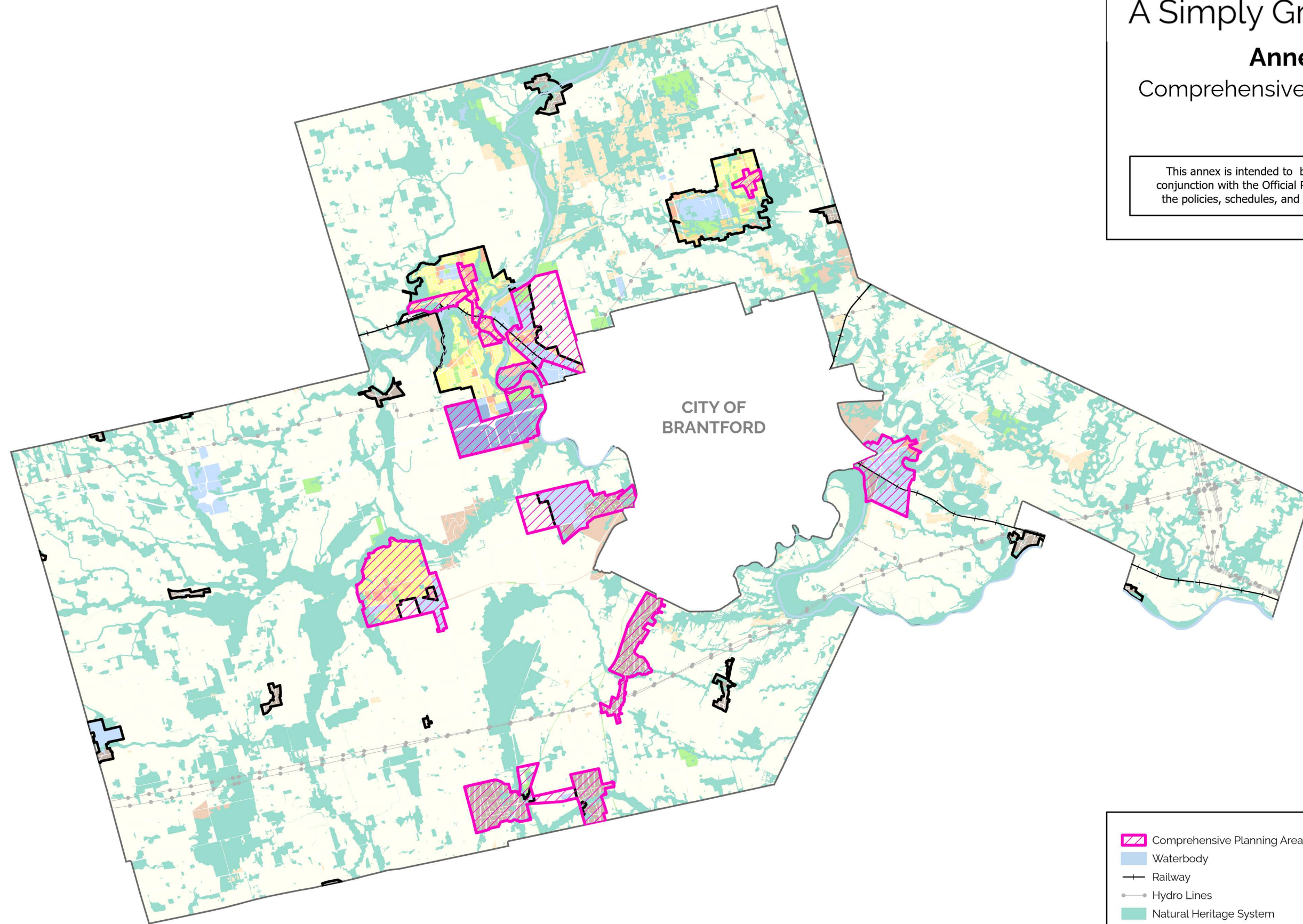
- x Petroleum Wells
- ▨ Petroleum Pools
- Aggregate Resource - Primary Significance
- Aggregate Resource - Secondary Significance
- Aggregate Resource - Tertiary Significance
- Active Mineral Aggregate Sites
- Waterbody
- +— Railway
- Hydro Lines

# A Simply Grand *Plan*

## Annex 6

### Comprehensive Planning Area

This annex is intended to be read and interpreted in conjunction with the Official Plan in its entirety, including the policies, schedules, and other annexes of the Plan.



Date Exported: December, 2024

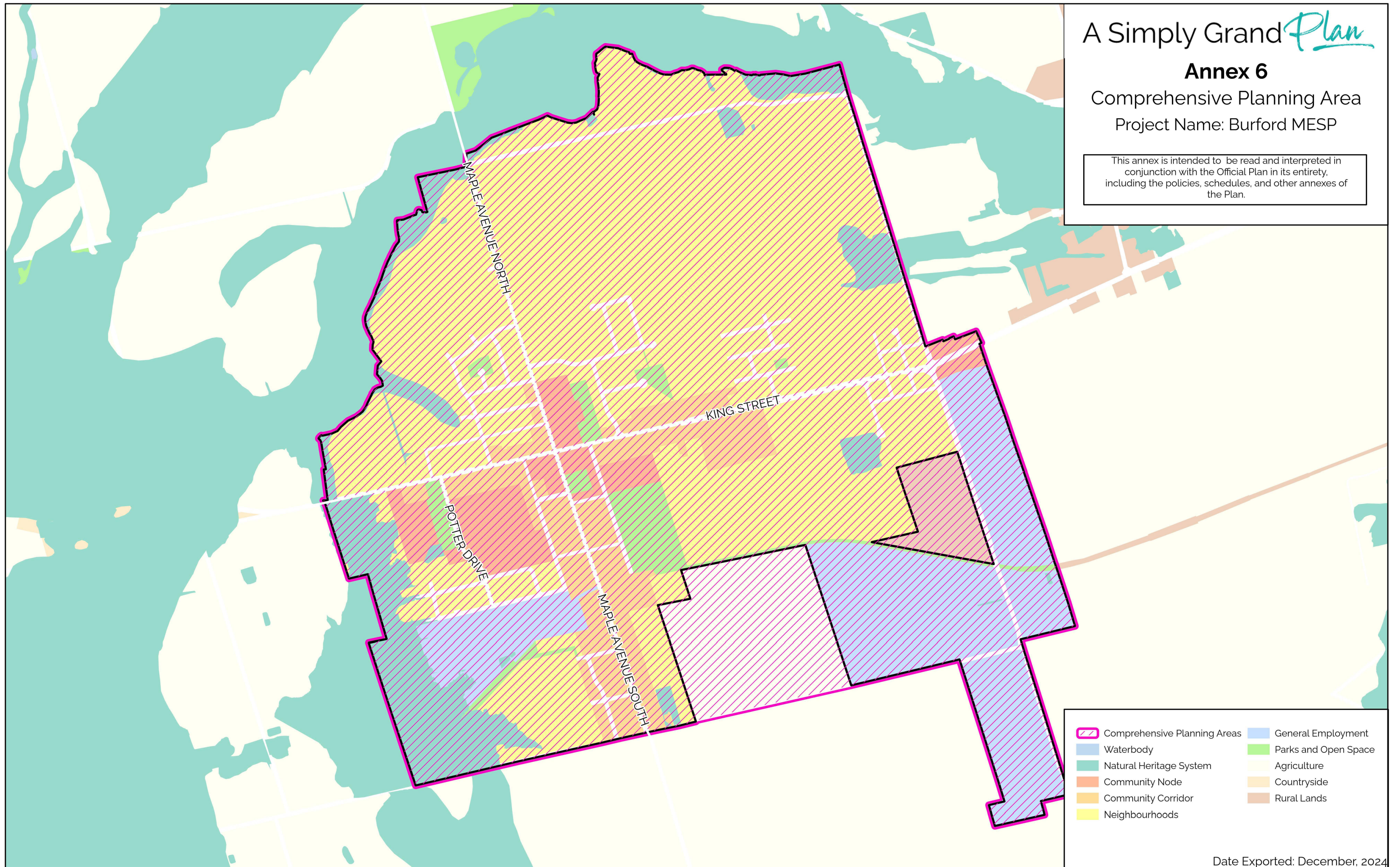
# A Simply Grand *Plan*

## Annex 6

Comprehensive Planning Area

Project Name: Burford MESP

This annex is intended to be read and interpreted in conjunction with the Official Plan in its entirety, including the policies, schedules, and other annexes of the Plan.



- Comprehensive Planning Areas
- Waterbody
- Natural Heritage System
- Community Node
- Community Corridor
- Neighbourhoods
- General Employment
- Parks and Open Space
- Agriculture
- Countryside
- Rural Lands

# A Simply Grand *Plan*

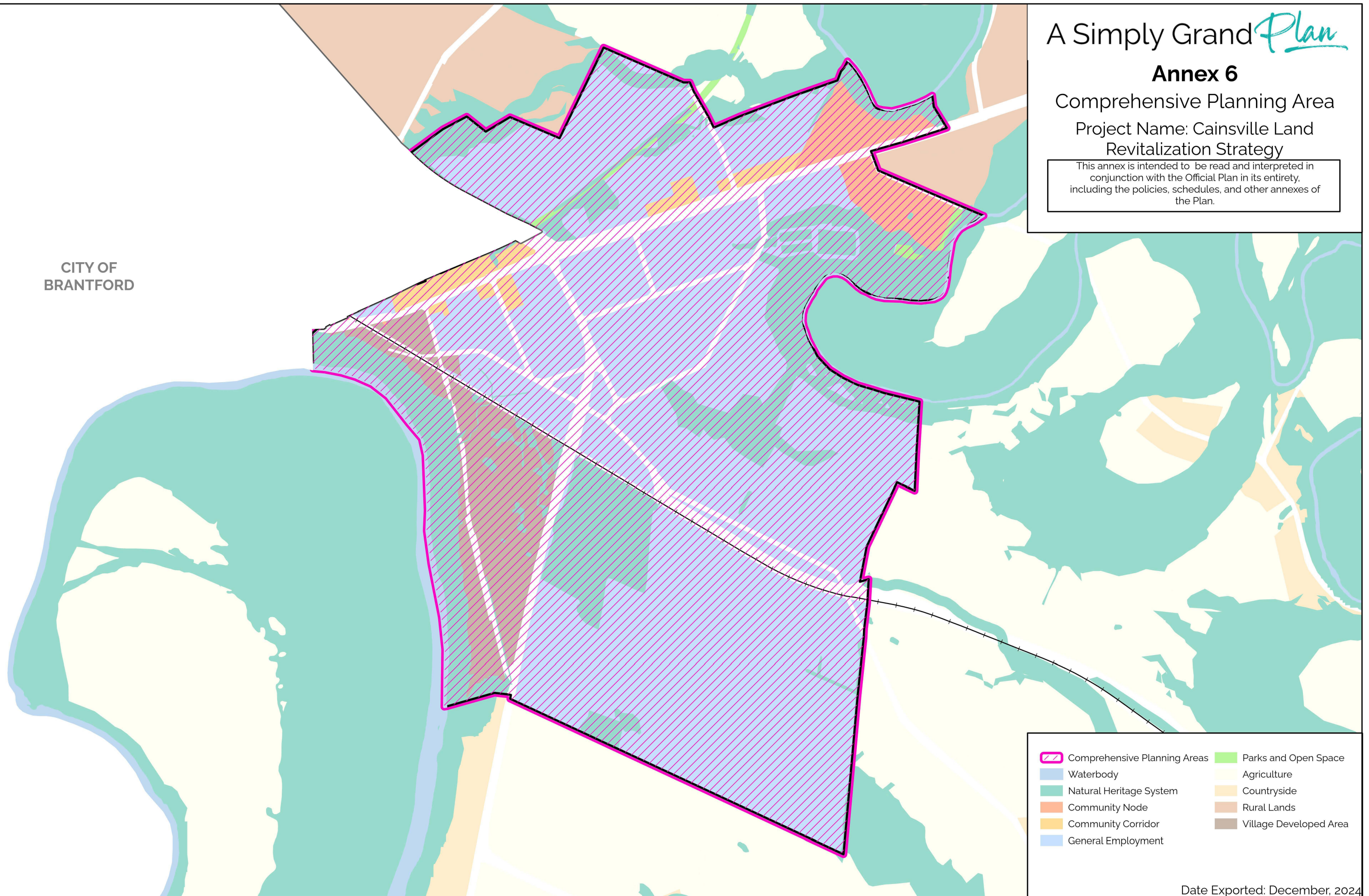
## Annex 6

Comprehensive Planning Area

Project Name: Cainsville Land  
Revitalization Strategy

This annex is intended to be read and interpreted in conjunction with the Official Plan in its entirety, including the policies, schedules, and other annexes of the Plan.

CITY OF  
BRANTFORD



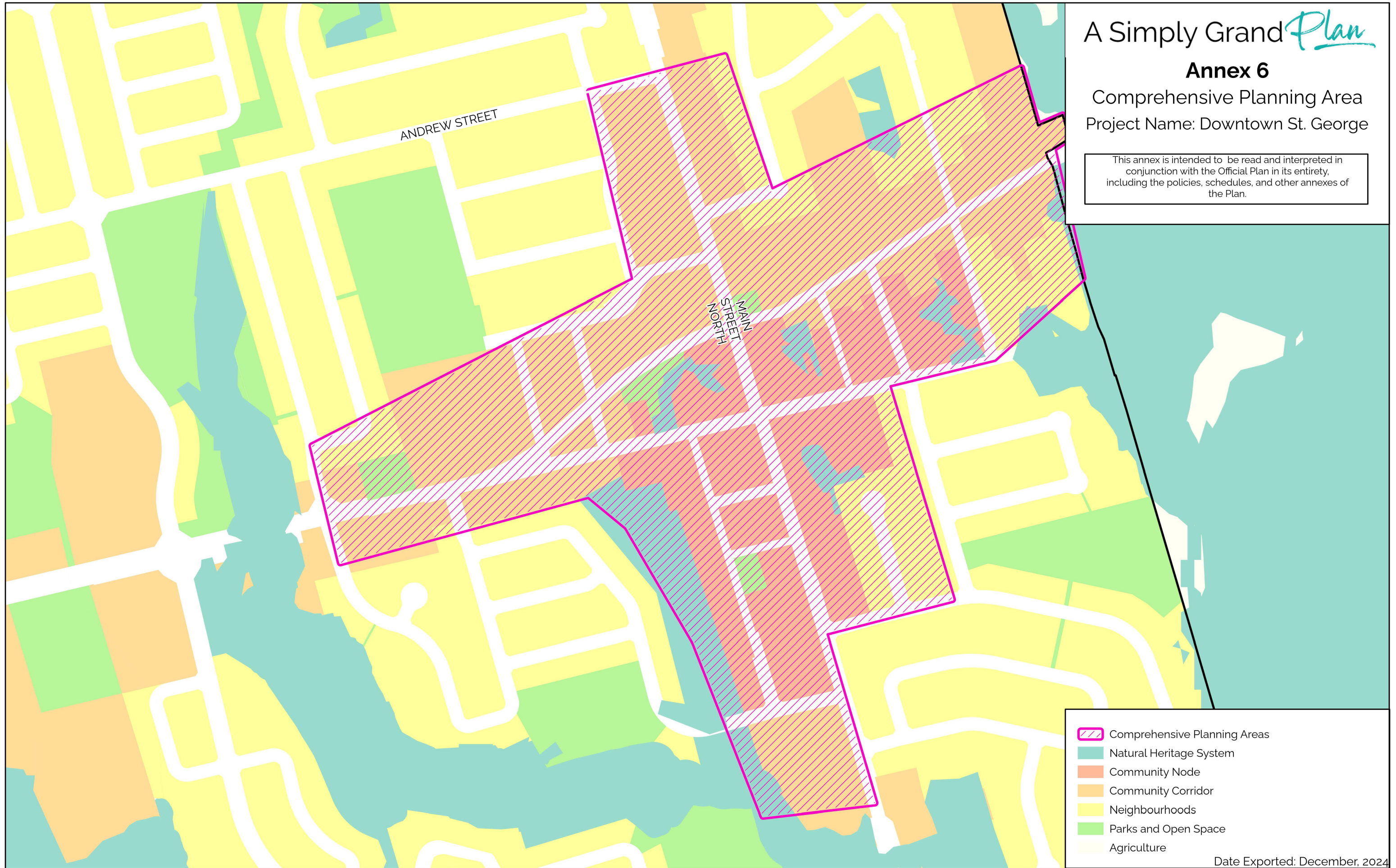
- Comprehensive Planning Areas
- Waterbody
- Natural Heritage System
- Community Node
- Community Corridor
- General Employment
- Parks and Open Space
- Agriculture
- Countryside
- Rural Lands
- Village Developed Area

# A Simply Grand *Plan*

## Annex 6

Comprehensive Planning Area  
Project Name: Downtown St. George

This annex is intended to be read and interpreted in conjunction with the Official Plan in its entirety, including the policies, schedules, and other annexes of the Plan.

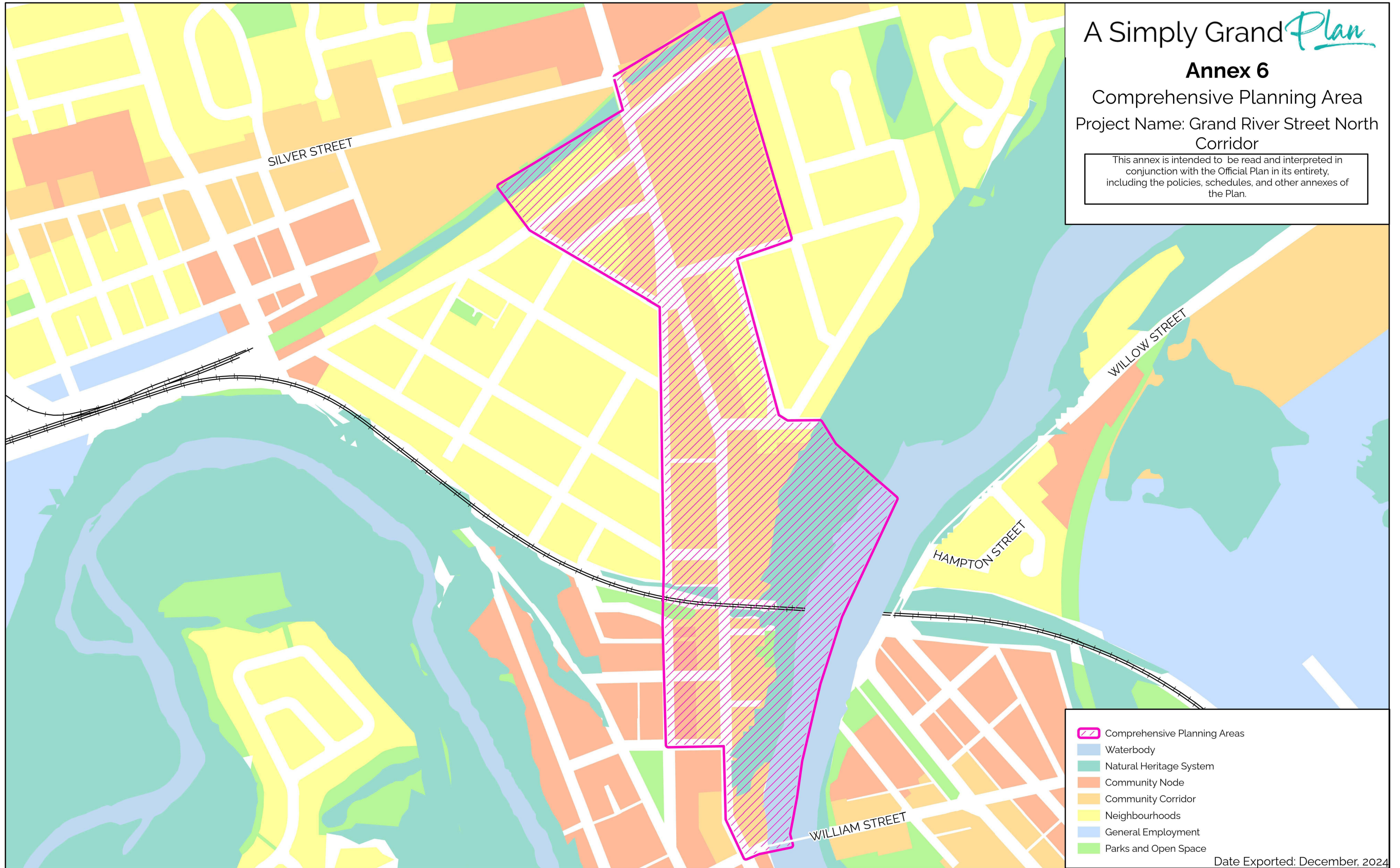


# A Simply Grand *Plan*

## Annex 6

Comprehensive Planning Area  
Project Name: Grand River Street North  
Corridor

This annex is intended to be read and interpreted in conjunction with the Official Plan in its entirety, including the policies, schedules, and other annexes of the Plan.

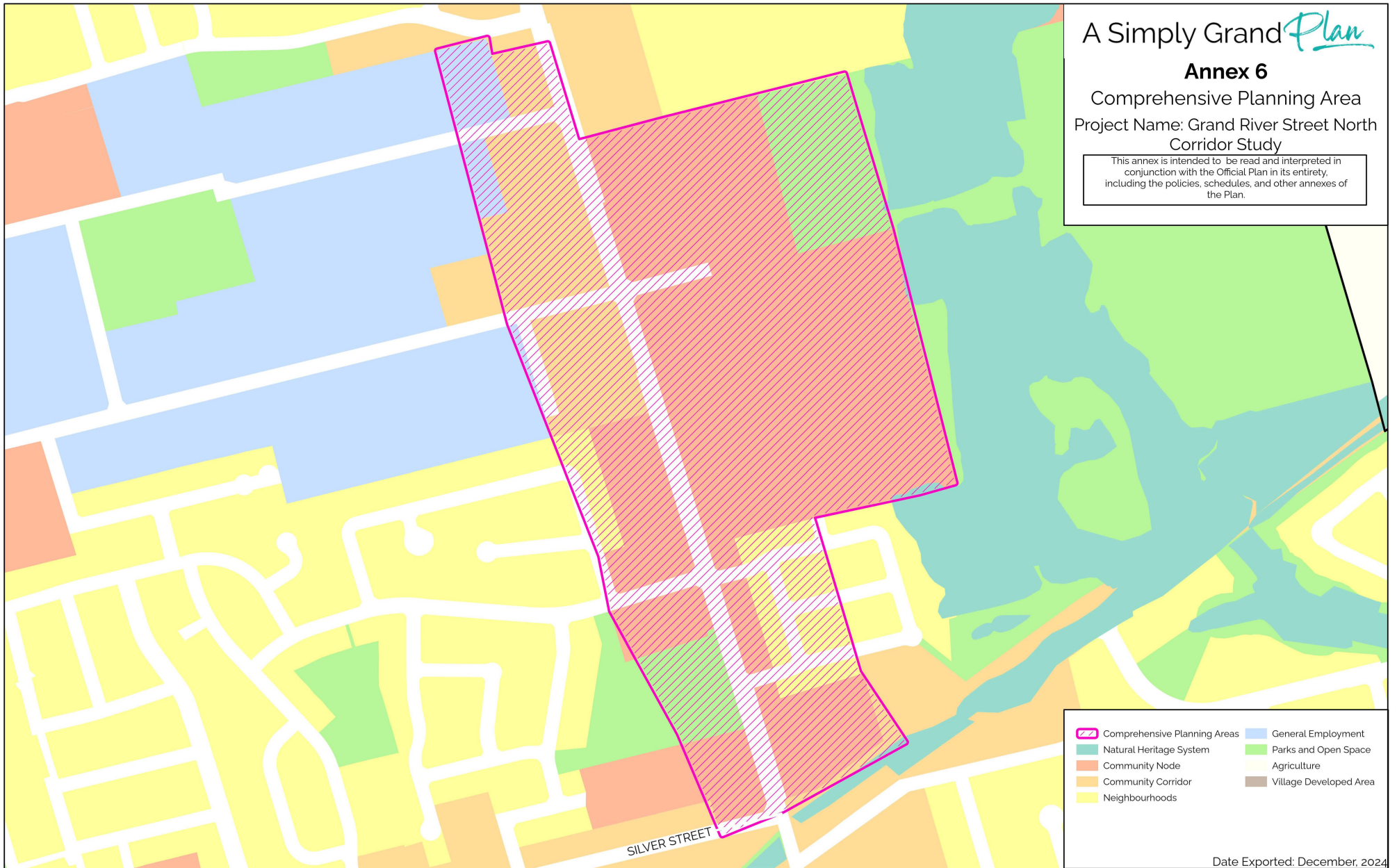


- Comprehensive Planning Areas
- Waterbody
- Natural Heritage System
- Community Node
- Community Corridor
- Neighbourhoods
- General Employment
- Parks and Open Space

**Annex 6**

Comprehensive Planning Area  
Project Name: Grand River Street North  
Corridor Study

This annex is intended to be read and interpreted in conjunction with the Official Plan in its entirety, including the policies, schedules, and other annexes of the Plan.



- |                              |                        |
|------------------------------|------------------------|
| Comprehensive Planning Areas | General Employment     |
| Natural Heritage System      | Parks and Open Space   |
| Community Node               | Agriculture            |
| Community Corridor           | Village Developed Area |
| Neighbourhoods               |                        |

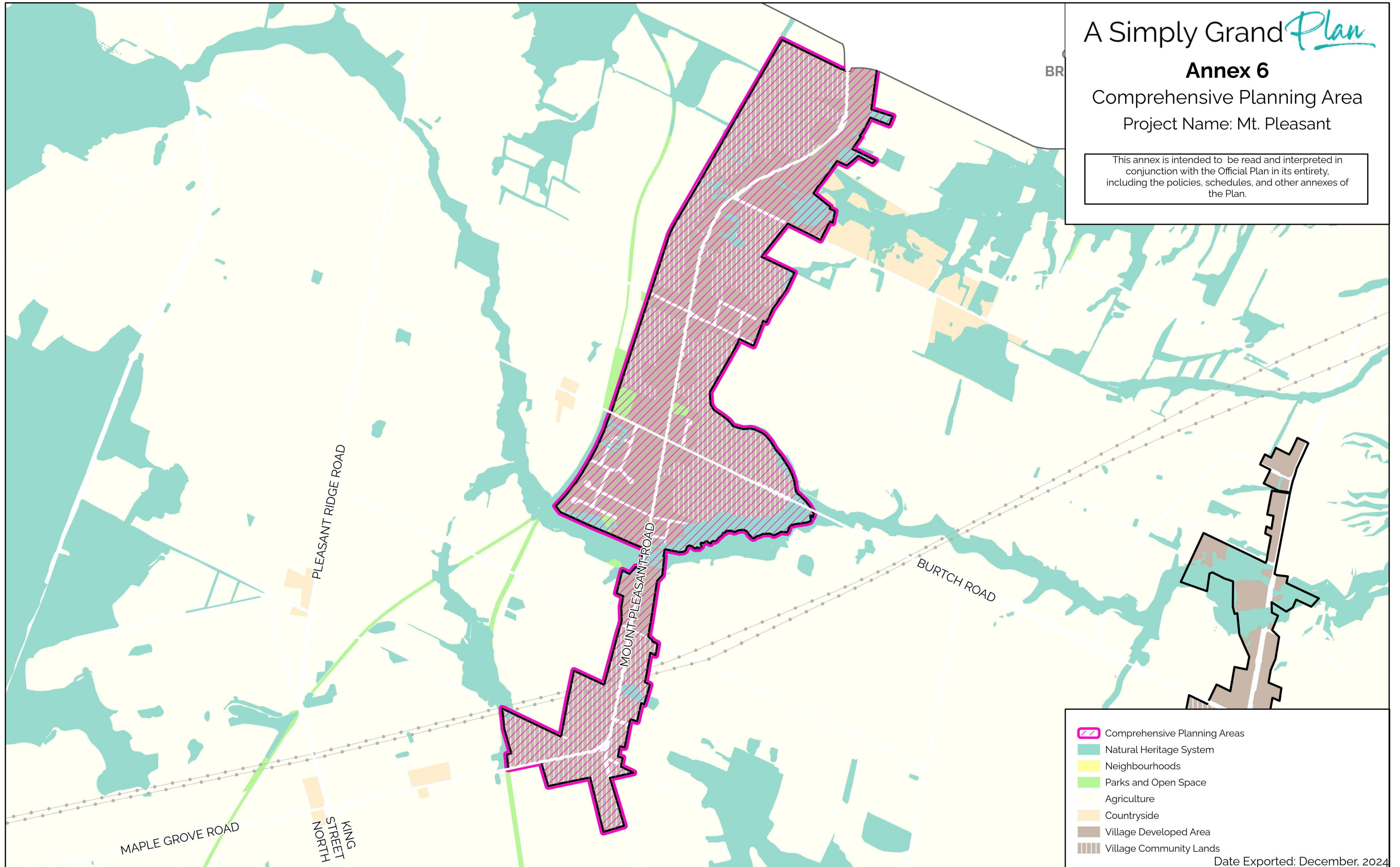
# A Simply Grand *Plan*

## Annex 6

Comprehensive Planning Area

Project Name: Mt. Pleasant

This annex is intended to be read and interpreted in conjunction with the Official Plan in its entirety, including the policies, schedules, and other annexes of the Plan.

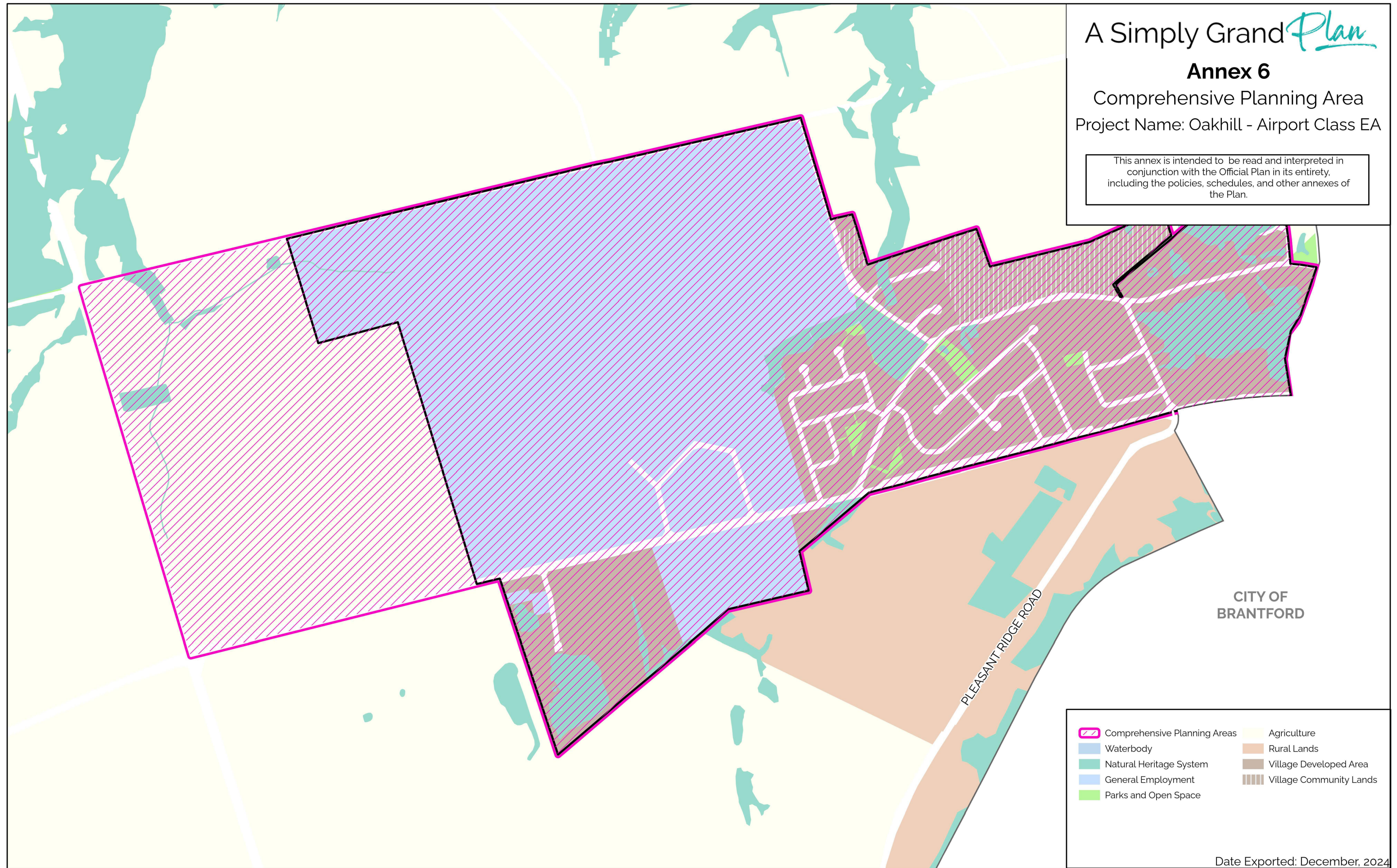


# A Simply Grand *Plan*

## Annex 6

Comprehensive Planning Area  
Project Name: Oakhill - Airport Class EA

This annex is intended to be read and interpreted in conjunction with the Official Plan in its entirety, including the policies, schedules, and other annexes of the Plan.



CITY OF  
BRANTFORD

- |                              |                         |
|------------------------------|-------------------------|
| Comprehensive Planning Areas | Agriculture             |
| Waterbody                    | Rural Lands             |
| Natural Heritage System      | Village Developed Area  |
| General Employment           | Village Community Lands |
| Parks and Open Space         |                         |

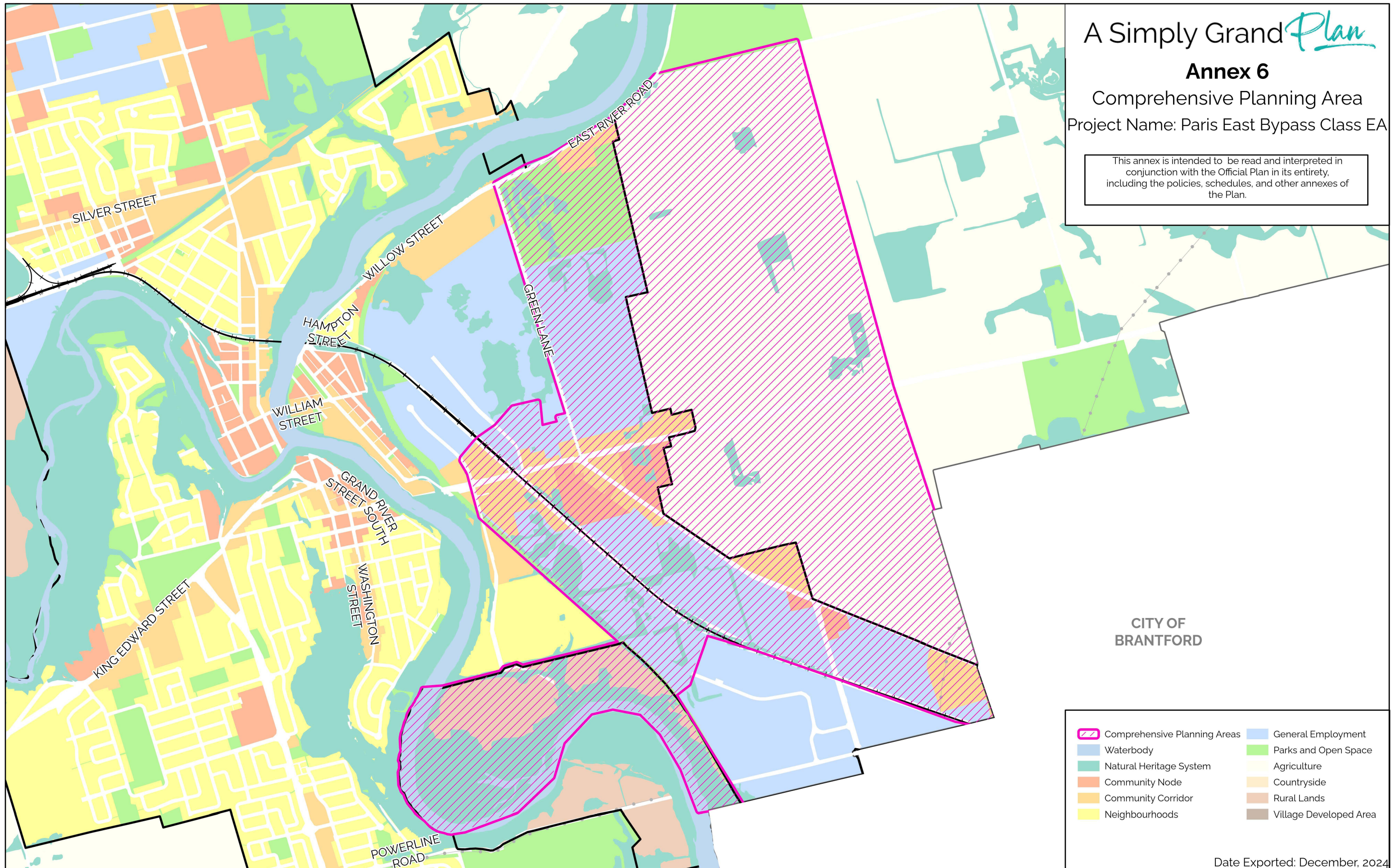
# A Simply Grand *Plan*

## Annex 6

Comprehensive Planning Area

Project Name: Paris East Bypass Class EA

This annex is intended to be read and interpreted in conjunction with the Official Plan in its entirety, including the policies, schedules, and other annexes of the Plan.



CITY OF  
BRANTFORD

- |                              |                        |
|------------------------------|------------------------|
| Comprehensive Planning Areas | General Employment     |
| Waterbody                    | Parks and Open Space   |
| Natural Heritage System      | Agriculture            |
| Community Node               | Countryside            |
| Community Corridor           | Rural Lands            |
| Neighbourhoods               | Village Developed Area |

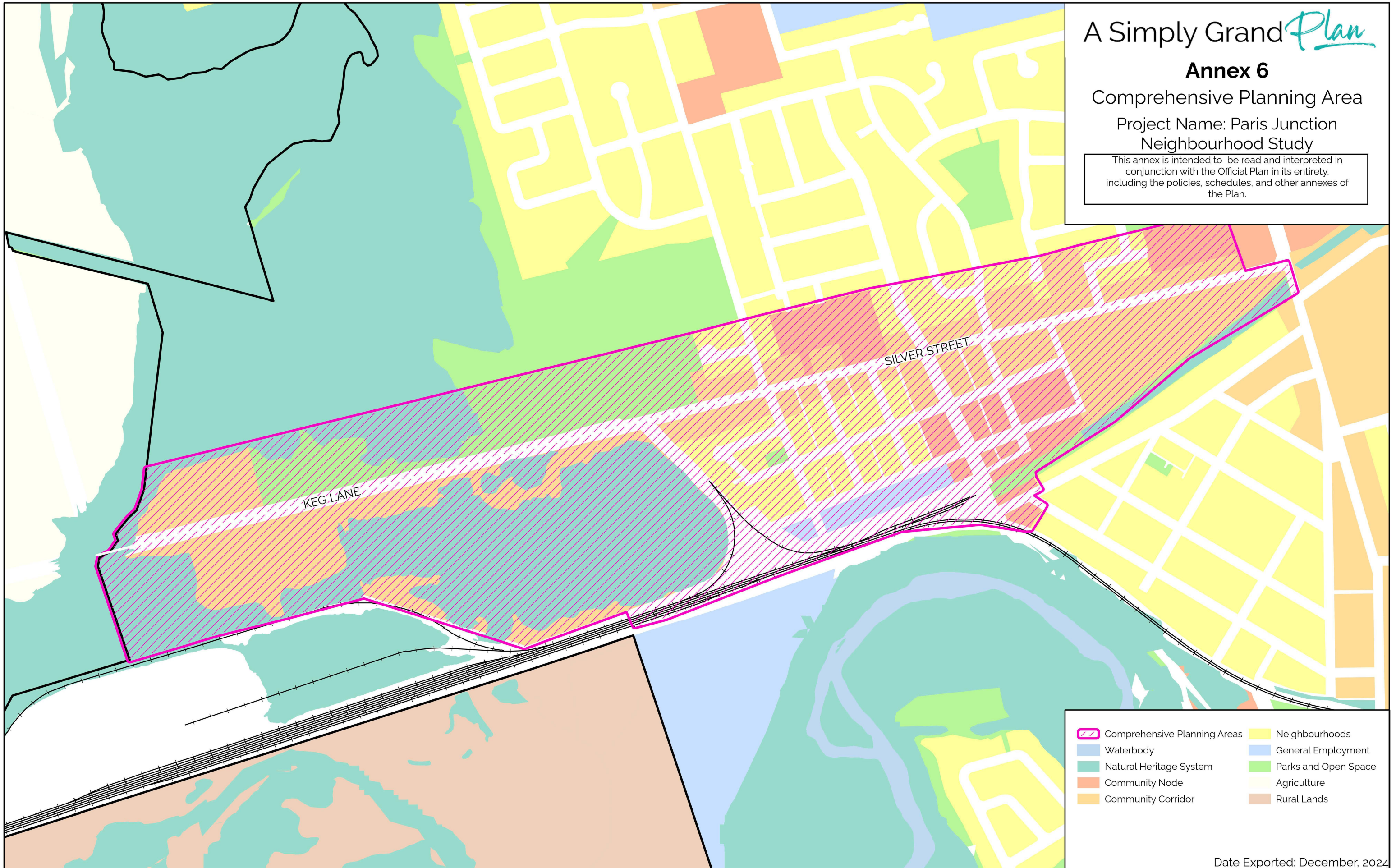
# A Simply Grand *Plan*

## Annex 6

Comprehensive Planning Area

Project Name: Paris Junction  
Neighbourhood Study

This annex is intended to be read and interpreted in conjunction with the Official Plan in its entirety, including the policies, schedules, and other annexes of the Plan.

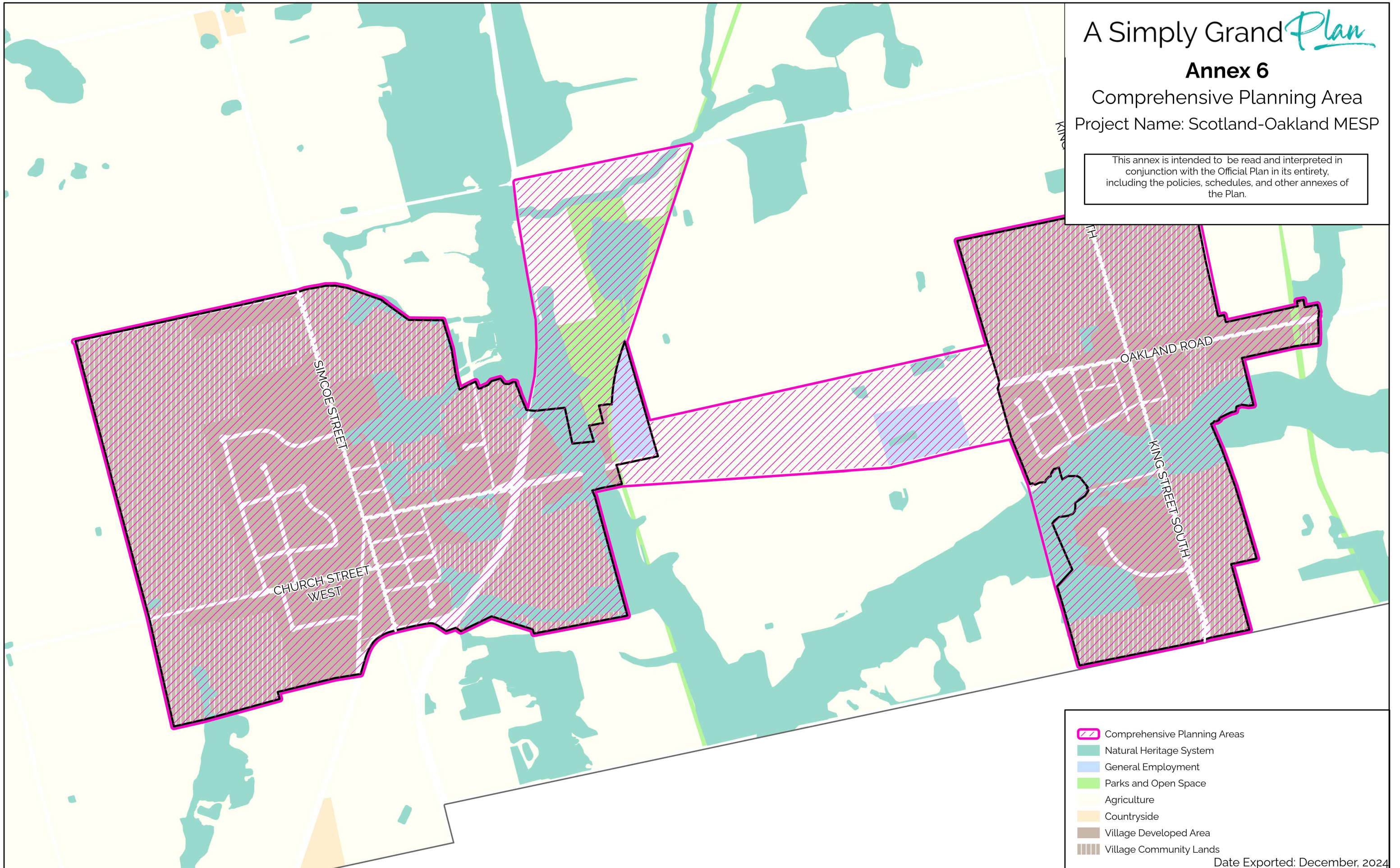


# A Simply Grand *Plan*

## Annex 6

Comprehensive Planning Area  
Project Name: Scotland-Oakland MESP

This annex is intended to be read and interpreted in conjunction with the Official Plan in its entirety, including the policies, schedules, and other annexes of the Plan.



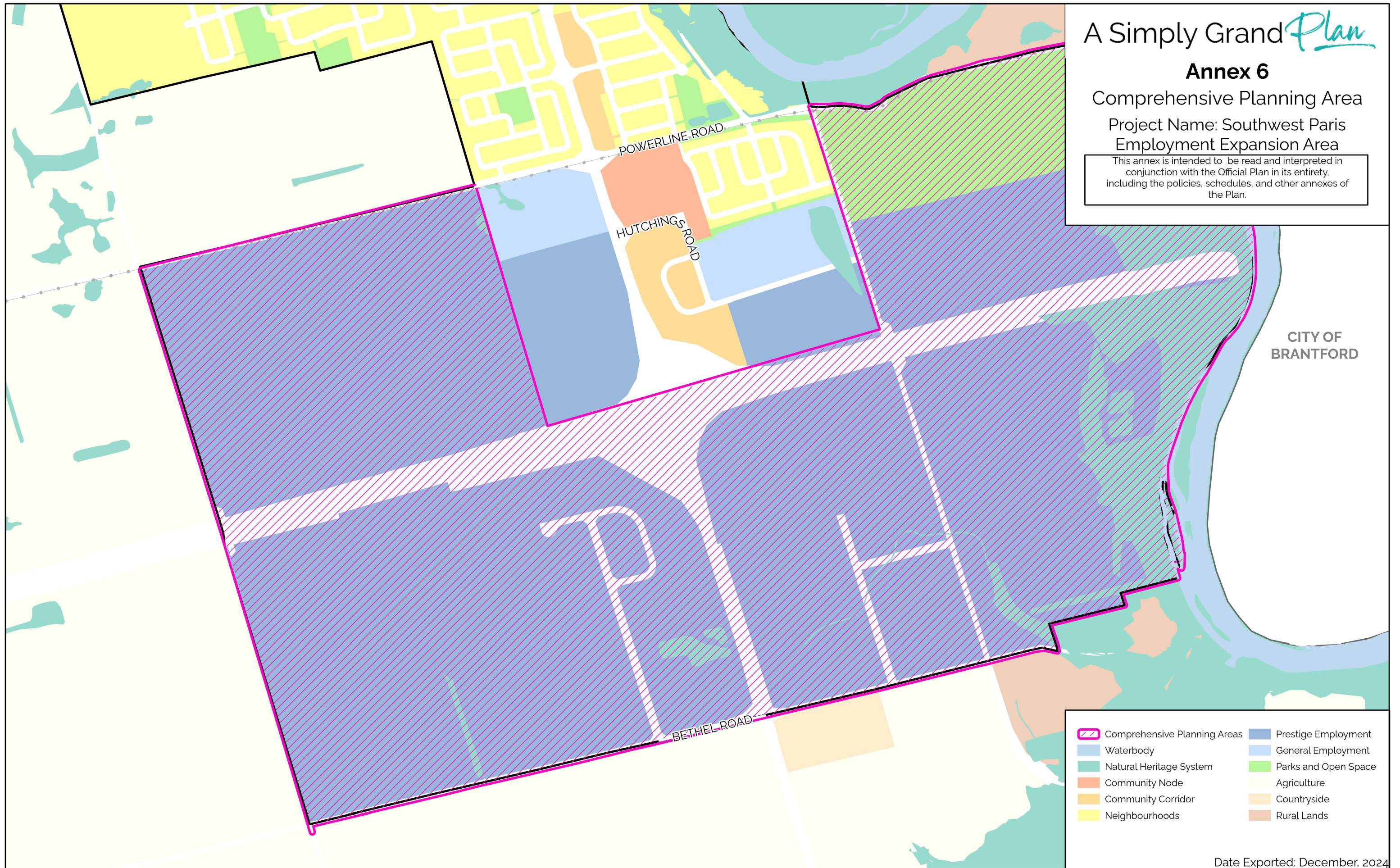
# A Simply Grand *Plan*

## Annex 6

Comprehensive Planning Area

Project Name: Southwest Paris  
Employment Expansion Area

This annex is intended to be read and interpreted in conjunction with the Official Plan in its entirety, including the policies, schedules, and other annexes of the Plan.



CITY OF  
BRANTFORD

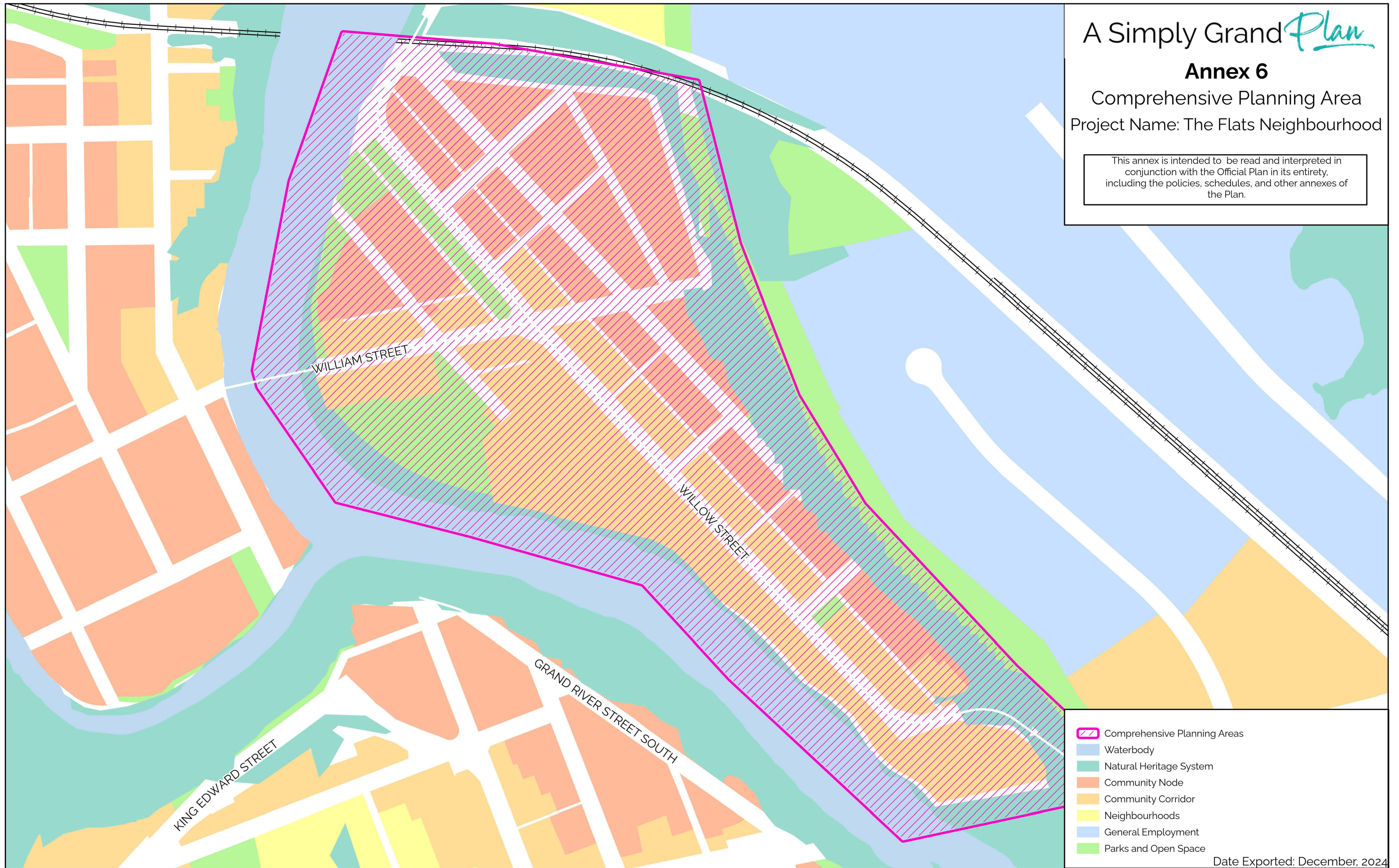
- |                              |                      |
|------------------------------|----------------------|
| Comprehensive Planning Areas | Prestige Employment  |
| Waterbody                    | General Employment   |
| Natural Heritage System      | Parks and Open Space |
| Community Node               | Agriculture          |
| Community Corridor           | Countryside          |
| Neighbourhoods               | Rural Lands          |

# A Simply Grand *Plan*

## Annex 6

Comprehensive Planning Area  
Project Name: The Flats Neighbourhood

This annex is intended to be read and interpreted in conjunction with the Official Plan in its entirety, including the policies, schedules, and other annexes of the Plan.



- Comprehensive Planning Areas
- Waterbody
- Natural Heritage System
- Community Node
- Community Corridor
- Neighbourhoods
- General Employment
- Parks and Open Space

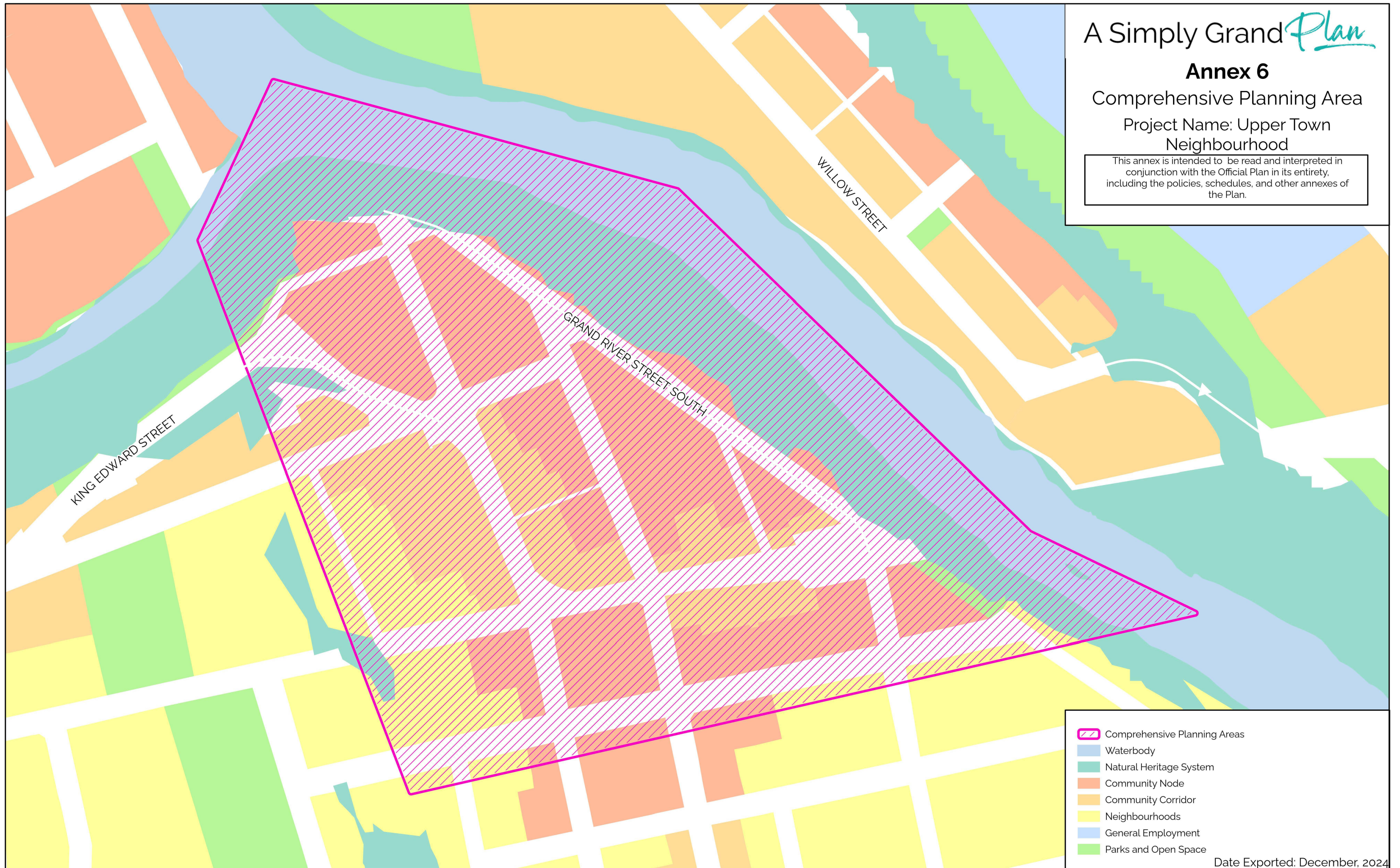
# A Simply Grand *Plan*

## Annex 6

Comprehensive Planning Area

Project Name: Upper Town  
Neighbourhood

This annex is intended to be read and interpreted in conjunction with the Official Plan in its entirety, including the policies, schedules, and other annexes of the Plan.



- Comprehensive Planning Areas
- Waterbody
- Natural Heritage System
- Community Node
- Community Corridor
- Neighbourhoods
- General Employment
- Parks and Open Space