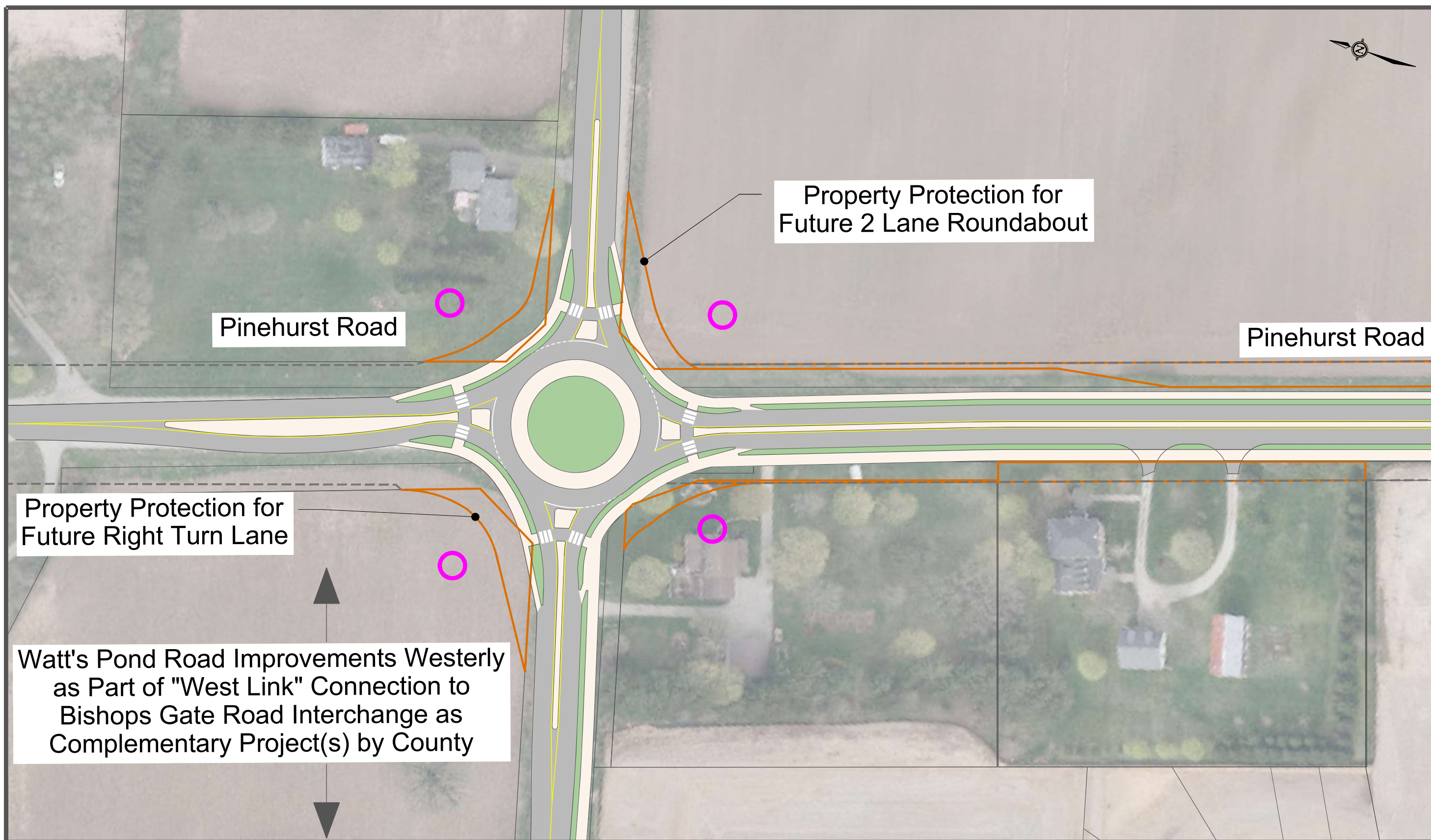


### **13.0 RECOMMENDED PLAN PLATES**

# Recommended Plan - Grand River Street North Corridor

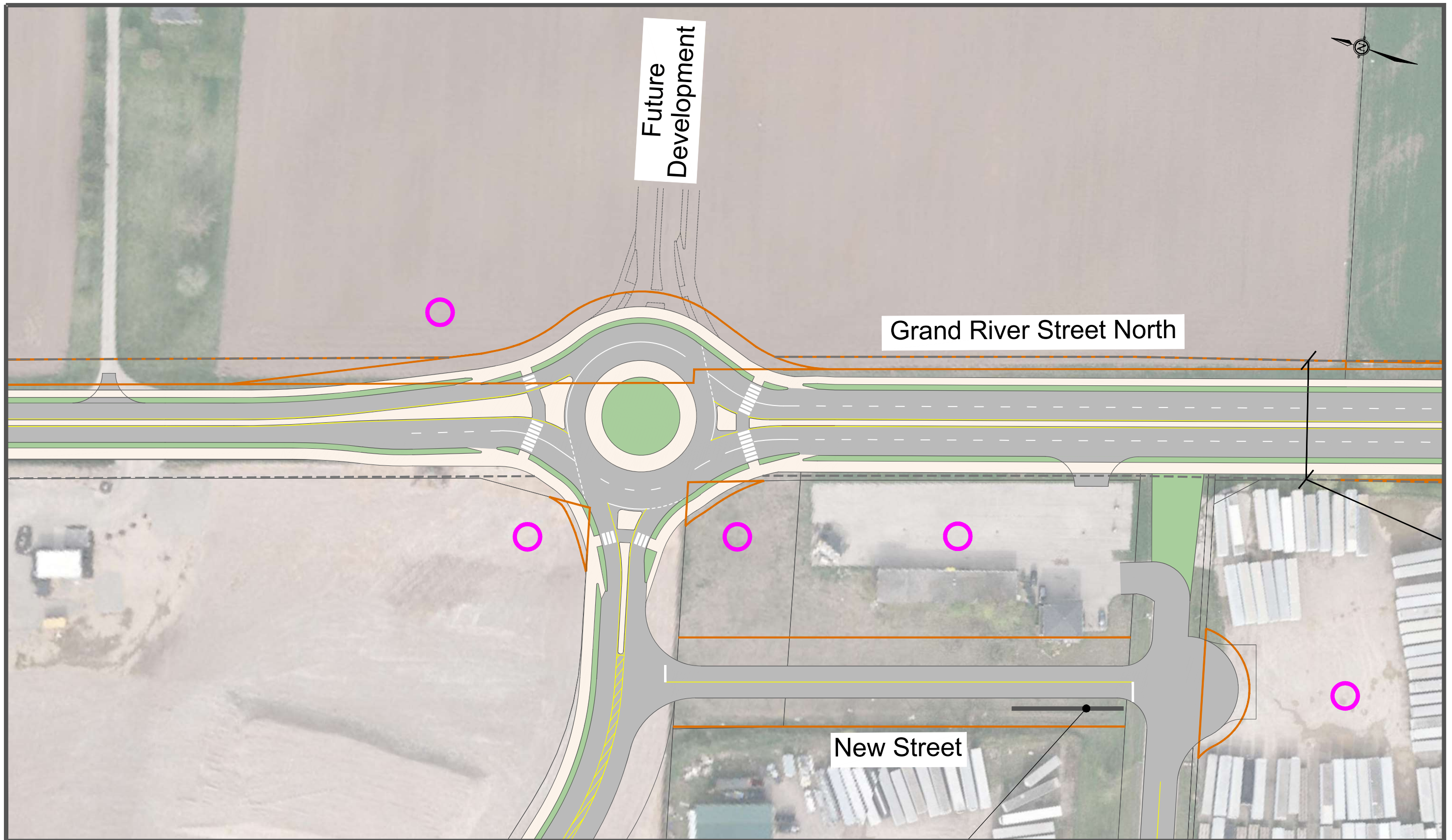
Page 1 of 11 - Project Number: 17-033 - Jul 29, 2019



**Legend:** Property Acquisition Pavement Concrete Landscaping Impacted Properties 32m ROW

# Recommended Plan - Grand River Street North Corridor

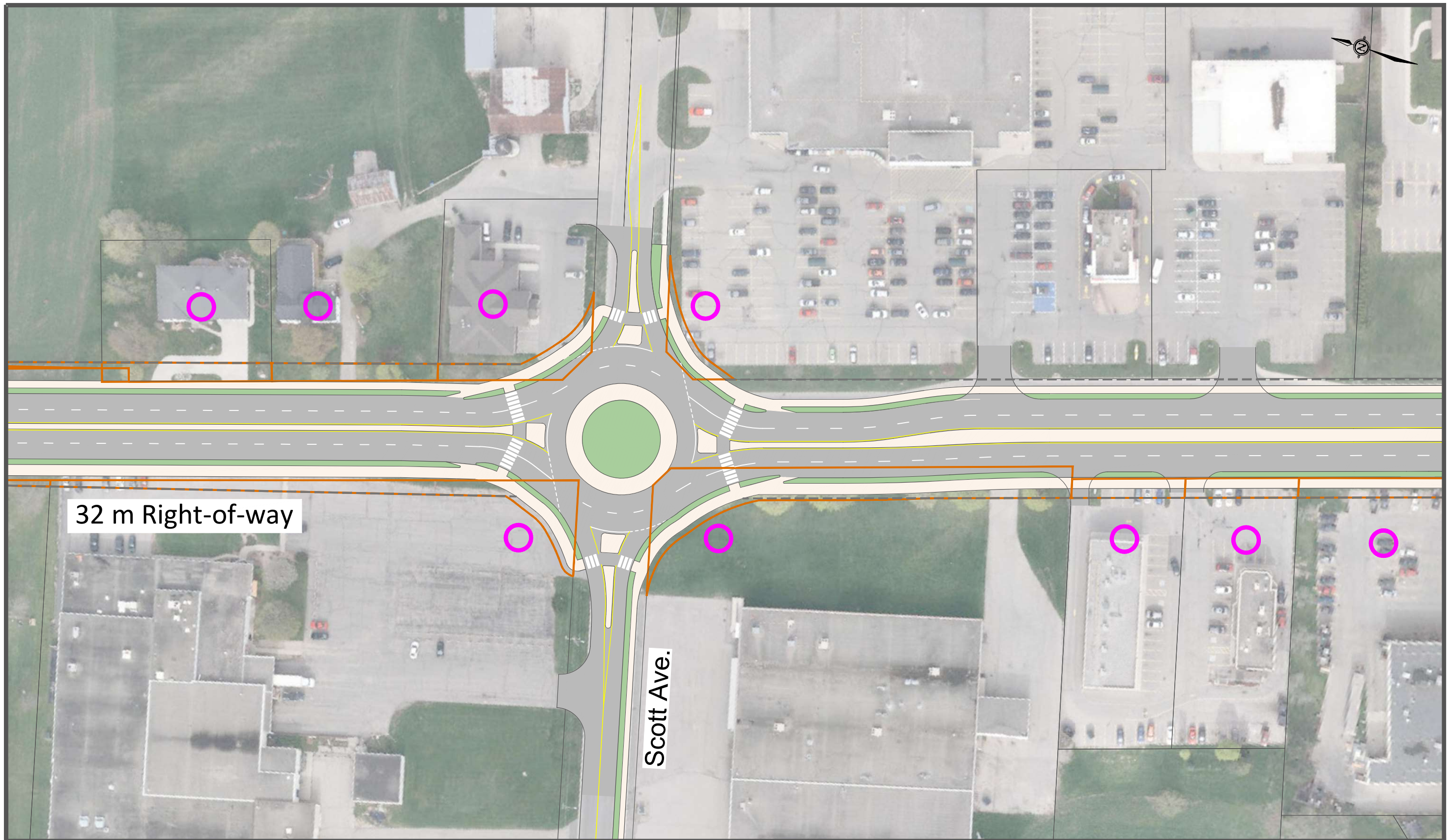
Page 2 of 11 - Project Number: 17-033 - Jul 29, 2019



**Legend:**  Property Acquisition  Pavement  Concrete  Landscaping  Impacted Properties  32m ROW

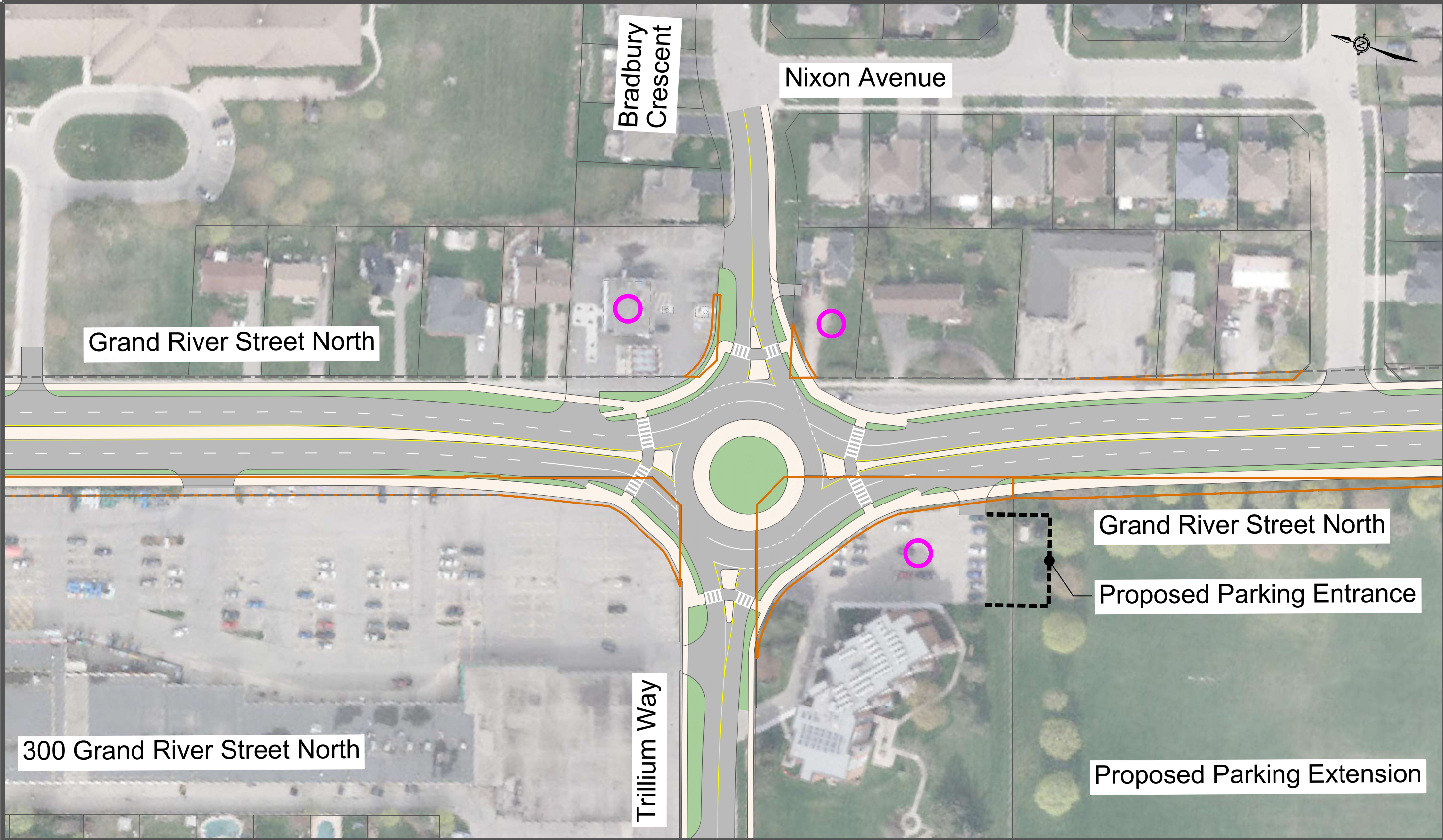
# Recommended Plan - Grand River Street North Corridor

Page 3 of 11 - Project Number: 17-033 - Jul 29, 2019



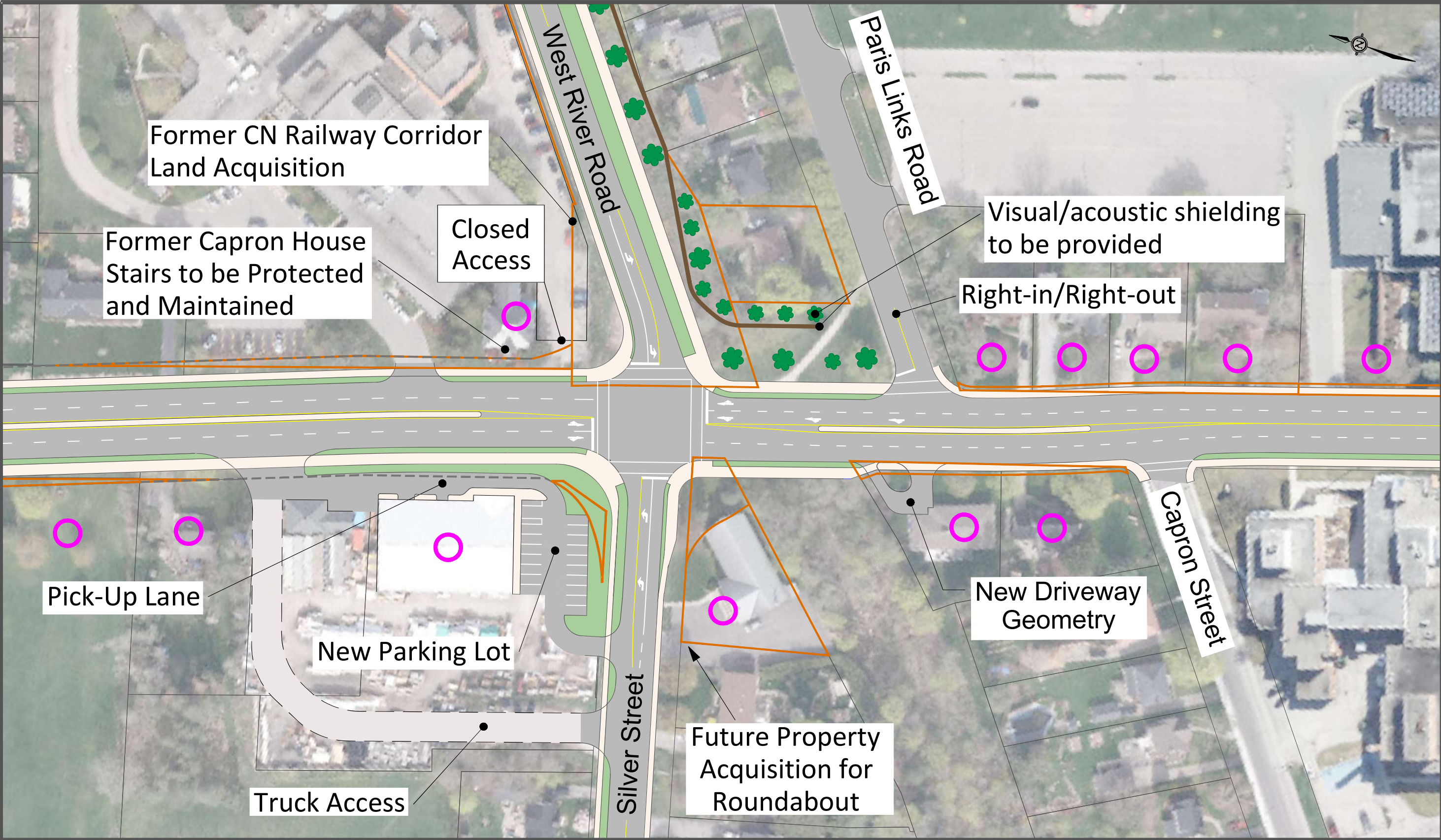
**Legend:**  Property Acquisition  Pavement  Concrete  Landscaping  Impacted Properties  32m ROW

# Recommended Plan - Grand River Street North Corridor



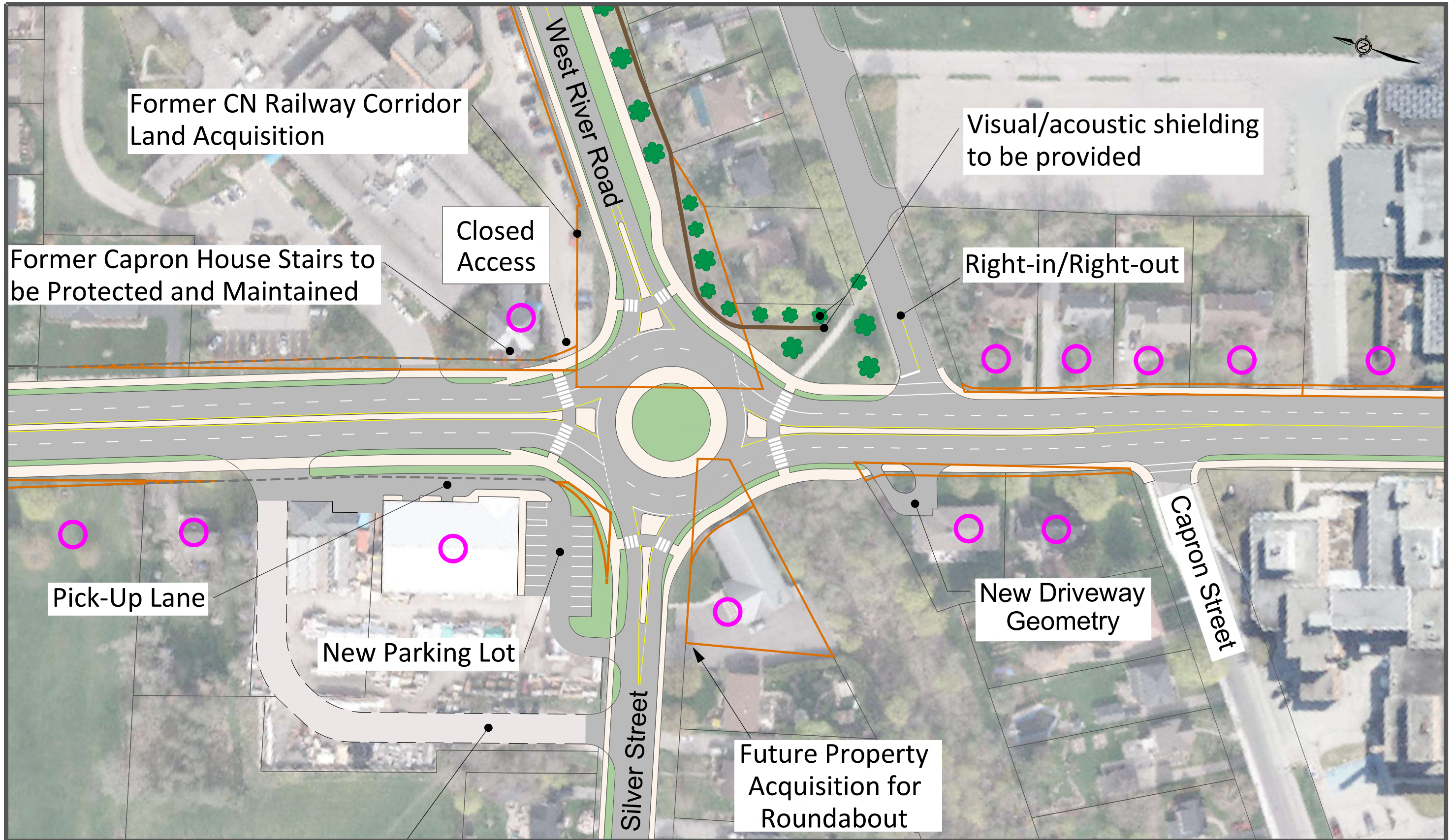
**Legend:**  Property Acquisition  Pavement  Concrete  Landscaping  Impacted Properties  32m ROW

# Interim Recommended Plan - Grand River Street North Corridor



**Legend:**  Property Acquisition  Pavement  Concrete  Landscaping  Impacted Properties  32m ROW

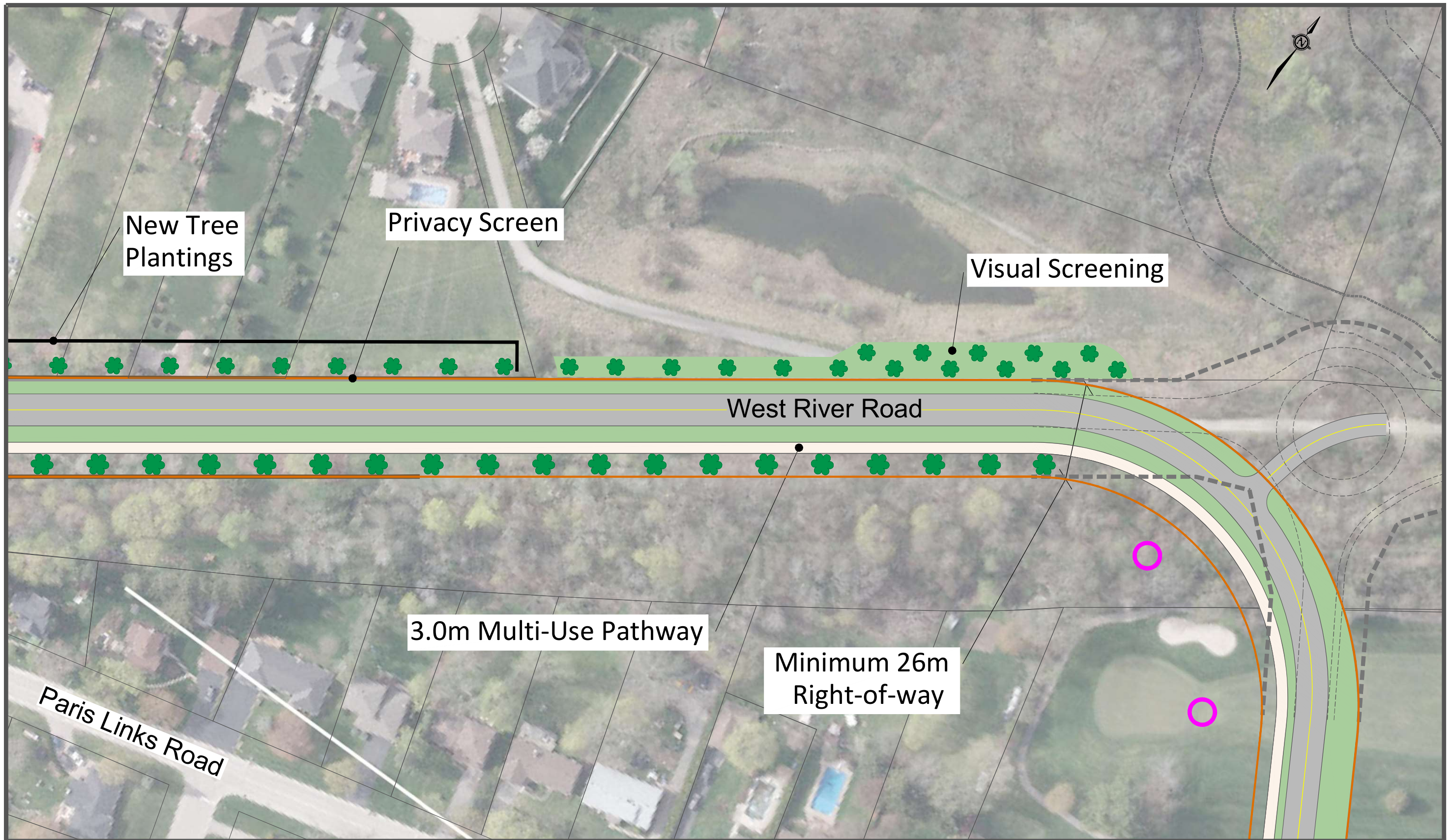
# Ultimate Recommended Plan (When Warranted) - Grand River Street North Corridor



**Legend:**  Property Acquisition  Pavement  Concrete  Landscaping  Impacted Properties  32m ROW

# Recommended Plan - Grand River Street North Corridor

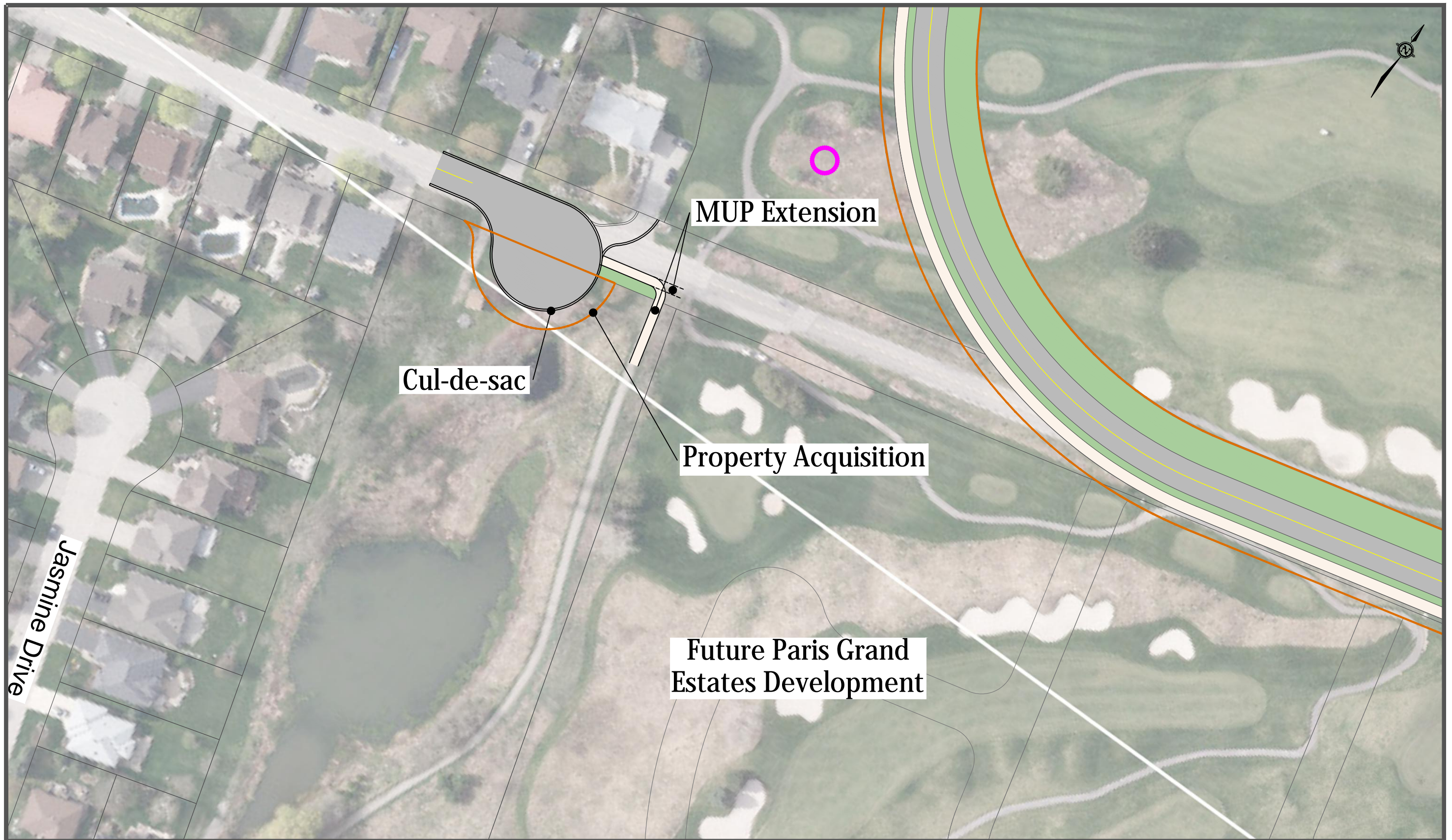
Page 7 of 11 - Project Number: 17-033 - Jul 29, 2019



**Legend:** Property Acquisition Pavement Concrete Landscaping Impacted Properties 32m ROW

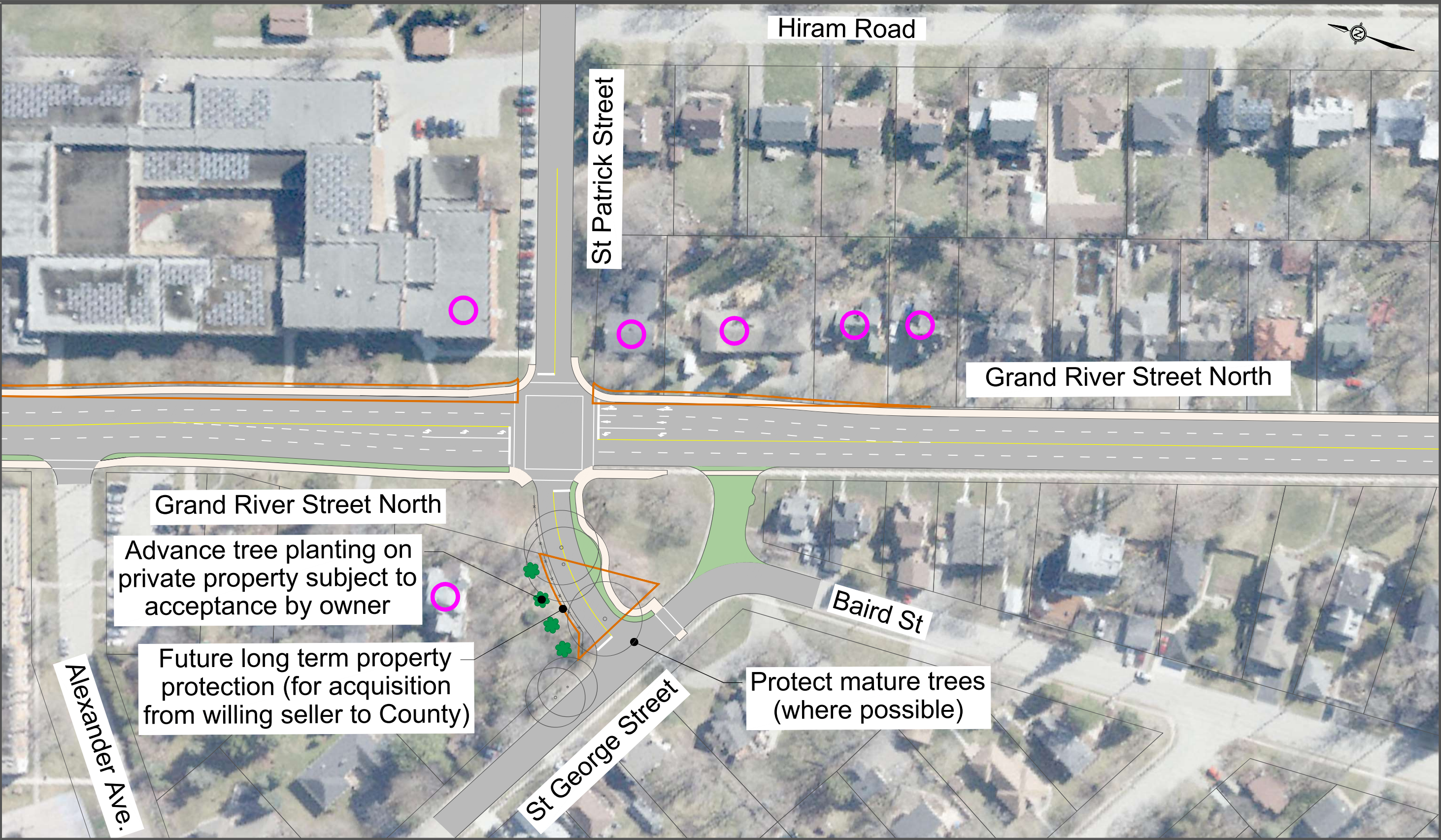
# Recommended Plan - Grand River Street North Corridor

Page 8 of 11 - Project Number: 17-033 - Jul 29, 2019



**Legend:** Property Acquisition Pavement Concrete Landscaping Impacted Properties 32m ROW

# Recommended Plan - Grand River Street North Corridor



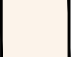




**Legend:** Property Acquisition Pavement Concrete Landscaping Impacted Properties 32m ROW

# Recommended Plan - Grand River Street North Corridor

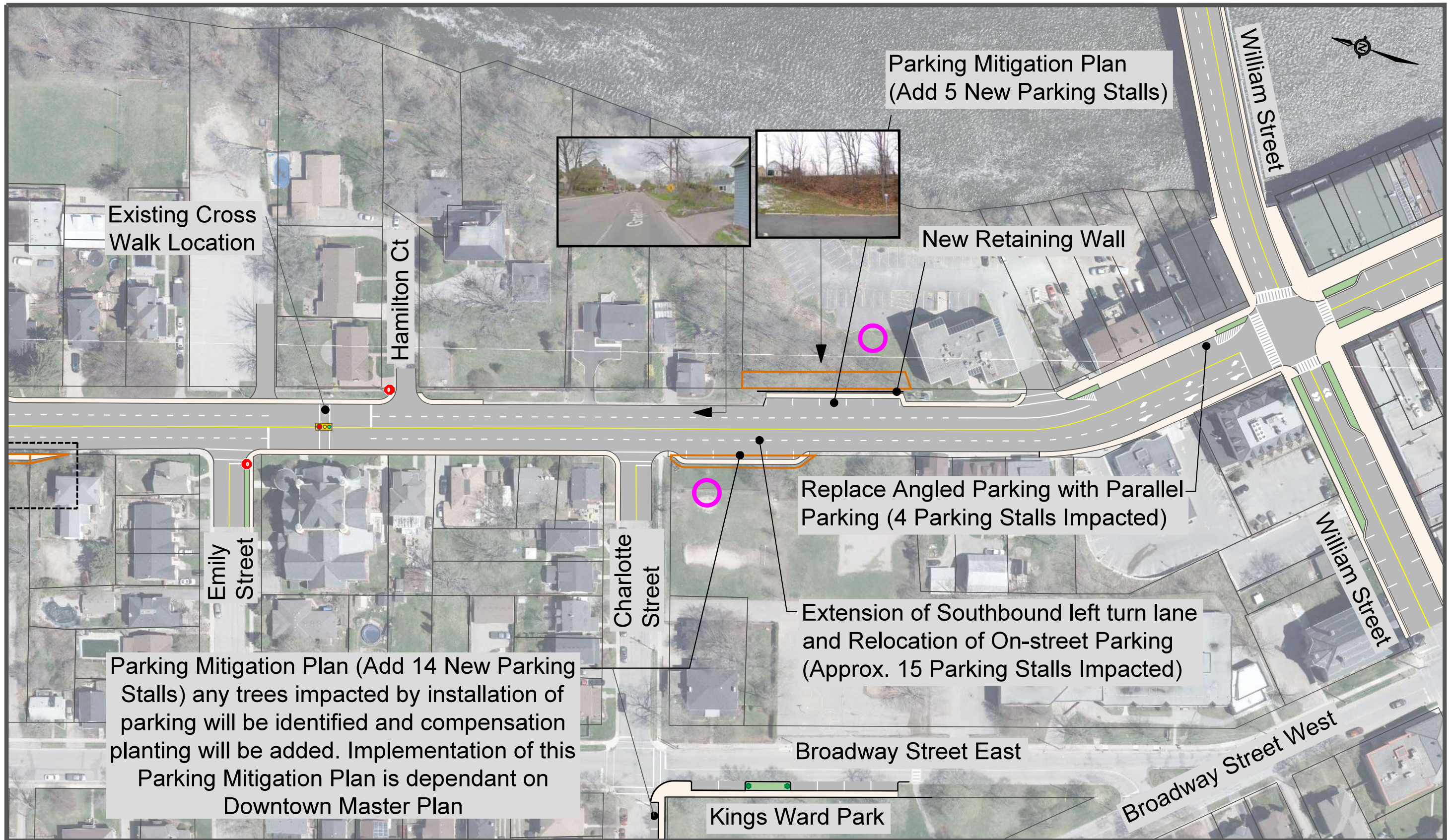
Page 10 of 11 - Project Number: 17-033 - Jul 29, 2019



**Legend:**  Property Acquisition  Pavement  Concrete  Landscaping  Impacted Properties

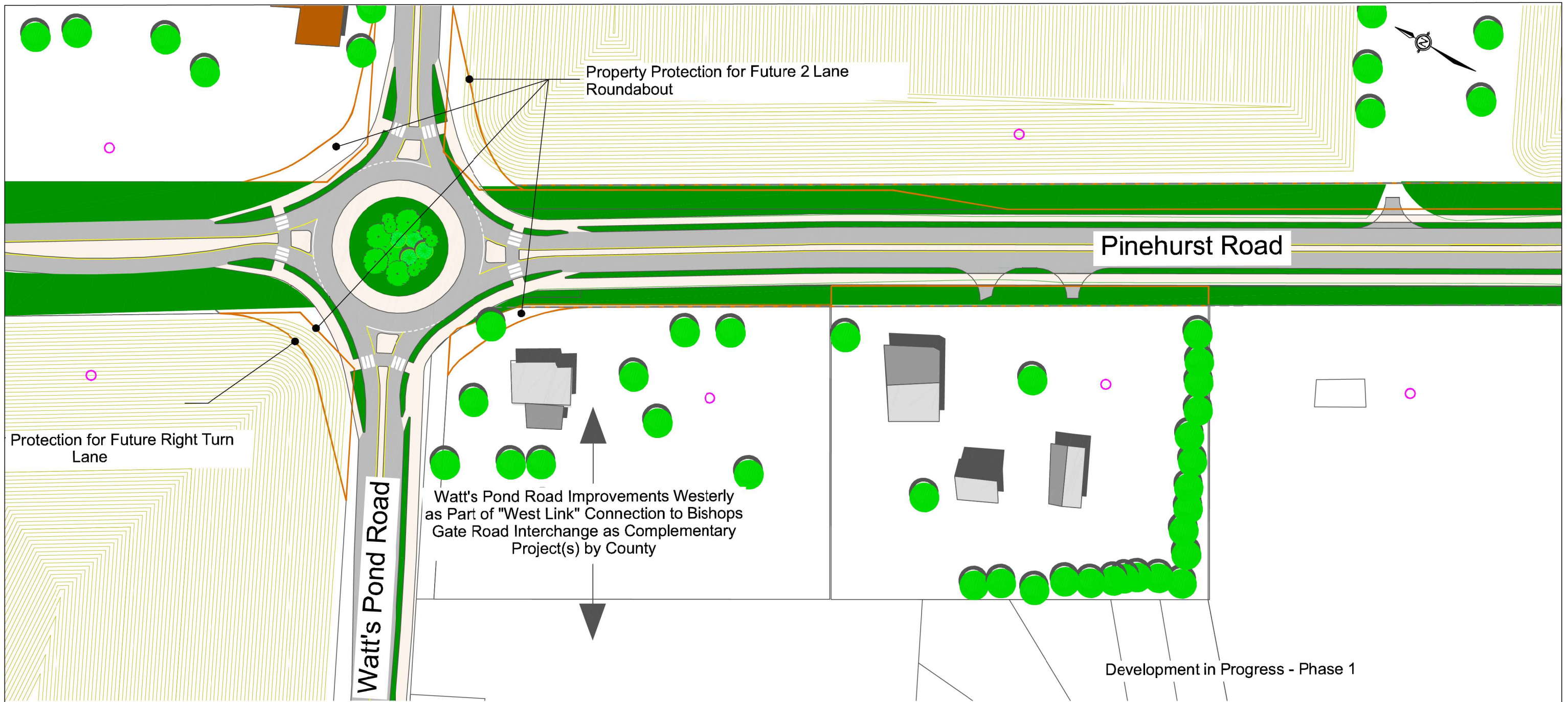
# Recommended Plan - Grand River Street North Corridor

Page 11 of 11 - Project Number: 17-033 - Jul 29, 2019



**Legend:**  Property Acquisition  Pavement  Concrete  Landscaping  Impacted Properties

#### **14.0 RECOMMENDED PLAN URBAN DESIGN PLAN**



**Legend:** □ Property Acquisition ■ Pavement ■ Concrete ● Landscaping ○ Impacted Properties     32m ROW

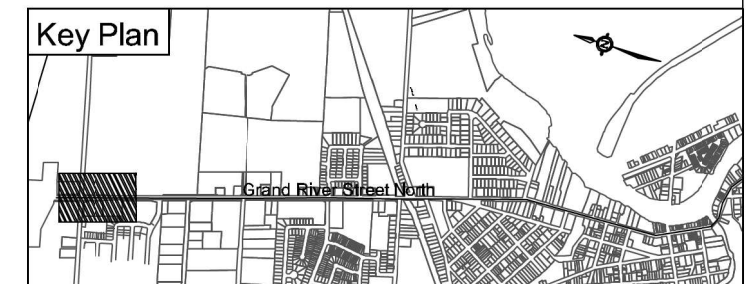
# Recommended Plan - Grand River Street North Corridor

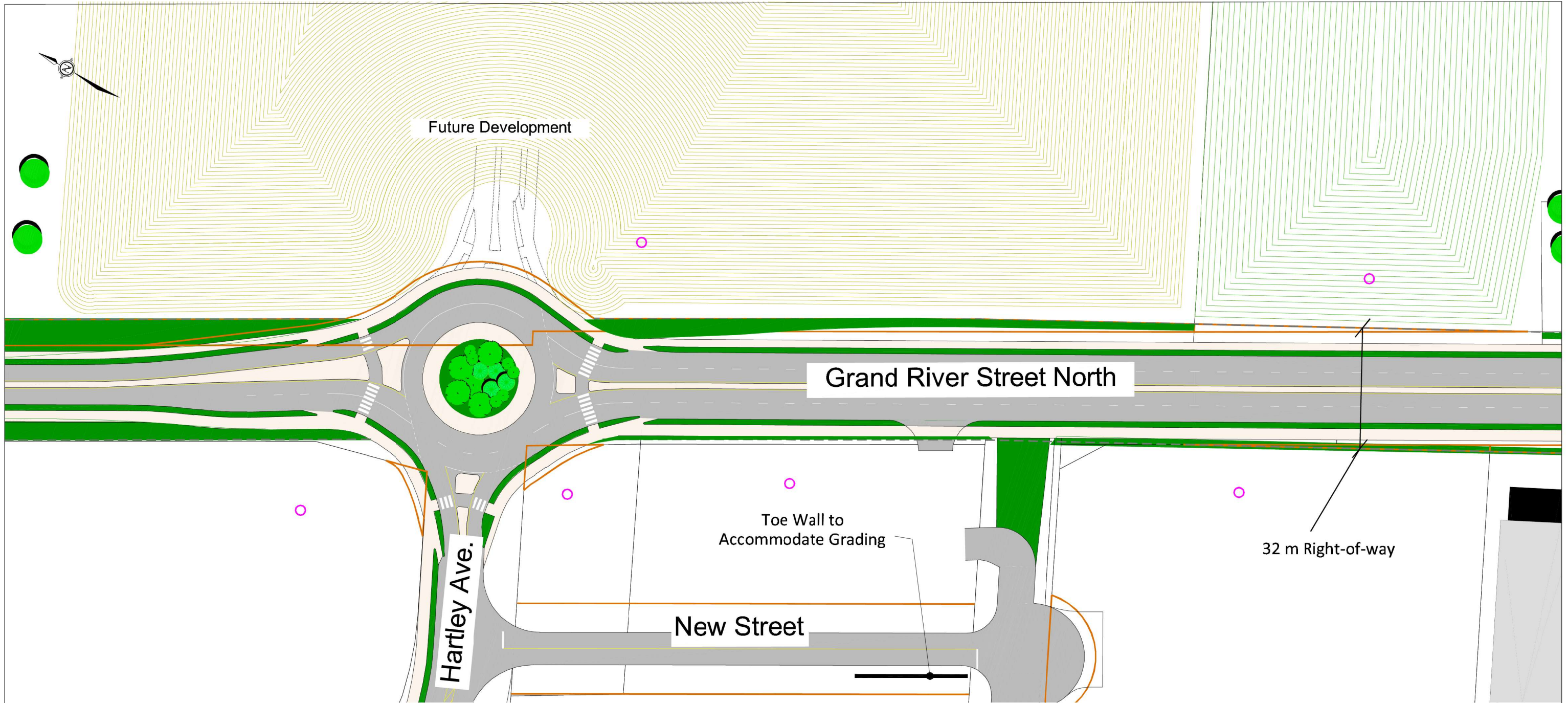
## Plate 1 - Watt's Pond Road

Project Number: 17-033

October, 2019

1:1000

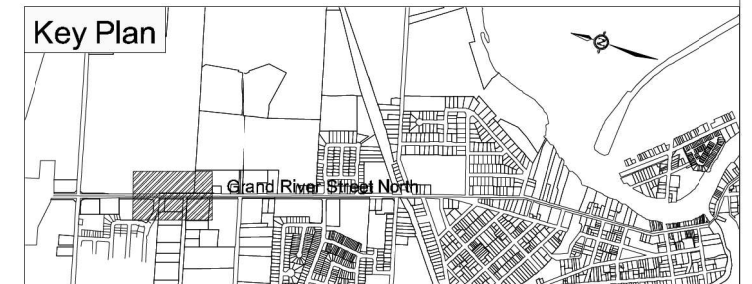


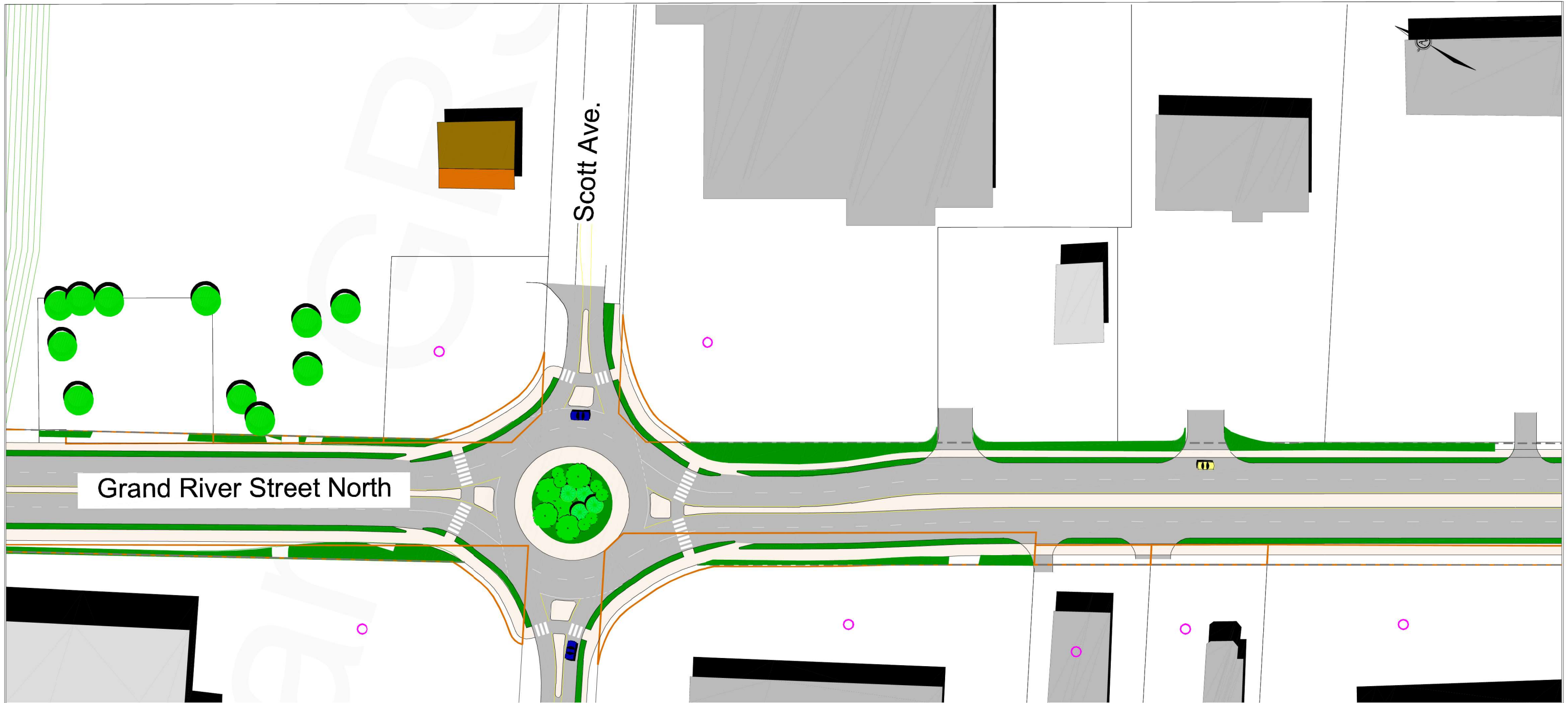


**Legend:**  Property Acquisition  Pavement  Concrete  Landscaping  Impacted Properties  32m ROW

# Recommended Plan - Grand River Street North Corridor Plate 2 - Hartley Avenue

Project Number: 17-033 October, 2019  
1:1000





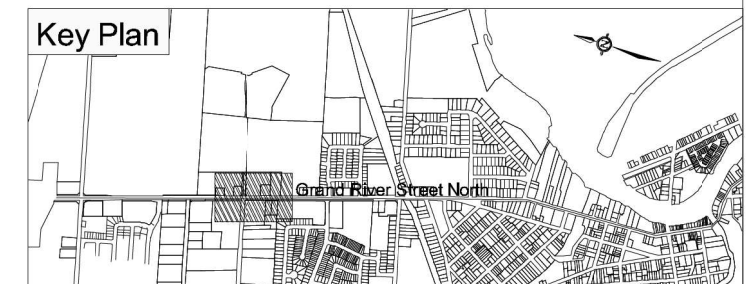
**Legend:**  Property Acquisition  Pavement  Concrete  Landscaping  Impacted Properties  32m ROW

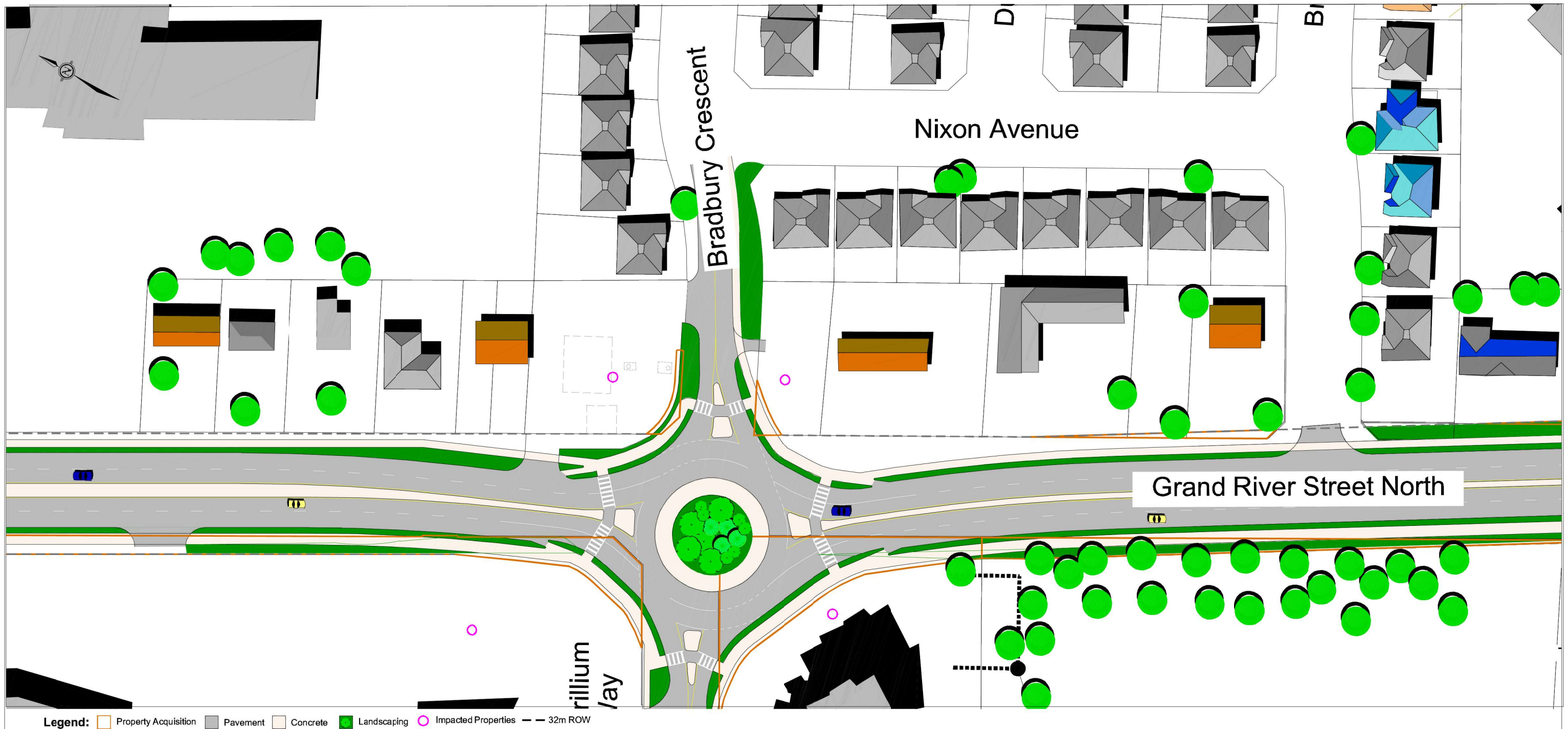
# Recommended Plan - Grand River Street North Corridor Plate 3 - Scott Avenue

Project Number: 17-033

October, 2019

1:1000





Legend: ■ Property Acquisition ■ Pavement ■ Concrete ■ Landscaping ○ Impacted Properties  32m ROW

# Recommended Plan - Grand River Street North Corridor Plate 4 - Trillium Way

Project Number: 17-033 October, 2019

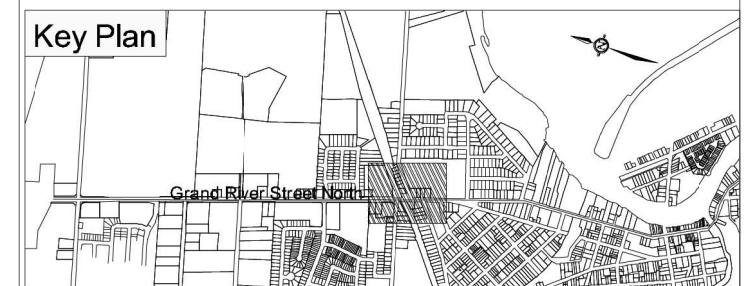
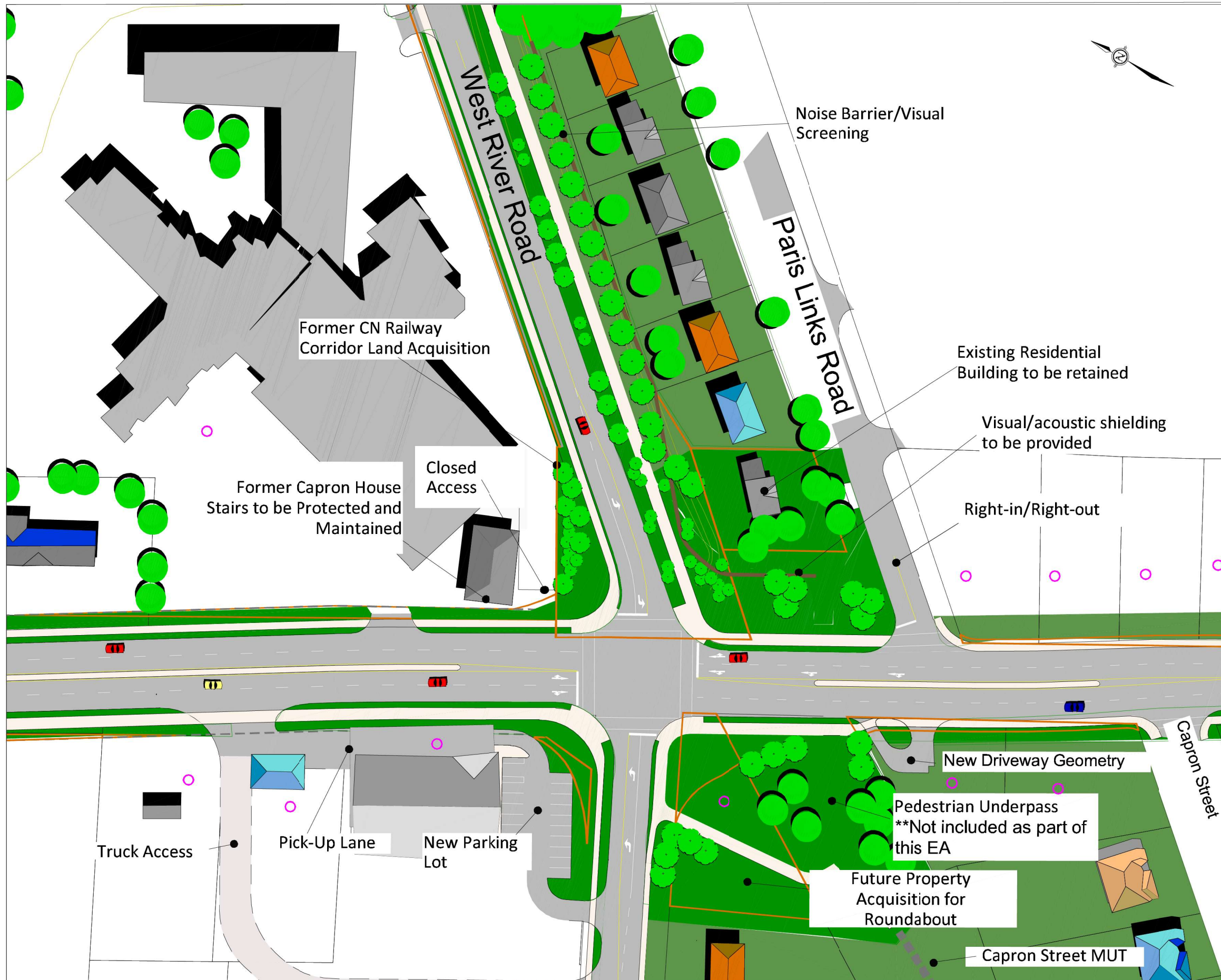
1:1000



# Interim Recommended Plan - Grand River Street North Corridor Plate 5A - West River Road/ Silver St.

Project Number: 17-033  
 October, 2019  
 1:1000

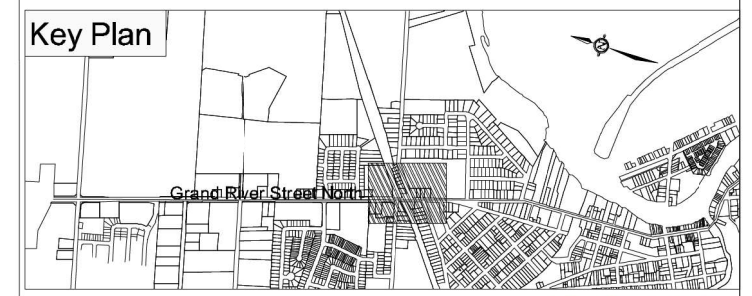
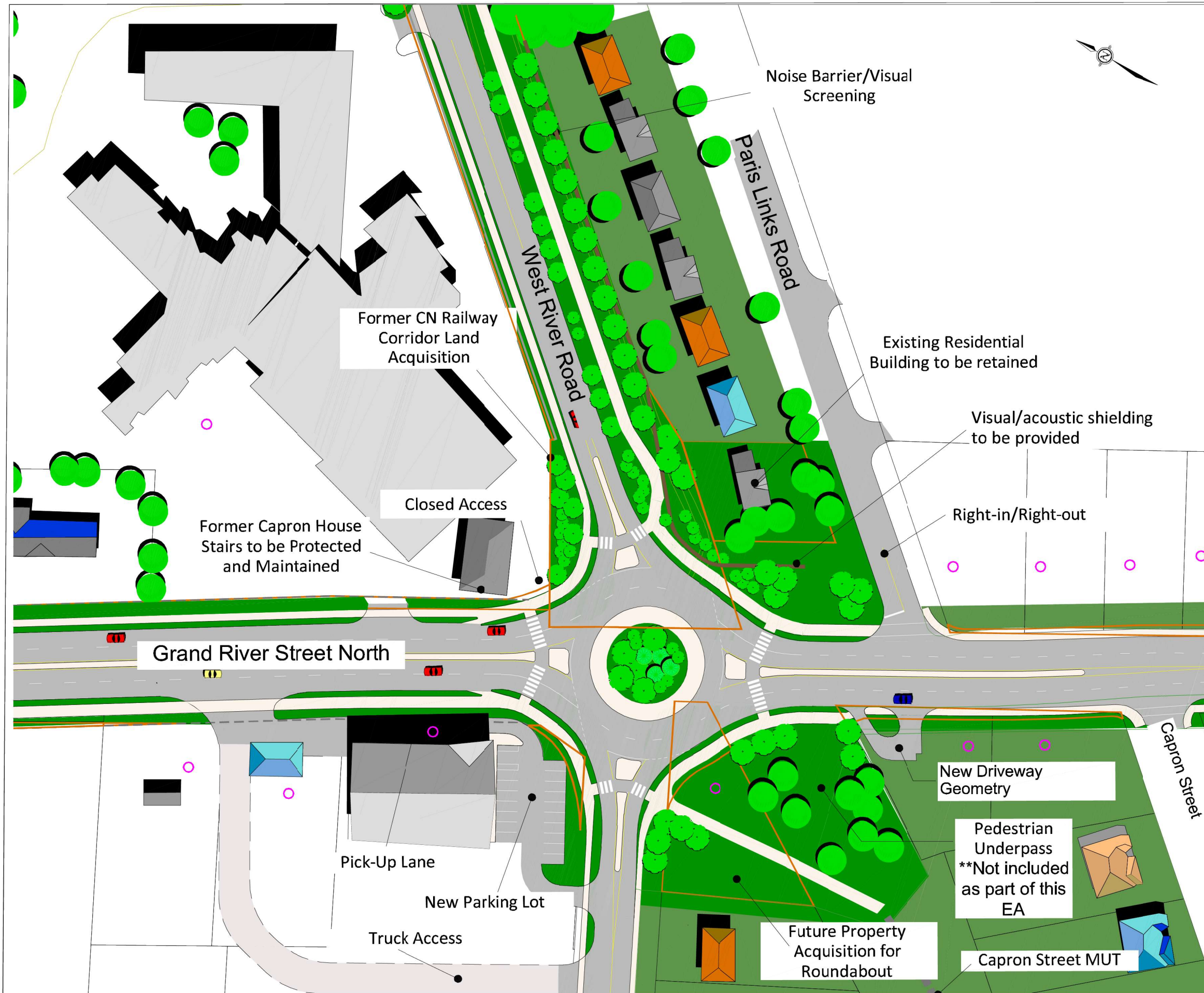
- Legend:**
- Property Acquisition
  - Pavement
  - Concrete
  - Landscaping
  - Impacted Properties
  - 32m ROW



# Ultimate Recommended Plan (when warranted) Grand River Street North Corridor Plate 5B - West River Road/ Silver St.

Project Number: 17-033  
October, 2019  
1:1000

- Legend:**
- Property Acquisition
  - Pavement
  - Concrete
  - Landscaping
  - Impacted Properties
  - 32m ROW

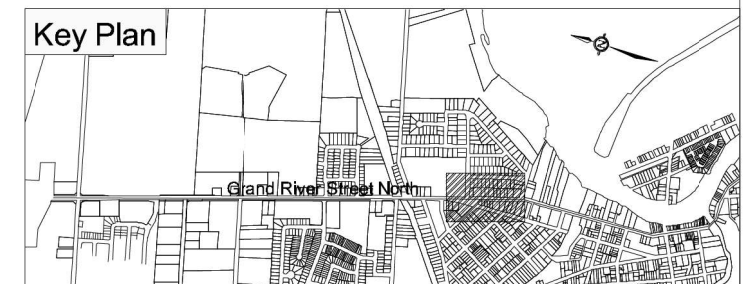




**Legend:**  Property Acquisition  Pavement  Concrete  Landscaping  Impacted Properties  32m ROW

# Recommended Plan - Grand River Street North Corridor Plate 6 - Homestead Road

Project Number: 17-033 October, 2019  
1:1000

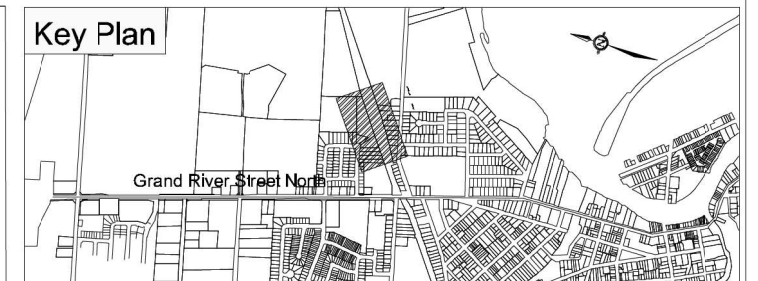
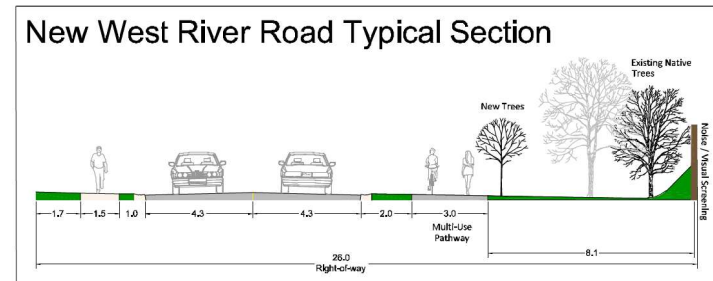




Legend:  Property Acquisition  Pavement  Concrete  Landscaping  Impacted Properties  32m ROW

# Recommended Plan - Grand River Street North Corridor Plate 7 - West River Road

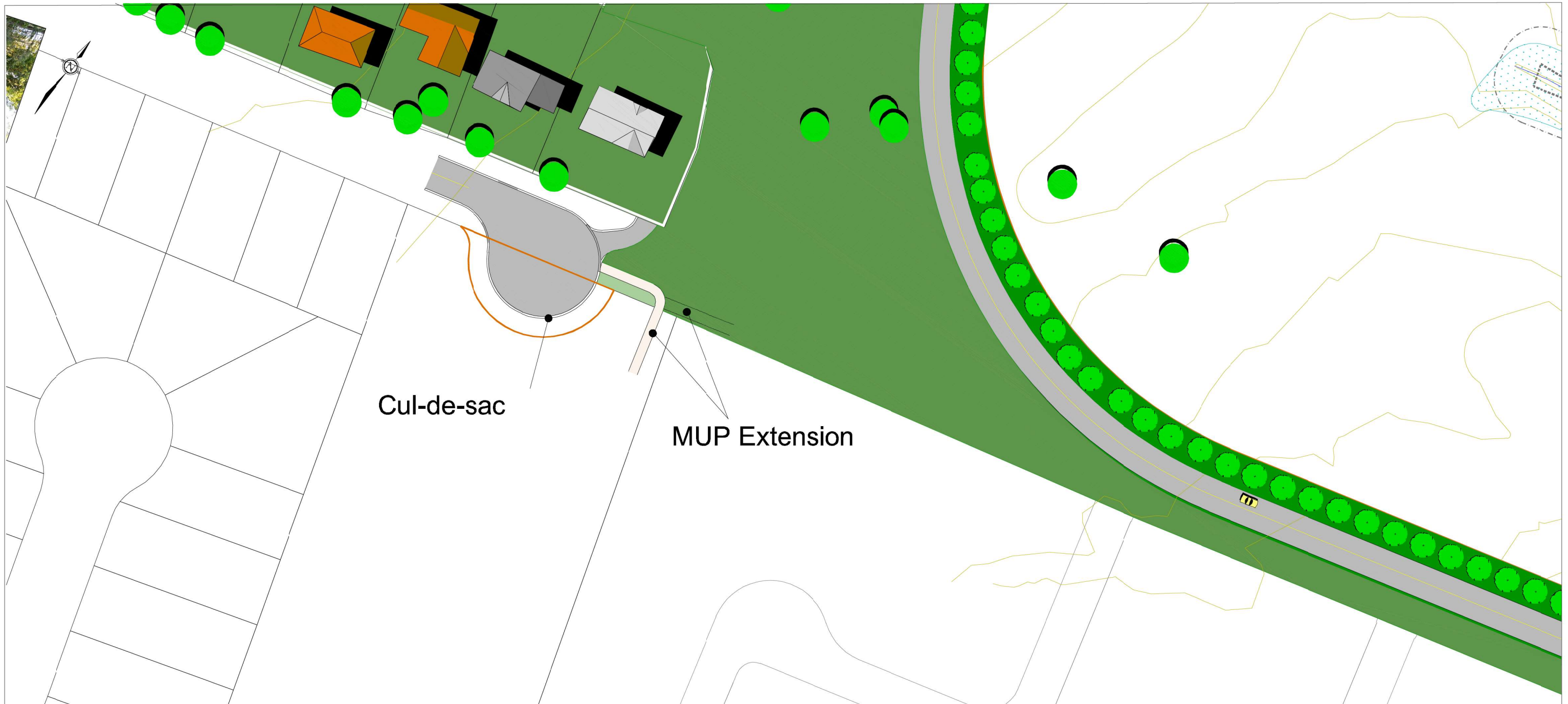
Project Number: 17-033  
 October, 2019  
 1:1000



**NOTE:**

\* **Photo Credits**  
 Paris Museum  
 Historical Society and  
 Mr. James Graber





**Legend:**  Property Acquisition  Pavement  Concrete ● Landscaping  Impacted Properties  32m ROW

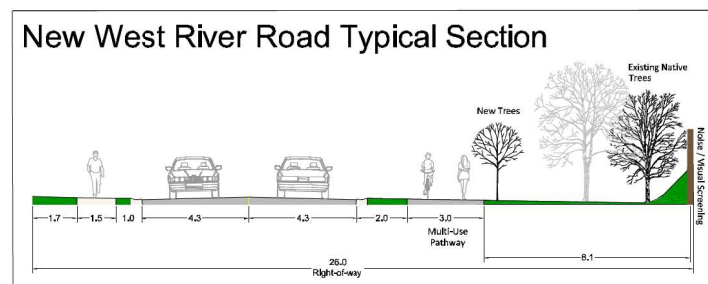
# Recommended Plan - Grand River Street North Corridor

## Plate 8 - West River Road

Project Number: 17-033

October, 2019

1:1000





**Legend:**  Property Acquisition  Pavement  Concrete  Landscaping  Impacted Properties  32m ROW

# Ultimate Recommended Plan - Grand River Street North Corridor

## Plate 9 - Homestead Road to River Lane

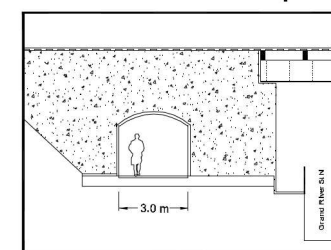
Project Number: 17-033

October, 2019

1:1000

### Section A-A

CN Rail Pedestrian Underpass



### Key Plan



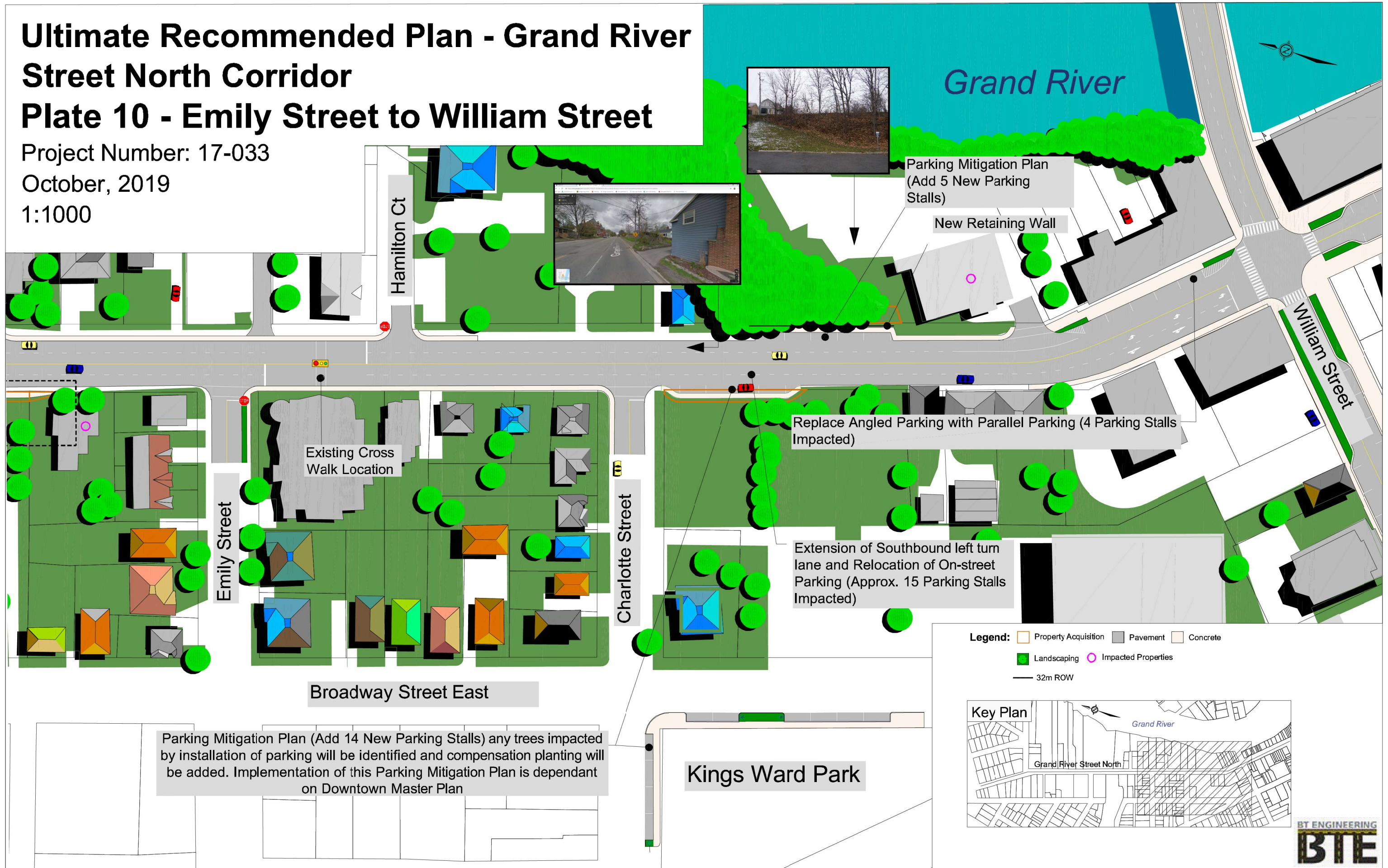
# Ultimate Recommended Plan - Grand River Street North Corridor

## Plate 10 - Emily Street to William Street

Project Number: 17-033

October, 2019

1:1000



Grand River

Parking Mitigation Plan  
(Add 5 New Parking Stalls)

New Retaining Wall

Replace Angled Parking with Parallel Parking (4 Parking Stalls Impacted)

Extension of Southbound left turn lane and Relocation of On-street Parking (Approx. 15 Parking Stalls Impacted)

Existing Cross Walk Location

Kings Ward Park

Parking Mitigation Plan (Add 14 New Parking Stalls) any trees impacted by installation of parking will be identified and compensation planting will be added. Implementation of this Parking Mitigation Plan is dependant on Downtown Master Plan

- Legend:**
- Property Acquisition
  - Pavement
  - Concrete
  - Landscaping
  - Impacted Properties
  - 32m ROW

